

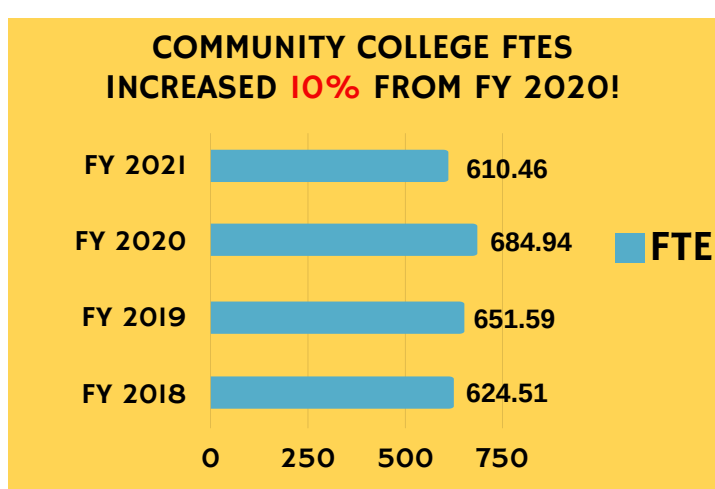
MISSION

The Laurel College Center is a regional higher education center that provides the community and the region with quality learning experiences that can lead to degree attainment, workforce development and/or personal enrichment.

OUR PARTNERS



Institution	Enrollments	FTEs
Community Colleges	5288	571.5
4-year Institutions	204	27.07
Continuing Education	302	11.89
Total	5794	610.46



Degrees Offered At The Center



Associates
 General Studies
 Business Administration
 Psychology
 Social Sciences



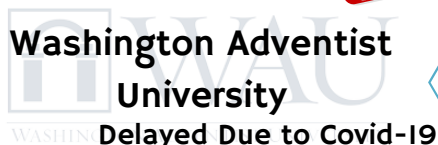
Bachelors
 Psychology



Bachelors
 Criminal Justice
 Information Systems Mgt
 Cybersecurity



Bachelors
 Business Administration



COMING SOON

Bachelors
 General Studies w/ a concentration in Communications or Health Care Administration

Delayed Due to Covid-19



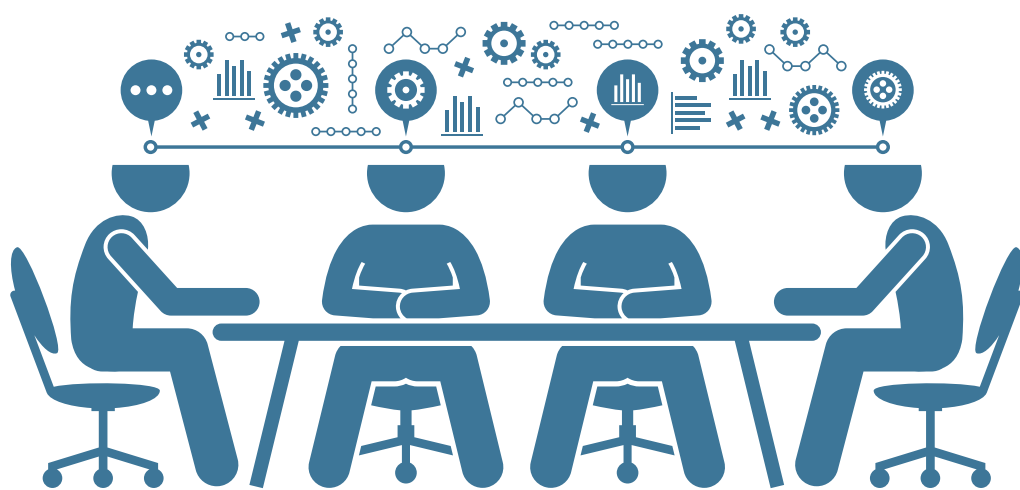
LAUREL COLLEGE CENTER

A Community of Colleges & Universities

LCC By the Numbers

- **Twenty-four standard classrooms**
- **Eleven instructional computer labs**
- **Two science labs including one for biology and one for microbiology**
- **An open computer lab**
- **Virtual library**
- **NEW! – Student Game Room**
- **Two student lounges**
- **Two faculty workrooms**
- **Twelve administrative offices**

The Laurel College Center is conveniently located in the heart of Laurel, close to I-95 and the Baltimore Washington Parkway. The Laurel College Center totals 48,871 square feet, including thirty-seven classrooms as well as administrative offices located on five floors of a modern ten-story professional building.



SERVICES

One-Stop-Shop

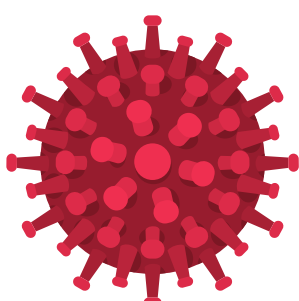
Admissions
Registration
Bill Payment

Day & Evening
Security
Free Parking

Placement
Testing &
Tutoring

Academic &
Financial Aid
advising

Open Computer
Lab
Virtual Library
Wifi



COVID UPDATE: All Spring '20 courses were switched to virtual formats as of March 23, 2020. LCC classes remained online/scheduled remote for Summer and Fall 2020 & Spring and Summer 2021 semesters. In-person classes returned at LCC in Fall 2021, while still offering online/remote options. Staff returned to campus in May 2021.