



# **RETENTION AND GRADUATION RATES AT MARYLAND FOUR-YEAR INSTITUTIONS**

**November 2014**

# **Maryland Higher Education Commission**

Anwer Hasan, Chairman

Sandra L. Jimenez, Vice-Chair

Brandon G. Bell

Vivian S. Boyd

Catherine M. Cano, Student Commissioner

Joseph DeMattos, Jr.

Ian MacFarlane

Joel Packer

Edith J. Patterson

Gregory A. Schuckman

Rizwan A. Siddiqi

John W. Yaeger

**Catherine M. Shultz**  
**Acting Secretary of Higher Education**

**Martin O'Malley**  
**Governor**

**Anthony G. Brown**  
**Lt. Governor**

## Table of Contents

<b>I. Introduction</b> .....	1
<b>II. Analysis and Discussion</b> .....	3
Maryland Four-Year Public Institutions	
Six-Year Graduation Rates	
By Race and Ethnicity	
By Gender	
Second-Year Retention Rates	
By Race and Ethnicity	
By Gender	
Maryland State-Aided Independent Institutions	
Six-Year Graduation Rates	
Second-Year Retention Rates	
<b>III. Conclusion</b> .....	11
<b>IV. Tables</b>	
Statewide Tables .....	12
Institutional Tables.....	24
All Students	
All Students by Racial and Ethnic Background	
African American Students	
White Students	
Asian Students	
Hispanic Students	
All Students by Gender	
Male Students	
Female Students	
State-Aided Independent Institutions.....	88

## INTRODUCTION

This report presents data on the retention and graduation rates of first-time, full-time undergraduate students who initially enroll at public four-year colleges and universities in the state of Maryland. The graduation trends in this report include undergraduate students who persisted at and graduated from the campus at which they initially enrolled, as well as those who transferred to and then graduated from any of the four-year colleges or universities, including independent institutions, in Maryland. This analysis features six-year graduation rates, or the percentage of students who receive a bachelor's degree within six years of initial enrollment. The four- and five-year graduation rates are included in the tables beginning on page 12. The retention rates in this report include the percentage of first-time, full-time students who remained enrolled at the same institution in subsequent fall semesters. This analysis also includes second-year retention rates, or those students who enroll for a second consecutive fall semester.

The new data presented in this report are for the 2007 through 2012 entering cohorts of undergraduate students enrolled in Maryland's public four-year institutions. These data are disaggregated by gender, racial/ethnic group, and institution. Cohorts are defined by year of entry (first-time enrollment). The six-year graduation rate for the 2007 cohort measures the number of students who entered Maryland higher education in fall 2007 and graduated before fall 2013. The second-year retention rate of the 2012 cohort measures the number of Maryland students who enrolled in higher education for the first time in fall 2012 and were still enrolled in fall 2013.

The first section of this report presents data on undergraduate students who entered Maryland's public four-year colleges and universities<sup>1</sup> from 1987 to 2012. For the first time, this report includes six-year graduation rate data for the University of Baltimore (UB). Before 2007, UB did not enroll first-time undergraduate students. The second section of this report presents the 2012 cohort retention rates and 2007 cohort graduation rates for Maryland residents who entered one of the state's independent postsecondary institutions. All data in this report comes from MHEC Enrollment and Degree Information Systems, unless otherwise noted.

Figures for the entering class of 1996 and beyond include changes resulting from the development of the IPEDS Federal Graduation Rate Survey (GRS)<sup>2</sup>. The data collection and reporting requirements in this analysis are the following:

- The method used to match student enrollment and degree attainment is based on the federal GRS procedures and on the recommendations of an inter-segmental workgroup.

<sup>1</sup> Data for the University of Maryland, Baltimore and the University of Maryland University College have been excluded. The University of Maryland, Baltimore is excluded because it does not enroll first-time students. The University of Maryland University College is excluded due to its mission to serve the adult, part-time population.

<sup>2</sup> In 1990, Congress enacted the Student Right-to-Know Act (SRTK) which requires colleges and universities to disclose the rate at which students complete academic programs at postsecondary education institutions. The GRS is the federal data collection instrument for four-year postsecondary institutions.

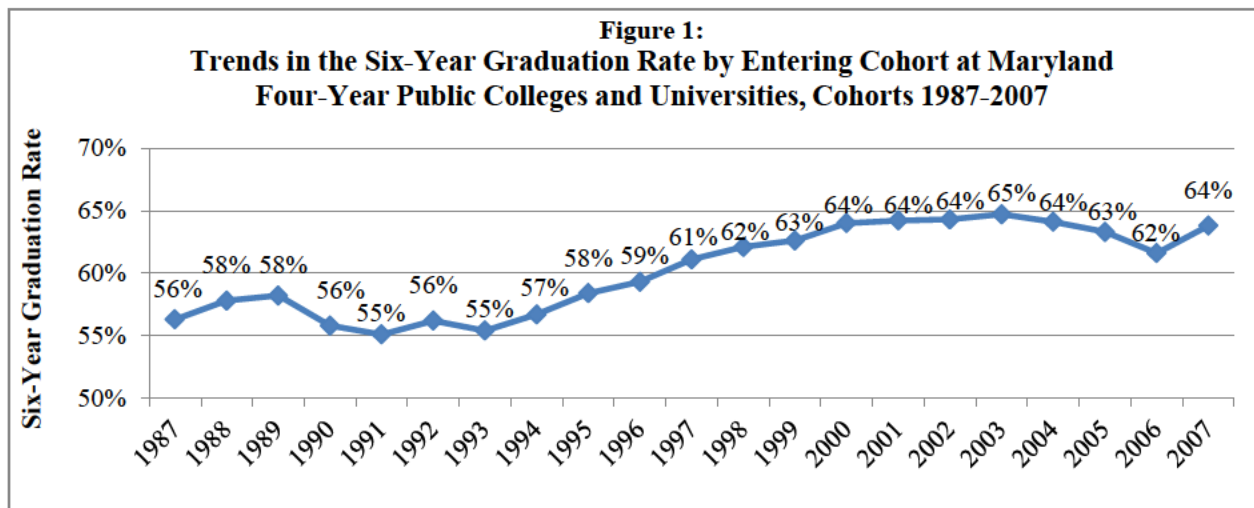
- Prior to the 1996 cohort, students who enrolled simultaneously at multiple institutions were reported at only one campus on a randomly selected basis. Currently, a cross-enrolled student is included at every institution at which they are enrolled, provided their total course load is equivalent to full-time status.
- When institutions report a new identification number for a student, the student is tracked on the basis of the *new* number. In earlier cohorts, students with new identification numbers were treated as no longer enrolled or dropped from an institution. This process mostly affects institutions enrolling a large number of international students, who often are assigned “dummy” identification numbers upon initial enrollment.
- Information on cohorts from years prior to 1996 remains unchanged.

## ANALYSIS AND DISCUSSION

### Maryland Four-Year Public Institutions

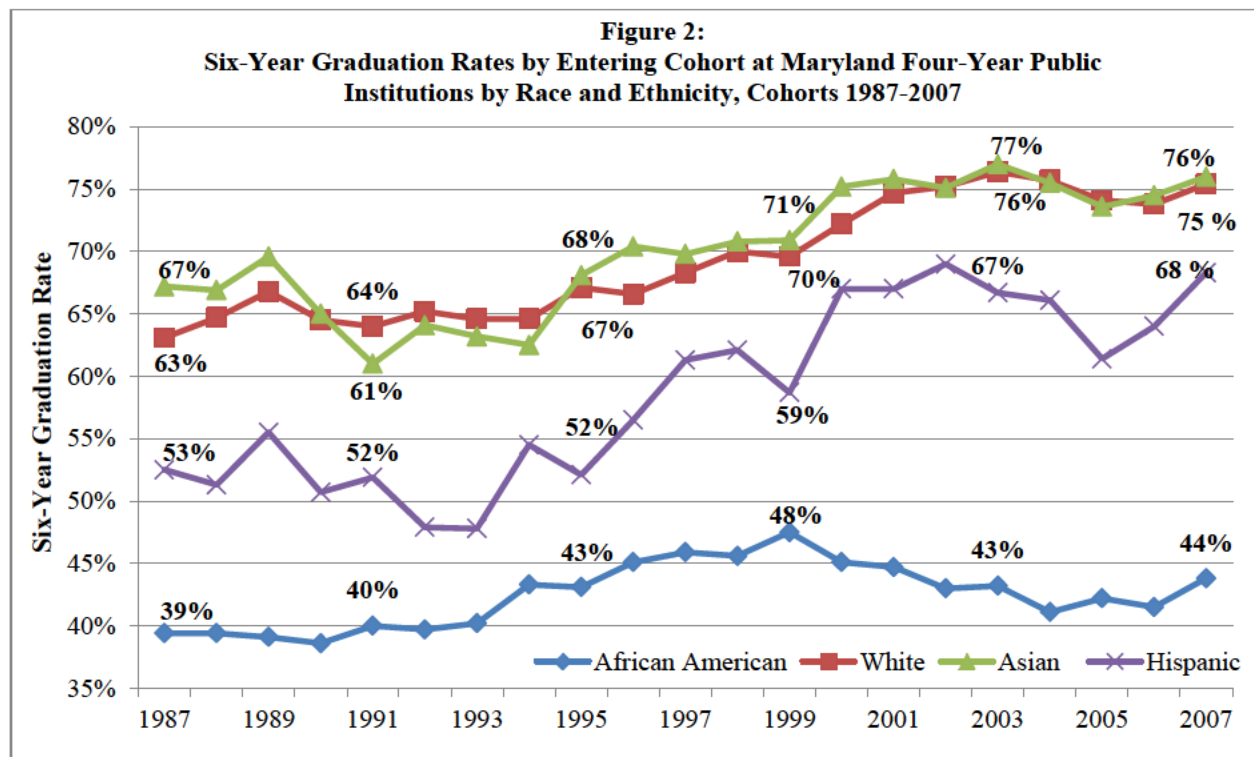
#### *Six-Year Graduation Rates for All Students*

- The six-year graduation rate for first-time, full-time students rose from 61.6% for the 2006 cohort to 63.8% for the 2007 cohort (see Figure 1). This is the first increase after three consecutive years of decreases although this rate is still below the 2003 peak rate of 64.7%.
- Six-year graduation rates increased at seven out of eleven four-year public institutions in Maryland including: Bowie State University, Frostburg State University, the University of Maryland Baltimore County, the University of Maryland College Park, the University of Maryland Eastern Shore, Morgan State University, and St. Mary's College of Maryland. The rate for Salisbury University remained constant. The University of Maryland University College and the University of Maryland Baltimore were excluded from this analysis.
- Several institutions saw notable increases in the six-year graduation rates of their students. The University of Maryland College Park and the University of Maryland Baltimore County had their highest six-year graduation rates in 20 years at 84.4% and 68.8% respectively. Additionally, the 2007 cohort at Morgan State University had the highest graduation rate in more than five years with a rate of 34.9%.



### *Graduation Rates by Race and Ethnicity*

- The six-year graduation rate for African American students increased to 43.8% for the 2007 cohort from 41.5% for the prior cohort (see Figure 2 on the next page).
- Graduation rates for students at the University of Maryland College Park (77.7%) and the University of Maryland Baltimore County (67.5%) were the highest they have been in 15 years.
- St. Mary's College of Maryland (76.7%), Towson University (62.1%), and Salisbury University (62.0%) had the highest six-year graduation rates among African American students in Maryland for the 2007 cohort.
- The graduation rates for African Americans attending Maryland's historically black institutions (HBIs) are as follows: 37.7% at the University of Maryland Eastern Shore, 37.7% at Bowie State University, 33.5% at Morgan State University, and 14.8% at Coppin State University.
- Among all races and ethnicities, the six-year graduation rate increased the most for Hispanic students. The rate increased by 4.3 percentage points to 68.3% for the 2007 cohort, up from 64.0% in the 2006 cohort.
- Graduation rates for every race and ethnicity are higher than they were 20 years ago, despite recent decreases in the last five years. Hispanic students have achieved the largest increase in graduation rates over the past 20 years (15.8 percentage points).
- Across all racial and ethnic groups, statewide graduation rates were highest for Asian (76.0%) and white (75.4%) students. The rates for both populations increased from last year, as the rate for Asian students grew from 74.5%, and the rate for white students rose from 73.8%.

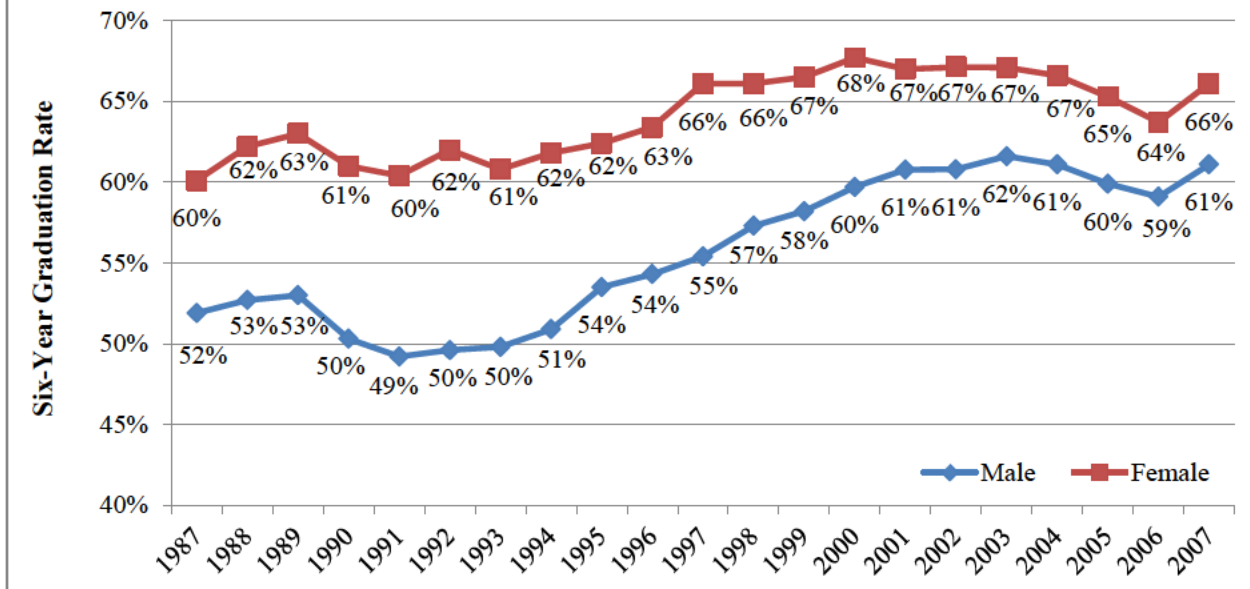


### *Graduation Rates by Gender*

- Consistent with the national trend, male graduation rates trail those of their female peers. Nationally, the six-year graduation rate for male students at public institutions is five points behind that for women. In Maryland the graduation rate for female undergraduates attending public four-year universities in Maryland was 66.1% and exceeded the 61.1% graduation rate of their male peers by five percentage points (see Figure 3). However, the Maryland rate has steadily dropped over ten years from a 10.7 percentage point difference in 1997.
- Although there is a gap between male and female graduation rates, they are growing at similar rates. For both men and women, the rates for the 2007 cohort were approximately two percentage points higher than those for the previous cohort and are the highest they have been in three years.
- The graduation rate for female students rose 2.4 percentage points from last year's rate of 63.7%, and is only 1.6 percentage points away from the highest female retention rate for Maryland (67.7%). Similarly, the graduation rate for male students increased by 2.0 percentage points from last year (59.1%) and is less than the one percentage than the highest male retention rate (61.6%).



**Figure 3:  
Six-Year Graduation Rates by Entering Cohort at Maryland Four-Year  
Public Institutions by Gender, Cohorts 1987-2007**

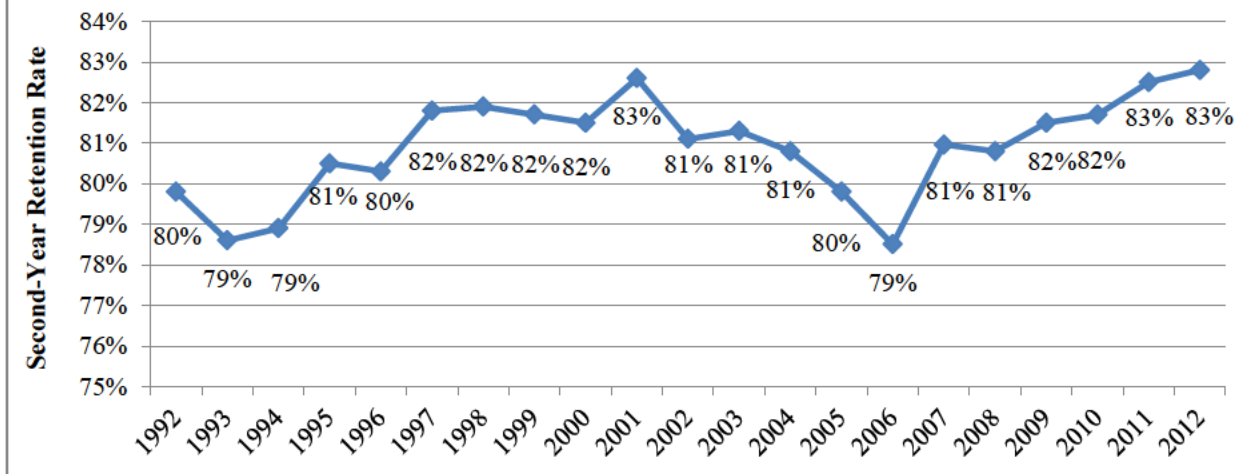


- The gap between male and female students in Maryland has gradually narrowed since the 1990s. Over the past ten years, the gender disparity has fallen from 10.7 percentage points to 5.0 percentage points. While the six-year graduation rate for males has improved over the last ten years (from 55.4%), this growth has begun to taper off in the last five years. In contrast, the graduation rates for female students remained stable and mirror those of 1997 at 66.1%.
- The gender gap is largest for African American and Hispanic students. The six-year graduation rate for African American male students remained relatively constant at 36.5% compared to last year's rate of 36.6%. By contrast, the 2007 graduation rate for African American female students grew to 48.8% from 44.5%, the highest rate in five years. The six-year graduation rate for Hispanic females rose to 73.7% from 68.5% for the 2006 cohort. The rate for Hispanic males also increased, to 62.2% from 57.9%. Large fluctuations in this rate may be due to a relatively small student population. The 2007 cohort included 269 Hispanic females and 241 Hispanic males, compared to 2,501 African American females and 1,597 African American males.

#### *Second-Year Retention Rates for All Students*

- The second-year retention rate for first-time, full-time undergraduates at public institutions in Maryland was 82.8% for the 2012 cohort, which was a slight increase from 82.5% for the previous cohort. This is the highest rate in the last 20 years (see Figure 4).

**Figure 4:  
Second-Year Retention Rates by Entering Cohort at Maryland Four-Year  
Public Colleges and Universities, Cohorts 1992-2012**

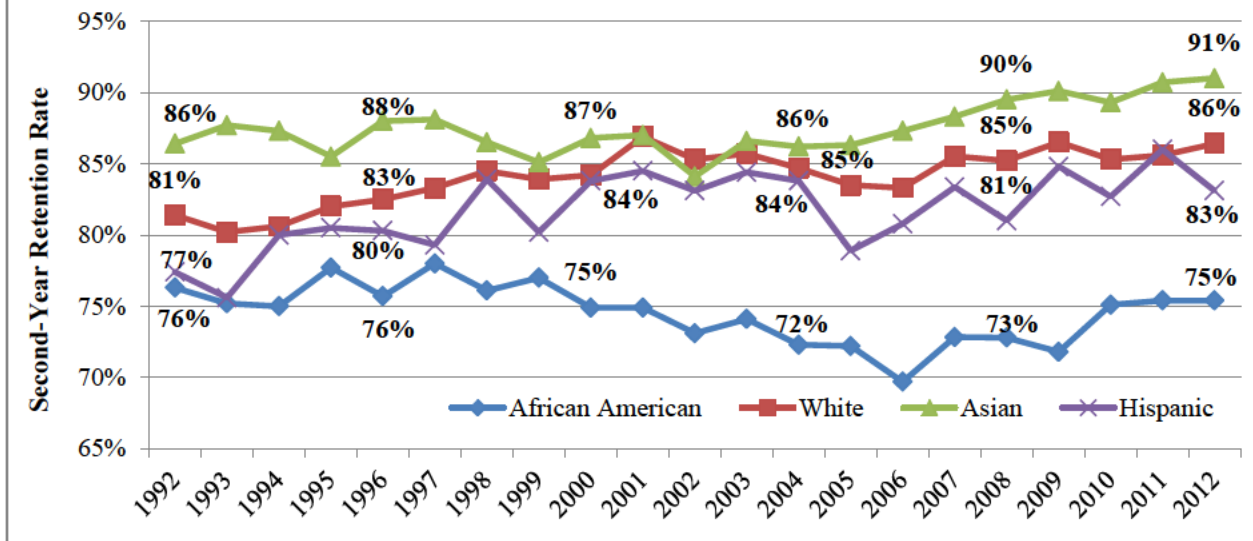


- Six of the eleven four-year public institutions saw increases in the second-year retention rates of their students. The University of Maryland College Park had the highest retention rate for the 2012 cohort at 94.4% (up from 93.7% in 2011). This is on par with their performance in 2009 with a retention rate of 94.8%, their highest on record. In addition to UMCP, the following public four-year institutions experienced gains in their second-year retention rates: Frostburg State University, Towson University, University of Maryland Baltimore County, Morgan State University, and St. Mary's College of Maryland.
- Several institutions have made considerable strides in their second-year retention rates. For instance, Frostburg State University had the highest retention rate for their institution in 20 years at 76.8%. The 2012 cohort at Towson University also saw considerable growth in its retention rate at 86.0% (the highest rate in over ten years). Furthermore, rates at both the University of Maryland Baltimore County and St. Mary's College of Maryland were the highest rates for their institutions in four years (at 85.3% and 90.0%).

#### *Second-Year Retention Rates by Race and Ethnicity*

- For the 2012 cohort, Asian students achieved the highest second-year retention rate (91.0%) among all racial and ethnic groups (see Figure 5). For the second consecutive year, Asian students achieved the highest retention rate on record for any racial or ethnic group dating back to 1978.
- The retention rate for White students increased to 86.4% from 85.6% and that of Asian students increased to 91.0% from 90.7%.

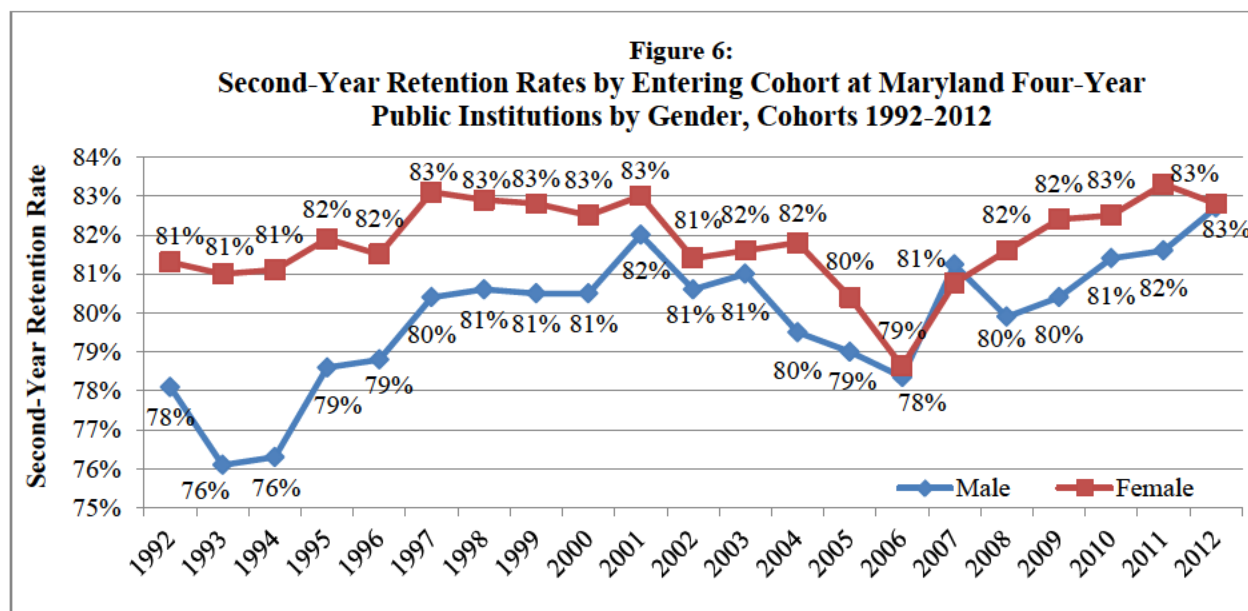
**Figure 5:  
Second-Year Retention Rates by Entering Cohort at Maryland Four-Year  
Public Institutions by Race and Ethnicity, Cohorts 1992-2012**



- The second-year retention rate for African American students in the 2012 cohort did not change from the previous cohort (75.4%). This retention rate is the highest in over ten years for African American students.
- The highest retention rates for African American students were at the University of Maryland College Park (93.0%), the University of Maryland Baltimore County (91.8%), Towson University (91.1%), Salisbury University (84.2%) and Frostburg State University (79.8%). Of particular note, the 2012 African American student cohort at Frostburg State University had its highest second-year retention rate on record, and the University of Maryland Baltimore County saw its highest rate for African American students in over ten years.
- The 2012 retention rates for African Americans attending Maryland’s HBI’s are as follows: 72.1% at Morgan State University, 70.0% at Bowie State University, 68.0% at the University of Maryland Eastern Shore, and 59.1% at Coppin State University.

*Second-Year Retention Rates by Gender*

- With few exceptions, female students have consistently attained higher second-year retention rates than their male peers. However, for the 2012 cohort, this gap was minuscule as the female retention rate went from 83.8% in 2011 to 82.8% in 2012 and male retention rate went from 81.6% in 2011 to 82.7% in 2012 (see Figure 6).



- African American females continued to achieve a higher second-year retention rate than African American males. The retention rate for African American female students in the 2012 cohort was 76.4%, compared to 73.7% for male students. This 2.7 percentage point gap is a decrease from the previous year's gap of 4.3 percentage points.

### Maryland State-Aided Independent Institutions

The final section of this report examines the most current six-year graduation rate and second-year retention rate data for Maryland residents who began their academic careers at one of the state's independent institutions. Most of these institutions began providing MHEC with student-level information about the enrollment and degree completion patterns of Maryland residents in the fall of 2004. The overall graduation and retention rates at the independent institutions do not permit direct comparisons between these two institutional types because they measure different groups. While the rates for public institutions include all first-time, full-time undergraduate students, the rates for independent institutions include only students who are Maryland residents. Moreover, students who enroll initially at independent institutions cannot be followed from one institution to another.

#### *Six-Year Graduation Rates*

- The six-year graduation rate for the 2007 cohort of first-time, full-time Maryland residents at State-aided independent institutions was 65.4%, which is a decrease from 69.0% for the 2006 cohort.
- The independent campuses with the highest six-year graduation rates for Maryland residents were Loyola University Maryland (83.8%), McDaniel College (82.7%), Mount

St. Mary's University (78.8%), Johns Hopkins University (77.0%), Washington College (76.9%), Hood College (74.9%), and the Maryland Institute College of Art (72.4%).

- The six-year graduation rate for African American students in the 2007 cohort decreased from 44.1% to 41.0%. The six-year graduation rate also decreased for White students in the 2007 cohort from 75.1% to 74.4%.
- Consistent with the statewide trend at public institutions, female students at independent institutions had a higher six-year graduation rate than their male peers (68.6% compared to 59.5%).

#### *Second-Year Retention Rates*

- The 2012 second-year retention rate for Maryland residents attending Maryland independent institutions increased by 5.6 percentage points, to 78.8% from 73.2% in 2011.
- The second-year retention rate for both African American and White students increased for the 2012 cohort. The rate for African American students saw considerable growth from 61.3% to 71.3%, whereas the rate for white students saw a smaller rise from 79.4% to 82.5%.
- Similar to the statewide trends at public institutions, the second year retention rate at independent State-aided institutions showed only a slight gap between male and female students for 2012. For this cohort, female students had a retention rate of 79.0% compared to their male peers who had a retention rate of 78.5%.

## CONCLUSION

The six-year graduation rates for Maryland public institutions have significantly improved over the last three years. The rate for the 2007 entering cohort of students reached a three year high of 63.8%. However, this graduation rate has still not reached the all-time high of 64.7% in 2003.

Statewide, the six-year graduation rate has increased by 8.7 percentage points over the past twenty years. However, these gains have been distributed unevenly among groups. White and Asian students had the largest increases over this time. Since the 1987 entering cohort, the graduation rate for white students has increased 12.3 percentage points, to 75.4% from 63.1%. Similarly, Asian students have seen an increase in graduation rates to 76.0% from 67.2% (8.8 percentage points). The African American graduation rate has increased over the last five years to 43.8% for the 2007 cohort from 39.4% for the 1987 cohort (4.4 percentage points). Most notably, graduation rates for Hispanic students have seen the largest growth over the last 20 years with a growth of 15.8 percentage points, to 68.3% from 52.5%.

For the third year in a row, both female and male students experienced slight decreases in the six-year graduation rates. While the graduation rate gender gap has gradually closed over the past decade, women continue to lead in both college enrollments and graduation rates. Among students first enrolling in 2007, 66.1% of females graduated within six years while only 61.1% of males did the same. However, second year retention rates are almost equal, as the female retention rate for the 2012 entering cohort is 82.8% compared to the male rate of 82.7%.

At 82.8%, the statewide second-year retention rate was the highest it has ever been, exceeding the previous highest rate of 82.6% for the 2001 cohort. Sustained retention rate increases should result in higher graduation rates over the next several years. Although racial and gender gaps still persist, long-term trends suggest that Maryland's higher education system has made strides to close these gaps and to improve the rate at which students progress through college.

The 2012 cohort (13,566 students) is the smallest since 2003. After reaching a peak of 15,100 full-time entering students in 2008, cohort sizes have continued to shrink each year. A smaller cohort size presents the State with both opportunities and challenges. As first-time, full-time cohorts shrink institutions should improve their efforts to retain these students, as well as increasing enrollment and retention of part-time students, in order to continue growing in size. Improved retention rates should lead to improved graduation rates, and greater efforts to support part-time students may improve their completion rates as well. Moreover, the success of Maryland's 2025 degree completion goal is dependent on both increased enrollment and higher graduation rates.

# **STATEWIDE TRENDS IN RETENTION AND GRADUATION RATES**

**Trends in Retention and Graduation Rates**  
**MARYLAND PUBLIC COLLEGES AND UNIVERSITIES**  
All Students

Percent enrolled at original campus or graduated from **any** campus after:

Cohort	N	One Year	Two Years	Three Years	Four Years		Five Years		Six Years	
					Enrolled	Graduated	Enrolled	Graduated	Enrolled	Graduated
1987	10,563	77.7	65.7	60.8	33.2	23.4	10.0	48.2	4.0	56.3
1988	10,349	78.7	67.1	62.1	33.3	24.8	9.8	50.1	4.0	57.8
1989	9,313	80.5	68.7	63.4	34.5	24.5	9.8	50.4	4.5	58.2
1990	9,329	79.0	66.8	61.5	33.4	23.6	10.7	47.7	4.6	55.8
1991	9,272	77.8	66.2	61.3	32.6	24.3	9.7	47.7	3.7	55.1
1992	9,441	79.8	67.2	61.9	32.5	25.2	9.5	48.9	3.8	56.2
1993	9,797	78.6	66.3	61.2	31.8	25.2	9.2	48.4	3.7	55.4
1994	10,078	78.9	66.6	61.7	31.2	26.1	8.5	49.6	3.4	56.7
1995	10,717	80.5	68.1	63.6	29.6	29.9	8.8	51.6	3.7	58.4
1996	11,066	80.3	69.7	64.7	30.0	30.4	8.4	53.0	3.5	59.3
1997	11,612	81.8	70.7	66.4	29.3	33.0	8.2	54.8	3.3	61.1
1998	12,154	81.9	70.7	66.7	30.4	32.5	8.1	55.4	3.3	62.1
1999	12,037	81.7	71.8	67.8	29.1	34.2	7.9	56.4	3.1	62.6
2000	12,319	81.5	71.9	68.0	27.8	35.9	7.4	57.9	2.8	64.0
2001	13,454	82.6	72.0	68.2	25.7	37.9	6.3	58.5	2.6	64.2
2002	13,165	81.1	70.9	67.5	25.3	38.3	6.7	58.8	2.7	64.3
2003	13,250	81.3	71.3	67.9	25.0	39.0	6.6	59.2	2.9	64.7
2004	13,610	80.8	70.8	66.6	25.3	38.7	6.9	58.5	3.0	64.1
2005	13,788	79.8	69.4	66.1	22.8	40.2	6.8	58.2	3.2	63.3
2006	14,492	78.5	68.7	65.5	24.8	37.4	7.2	55.8	2.9	61.6
2007	14,799	81.0	70.5	67.5	25.0	38.9	6.9	58.3	2.9	63.8
2008	15,100	80.8	70.9	66.8	25.2	38.4	6.9	58.3		
2009	14,666	81.5	72.1	68.0	24.7	40.6				
2010	14,262	81.7	72.1	67.8						
2011	13,735	82.5	73.4							
2012	13,566	82.8								

\* 2010 Cohort sizes have been updated to include UMUC in the total.

Source: MHEC Enrollment and Degree Information Systems



**Trends in Retention and Graduation Rates**  
**MARYLAND PUBLIC COLLEGES AND UNIVERSITIES**  
**Male Students**

Percent enrolled at original campus or graduated from **any** campus after:

Cohort	N	One Year	Two Years	Three Years	Four Years		Five Years		Six Years	
					Enrolled	Graduated	Enrolled	Graduated	Enrolled	Graduated
1987	4,937	75.8	63.5	59.2	38.3	16.4	13.3	41.6	5.1	51.9
1988	4,832	77.2	65.4	60.6	38.4	16.9	12.2	43.5	5.0	52.7
1989	4,402	79.3	67.8	62.1	39.9	17.1	12.4	43.3	5.3	53.0
1990	4,451	77.3	64.9	59.7	37.0	17.2	12.7	41.7	5.4	50.3
1991	4,370	75.0	62.9	57.9	36.7	16.3	12.0	40.4	4.2	49.2
1992	4,355	78.1	64.7	59.1	35.9	17.5	12.1	40.8	4.6	49.6
1993	4,693	76.1	64.0	58.3	35.3	18.4	11.0	41.8	4.3	49.8
1994	4,666	76.3	64.5	58.8	35.0	18.6	10.1	42.7	4.0	50.9
1995	4,777	78.6	66.2	61.6	34.2	22.3	10.3	45.8	4.6	53.5
1996	5,008	78.8	67.4	62.4	34.8	22.8	10.6	46.7	4.3	54.3
1997	5,360	80.4	69.2	64.1	33.7	25.5	10.0	48.1	4.0	55.4
1998	5,488	80.6	69.5	64.8	33.7	26.4	9.5	49.8	4.0	57.3
1999	5,612	80.5	70.3	65.6	32.5	27.4	9.4	50.8	3.6	58.2
2000	5,648	80.5	70.9	66.4	32.4	28.7	8.9	52.5	3.5	59.7
2001	6,044	82.0	71.5	66.9	29.7	31.2	7.5	54.0	3.1	60.8
2002	5,864	80.6	70.6	66.5	29.4	32.2	8.3	54.2	3.5	60.8
2003	5,899	81.0	70.5	66.7	28.9	32.7	7.8	55.4	3.4	61.6
2004	6,205	79.5	70.0	65.5	28.8	32.7	8.1	54.5	3.5	61.1
2005	6,198	79.0	68.4	64.9	25.8	34.9	8.0	54.3	3.8	59.9
2006	6,486	78.4	68.5	65.0	28.1	32.5	8.9	52.1	3.6	59.1
2007	6,668	81.2	70.3	67.0	28.7	33.4	8.4	54.4	3.6	61.1
2008	6,880	79.9	70.5	65.8	27.8	33.5	7.8	54.7		
2009	6,707	80.4	70.9	66.7	27.5	35.1				
2010	6,529	81.4	70.0	66.9						
2011	6,289	81.6	72.2							
2012	6,189	82.7								

\* 2010 Cohort sizes have been updated to include UMUC in the total.

Source: MHEC Enrollment and Degree Information Systems

**Trends in Retention and Graduation Rates**  
**MARYLAND PUBLIC COLLEGES AND UNIVERSITIES**  
**Female Students**

Percent enrolled at original campus or graduated from **any** campus after:

Cohort	N	One Year	Two Years	Three Years	Four Years		Five Years		Six Years	
					Enrolled	Graduated	Enrolled	Graduated	Enrolled	Graduated
1987	5,626	79.3	67.6	62.2	28.7	29.4	7.2	54.0	3.0	60.1
1988	5,516	80.0	68.7	63.5	28.8	31.7	7.7	55.8	3.0	62.2
1989	4,911	81.6	69.6	64.7	29.7	31.2	7.6	56.7	3.8	63.0
1990	4,878	80.6	68.6	63.2	30.1	29.5	8.8	53.2	3.8	61.0
1991	4,902	80.3	69.1	64.3	29.0	31.5	7.7	54.3	3.1	60.4
1992	5,086	81.3	69.3	64.4	29.5	31.9	7.2	55.9	3.1	62.0
1993	5,104	81.0	68.4	63.8	28.7	31.4	7.6	54.5	3.1	60.8
1994	5,412	81.1	68.5	64.1	27.9	33.3	7.2	55.6	3.0	61.8
1995	5,940	81.9	69.5	65.2	25.9	36.0	7.5	56.4	3.0	62.4
1996	6,058	81.5	71.5	66.6	26.0	36.6	6.5	58.1	2.8	63.4
1997	6,252	83.1	72.0	68.5	25.5	39.5	6.6	60.6	2.6	66.1
1998	6,666	82.9	71.7	68.3	27.8	37.4	7.0	59.8	2.8	66.1
1999	6,425	82.8	73.2	69.7	26.1	40.2	6.5	61.3	2.7	66.5
2000	6,671	82.5	72.7	69.2	23.9	41.9	6.1	62.5	2.3	67.7
2001	7,410	83.0	72.4	69.1	22.4	43.4	5.4	62.3	2.2	67.0
2002	7,301	81.4	71.1	68.2	22.0	43.3	5.4	62.5	2.2	67.1
2003	7,346	81.6	71.9	68.8	21.9	44.0	5.5	62.2	2.5	67.1
2004	7,396	81.8	71.5	67.6	22.3	43.8	5.9	61.8	2.7	66.6
2005	7,563	80.4	70.3	67.1	20.4	44.6	5.8	61.5	2.7	65.3
2006	8,006	78.6	68.8	66.0	22.2	41.3	5.9	58.9	2.4	63.7
2007	8,128	80.8	70.7	67.9	22.1	43.4	5.6	61.6	2.3	66.1
2008	8,217	81.6	71.3	67.7	23.1	42.5	6.1	61.3		
2009	7,958	82.4	73.2	69.0	22.4	45.3				
2010	7,733	82.5	71.4	68.6						
2011	7,446	83.3	74.4							
2012	7,377	82.8								

\* 2010 Cohort sizes have been updated to include UMUC in the total.

Source: MHEC Enrollment and Degree Information Systems

**Trends in Retention and Graduation Rates**  
**MARYLAND PUBLIC COLLEGES AND UNIVERSITIES**  
**African American Students**

Percent enrolled at original campus or graduated from **any** campus after:

Cohort	N	One Year	Two Years	Three Years	Four Years		Five Years		Six Years	
					Enrolled	Graduated	Enrolled	Graduated	Enrolled	Graduated
1987	2,492	68.8	54.0	48.4	30.3	12.3	12.8	28.5	5.9	39.4
1988	2,701	72.3	58.4	50.9	33.1	13.0	12.7	31.4	5.3	39.4
1989	2,738	74.5	59.3	51.6	34.4	12.0	12.0	31.9	7.2	39.1
1990	2,800	73.6	59.1	52.1	34.1	11.5	14.9	29.9	7.1	38.6
1991	2,979	73.2	59.3	53.1	32.9	14.4	12.2	32.7	5.0	40.0
1992	2,958	76.3	59.8	52.4	32.9	14.5	12.3	32.6	5.7	39.7
1993	3,244	75.2	60.0	52.5	33.1	14.9	12.9	33.0	5.5	40.2
1994	3,293	75.0	60.9	53.5	31.9	16.4	11.1	35.1	4.8	43.3
1995	3,523	77.7	61.1	54.2	31.3	17.3	12.4	35.4	5.2	43.1
1996	3,428	75.7	63.0	55.6	32.4	18.2	12.1	37.3	5.5	45.1
1997	3,450	78.0	63.8	56.8	32.9	19.1	12.1	37.7	5.2	45.9
1998	3,572	76.1	61.3	55.4	32.7	17.2	11.6	37.1	5.3	45.6
1999	3,386	77.0	64.8	58.3	32.6	20.5	12.4	40.1	5.3	47.5
2000	3,426	74.9	70.0	54.9	31.1	18.2	11.6	37.4	4.8	45.1
2001	4,092	74.9	60.7	54.3	29.0	20.2	10.2	37.9	4.9	44.7
2002	3,975	73.1	59.7	53.6	29.4	18.7	10.9	36.3	4.7	43.0
2003	4,317	74.1	60.7	53.9	30.2	18.6	10.5	36.4	5.1	43.2
2004	4,272	72.3	58.0	51.2	29.9	17.7	11.9	33.5	5.6	41.1
2005	4,419	72.2	56.9	51.6	27.1	19.7	10.9	36.2	5.5	42.2
2006	5,046	69.7	55.9	50.6	29.3	17.1	10.7	34.6	4.7	41.5
2007	4,723	72.8	58.2	53.2	31.5	17.2	11.3	35.9	4.9	43.8
2008	5,163	72.8	58.6	53.2	29.6	18.1	10.8	36.6		
2009	4,743	71.8	58.5	52.9	31.4	17.4				
2010	4,631	75.1	61.2	55.3						
2011	4,300	75.4	62.9							
2012	4,098	75.4								

\* 2010 Cohort sizes have been updated to include UMUC in the total.

\*\* New federal race and ethnicity definitions were introduced in 2010. Figures before and after 2010 may not be directly comparable

Source: MHEC Enrollment and Degree Information Systems

**Trends in Retention and Graduation Rates**  
**MARYLAND PUBLIC COLLEGES AND UNIVERSITIES**  
 White Students

Percent enrolled at original campus or graduated from **any** campus after:

Cohort	N	One Year	Two Years	Three Years	Four Years		Five Years		Six Years	
					Enrolled	Graduated	Enrolled	Graduated	Enrolled	Graduated
1987	7,213	80.5	69.3	64.7	33.2	27.6	8.6	55.2	3.1	63.1
1988	6,812	80.6	70.0	66.1	32.6	29.9	8.0	57.5	3.1	64.7
1989	5,697	83.1	72.5	68.4	33.6	30.9	8.4	58.9	3.2	66.8
1990	5,521	81.8	70.8	66.1	32.3	30.3	8.0	57.0	3.2	64.5
1991	5,198	80.4	69.8	65.6	31.5	30.7	7.4	57.0	2.7	64.0
1992	5,388	81.4	70.7	66.4	30.6	32.2	6.8	58.7	2.6	65.2
1993	5,369	80.2	69.2	65.5	29.7	32.1	6.6	58.1	2.4	64.6
1994	5,505	80.6	69.6	66.2	29.4	33.8	6.6	58.9	2.5	64.6
1995	5,814	82.0	72.0	69.0	27.9	37.7	6.3	61.3	2.5	67.1
1996	6,236	82.5	72.8	68.9	28.2	37.1	6.0	61.5	2.4	66.6
1997	6,543	83.3	73.8	70.8	26.4	40.6	5.7	63.5	2.0	68.3
1998	6,725	84.5	74.7	72.0	27.8	41.0	5.7	64.6	2.1	70.0
1999	6,823	83.9	75.2	72.4	26.9	41.5	5.6	64.3	2.1	69.6
2000	6,896	84.2	76.6	73.8	25.8	44.2	5.3	67.1	1.9	72.2
2001	7,082	86.9	78.1	75.7	23.6	48.4	4.2	70.0	1.5	74.7
2002	7,095	85.3	77.0	74.8	22.5	48.9	4.4	70.5	1.8	75.2
2003	6,520	85.7	77.5	76.0	21.8	50.6	4.3	71.8	1.5	76.4
2004	6,796	84.7	76.9	74.0	21.9	50.4	3.9	71.4	1.5	75.7
2005	6,846	83.5	75.5	73.6	19.6	52.3	4.1	70.8	1.8	74.1
2006	6,824	83.3	76.1	74.5	21.6	50.2	4.8	69.2	1.7	73.8
2007	7,428	85.5	77.6	75.9	20.9	52.3	4.1	71.4	1.6	75.4
2008	7,248	85.2	77.8	74.9	21.5	51.1	4.3	71.1		
2009	7,285	86.5	79.2	76.0	20.4	54.2				
2010	6,785	85.3	78.5	75.0						
2011	6,535	85.6	78.4							
2012	6,364	86.4								

\* 2010 Cohort sizes have been updated to include UMUC in the total.

\*\* New federal race and ethnicity definitions were introduced in 2010. Figures before and after 2010 may not be directly comparable

Source: MHEC Enrollment and Degree Information Systems

**Trends in Retention and Graduation Rates**  
**MARYLAND PUBLIC COLLEGES AND UNIVERSITIES**  
**Asian Students**

Percent enrolled at original campus or graduated from **any** campus after:

Cohort	N	One Year	Two Years	Three Years	Four Years		Five Years		Six Years	
					Enrolled	Graduated	Enrolled	Graduated	Enrolled	Graduated
1987	528	84.3	75.4	70.2	46.0	20.6	15.3	51.5	6.8	67.2
1988	525	87.2	76.2	71.3	43.2	22.7	16.8	54.9	6.7	66.9
1989	550	88.2	78.2	74.4	45.8	22.9	12.4	58.7	5.5	69.6
1990	635	85.0	74.8	70.4	41.9	23.2	15.6	53.0	5.8	65.0
1991	658	84.0	74.9	69.3	41.8	22.6	15.7	48.9	4.9	61.0
1992	713	86.4	76.3	70.9	45.0	22.6	15.7	50.1	4.5	64.1
1993	705	87.7	77.6	72.8	41.7	24.8	12.3	52.6	5.1	63.2
1994	735	87.3	74.3	68.8	43.1	21.5	12.2	51.6	4.9	62.5
1995	725	85.5	76.6	72.7	36.7	31.9	11.7	57.6	5.7	68.1
1996	683	88.0	79.6	76.3	36.9	32.6	11.7	59.8	3.8	70.4
1997	838	88.1	79.5	75.3	37.2	33.4	11.6	59.4	4.9	69.8
1998	944	86.5	79.0	74.2	42.1	30.2	12.5	60.3	4.4	70.8
1999	912	85.1	77.1	71.8	35.4	33.2	10.0	61.5	3.6	70.9
2000	955	86.8	78.4	76.1	35.2	38.5	9.5	66.5	3.8	75.2
2001	977	87.0	79.9	76.7	29.7	42.4	8.1	67.3	2.7	75.8
2002	958	84.1	75.9	72.1	28.2	44.5	7.4	68.1	2.9	75.1
2003	1,035	86.6	77.0	74.6	27.1	45.5	6.4	70.4	3.1	77.0
2004	1,058	86.2	78.4	74.0	28.5	43.8	7.7	68.9	2.6	75.5
2005	1,106	86.3	76.9	73.1	25.4	46.0	8.0	66.5	3.3	73.6
2006	1,173	87.3	77.4	74.8	26.0	47.3	8.1	67.8	3.3	74.5
2007	1,162	88.3	77.7	75.1	27.7	45.2	5.9	69.9	2.6	76.0
2008	1,239	89.5	81.4	76.9	27.8	49.1	6.5	71.8		
2009	1,214	90.1	83.4	79.6	24.7	51.8				
2010	1,296	89.3	81.2	77.2						
2011	1,247	90.7	84.6							
2012	1,370	91.0								

\* 2010 Cohort sizes have been updated to include UMUC in the total.

\*\* New federal race and ethnicity definitions were introduced in 2010. Figures before and after 2010 may not be directly comparable

Source: MHEC Enrollment and Degree Information Systems

**Trends in Retention and Graduation Rates**  
**MARYLAND PUBLIC COLLEGES AND UNIVERSITIES**  
Hispanic Students

Percent enrolled at original campus or graduated from **any** campus after:

Cohort	N	One Year	Two Years	Three Years	Four Years		Five Years		Six Years	
					Enrolled	Graduated	Enrolled	Graduated	Enrolled	Graduated
1987	160	81.3	66.2	61.9	43.1	16.3	14.4	41.9	7.5	52.5
1988	191	78.5	68.6	62.3	34.0	20.4	11.5	44.0	8.9	51.3
1989	162	81.5	72.8	61.7	35.8	20.3	14.8	45.1	4.3	55.5
1990	199	75.4	59.8	57.8	34.7	18.6	13.6	40.2	3.5	50.7
1991	233	77.3	65.6	60.1	38.2	21.0	14.2	42.5	5.6	51.9
1992	190	77.4	62.1	61.6	35.3	15.3	12.6	37.9	3.2	47.9
1993	205	75.6	64.4	60.5	36.1	17.1	12.2	37.6	5.9	47.8
1994	235	80.0	61.7	57.4	34.9	19.1	11.1	41.7	3.8	54.5
1995	267	80.5	67.0	61.4	36.3	19.4	11.6	43.8	4.9	52.1
1996	290	80.3	72.4	67.9	34.5	25.5	10.0	49.0	4.1	56.5
1997	295	79.3	65.8	63.7	31.5	28.5	8.8	54.9	3.4	61.3
1998	322	83.9	68.9	64.6	32.0	28.9	8.7	54.4	4.0	62.1
1999	339	80.2	68.1	66.1	33.0	27.2	6.5	51.7	1.8	58.7
2000	321	83.8	75.1	71.3	30.8	33.6	8.1	60.1	2.2	67.0
2001	355	84.5	74.0	71.5	32.1	29.9	4.2	60.3	1.4	67.0
2002	355	83.1	74.7	72.3	30.1	38.6	6.8	61.7	2.5	69.0
2003	409	84.4	72.9	69.4	25.9	39.4	6.6	60.6	2.7	66.7
2004	383	83.8	75.5	72.8	28.2	38.9	6.0	61.4	3.9	66.1
2005	456	78.9	78.9	67.3	25.0	37.7	5.9	57.9	1.5	61.4
2006	536	80.8	70.3	68.8	24.8	39.9	6.0	59.0	2.2	64.0
2007	511	83.4	74.0	71.6	25.2	40.7	6.3	62.6	3.3	68.3
2008	563	81.0	72.3	68.7	27.5	38.4	5.0	61.6		
2009	559	84.8	75.1	71.9	28.8	38.5				
2010	712	82.7	72.5	69.9						
2011	731	86.0	76.7							
2012	781	83.1								

\* 2010 Cohort sizes have been updated to include UMUC in the total.

\*\* New federal race and ethnicity definitions were introduced in 2010. Figures before and after 2010 may not be directly comparable

Source: MHEC Enrollment and Degree Information Systems

**Trends in Retention and Graduation Rates**  
**MARYLAND PUBLIC COLLEGES AND UNIVERSITIES**  
**African American Male Students**

Percent enrolled at original campus or graduated from **any** campus after:

Cohort	N	One Year	Two Years	Three Years	Four Years		Five Years		Six Years	
					Enrolled	Graduated	Enrolled	Graduated	Enrolled	Graduated
1987	926	65.7	49.7	44.9	31.9	7.0	15.8	20.5	6.8	28.7
1988	1,095	72.4	58.1	49.8	36.0	6.9	16.4	24.2	6.4	33.9
1989	1,101	73.2	57.9	49.0	37.1	6.8	13.4	24.6	8.0	32.2
1990	1,185	70.5	56.6	48.9	35.1	6.5	16.9	22.8	8.1	30.1
1991	1,203	68.7	53.4	47.1	32.6	8.1	13.1	24.7	4.6	32.0
1992	1,273	73.4	55.3	47.3	32.6	7.8	14.5	21.9	6.7	29.5
1993	1,351	71.0	56.1	47.6	34.4	7.8	14.5	23.7	6.3	31.6
1994	1,317	69.2	55.4	46.5	32.6	8.7	11.8	25.0	4.9	33.6
1995	1,327	74.6	58.3	51.3	34.4	9.8	13.9	26.6	6.1	34.5
1996	1,293	72.5	59.7	51.3	35.3	10.4	14.5	28.5	6.3	37.3
1997	1,407	76.1	62.0	53.8	37.5	10.8	15.1	27.9	6.8	36.4
1998	1,339	74.2	58.5	51.1	34.7	10.9	13.6	28.6	6.9	37.1
1999	1,375	74.9	61.3	52.9	36.7	11.8	15.1	31.6	5.9	40.2
2000	1,317	73.3	59.3	52.6	34.9	11.2	13.9	29.9	5.2	38.7
2001	1,562	73.9	58.5	50.5	31.9	12.9	11.8	30.0	5.6	37.5
2002	1,512	72.8	57.9	50.7	34.1	11.2	13.4	28.7	6.3	36.2
2003	1,644	73.4	58.6	50.7	33.0	12.4	11.9	30.7	5.4	38.1
2004	1,666	70.9	57.9	50.2	35.7	10.8	14.8	27.3	6.7	36.4
2005	1,652	69.9	54.8	48.7	29.7	12.9	13.0	28.8	7.1	35.9
2006	1,890	69.2	55.0	48.5	32.3	11.7	13.6	28.6	5.7	36.6
2007	1,831	71.5	55.4	49.6	33.5	11.2	13.3	28.0	6.3	36.5
2008	2,026	71.1	55.9	50.0	30.8	12.5	12.0	29.8		
2009	1,890	69.3	56.1	50.5	33.9	12.2				
2010	1,893	73.6	58.3	53.0						
2011	1,719	72.8	59.1							
2012	1,597	73.7								

\* 2010 Cohort sizes have been updated to include UMUC in the total.

\*\* New federal race and ethnicity definitions were introduced in 2010. Figures before and after 2010 may not be directly comparable

Source: MHEC Enrollment and Degree Information Systems

**Trends in Retention and Graduation Rates**  
**MARYLAND PUBLIC COLLEGES AND UNIVERSITIES**  
**African American Female Students**

Percent enrolled at original campus or graduated from **any** campus after:

Cohort	N	One Year	Two Years	Three Years	Four Years		Five Years		Six Years	
					Enrolled	Graduated	Enrolled	Graduated	Enrolled	Graduated
1987	1,566	70.7	56.6	50.4	29.4	15.4	11.1	33.2	5.3	39.6
1988	1,606	72.3	58.6	51.6	31.1	17.0	10.2	36.3	4.5	43.0
1989	1,637	75.4	60.3	53.3	32.6	15.4	11.1	36.7	6.6	43.7
1990	1,615	75.9	61.0	54.3	33.4	15.2	13.4	35.2	6.4	44.8
1991	1,776	76.2	63.4	57.3	33.2	18.7	11.7	38.1	5.3	45.4
1992	1,685	78.5	63.2	56.9	33.1	19.6	10.6	40.6	5.0	47.3
1993	1,893	78.2	62.8	56.0	32.2	20.0	11.7	39.7	4.9	46.3
1994	1,976	78.8	64.5	58.1	31.5	21.5	10.5	41.7	4.7	49.7
1995	2,196	79.5	62.7	56.0	29.4	22.0	11.5	40.8	4.7	48.3
1996	2,135	77.7	64.9	58.2	30.6	22.9	10.6	42.7	5.0	49.9
1997	2,043	79.3	65.2	58.7	29.8	24.9	9.9	44.6	4.1	52.3
1998	2,233	77.2	63.0	57.9	31.5	21.1	10.5	42.2	4.4	50.9
1999	2,011	78.4	67.2	62.0	29.8	26.5	10.6	46.0	5.0	52.5
2000	2,109	75.9	62.0	56.0	28.8	22.7	10.2	42.0	4.6	49.2
2001	2,530	75.5	62.1	56.9	27.2	24.6	9.1	42.7	4.5	49.1
2002	2,463	73.3	60.7	55.3	26.6	23.3	9.3	40.9	3.8	47.1
2003	2,671	74.6	62.1	55.9	28.5	22.4	9.6	39.9	4.9	46.4
2004	2,604	73.2	57.6	51.8	26.3	22.2	10.1	37.4	5.0	44.1
2005	2,762	73.5	58.1	53.4	25.6	23.8	9.6	40.6	4.5	46.0
2006	3,156	70.0	56.4	51.8	27.4	20.2	9.2	38.2	4.2	44.5
2007	2,892	73.7	60.0	55.4	30.3	21.0	9.0	40.8	4.0	48.4
2008	3,134	73.9	60.4	55.6	28.9	21.6	10.0	40.9		
2009	2,853	73.5	60.6	54.5	29.8	20.8				
2010	2,738	76.4	60.3	56.8						
2011	2,581	77.1	65.4							
2012	2,501	76.4								

\* 2010 Cohort sizes have been updated to include UMUC in the total.

\*\* New federal race and ethnicity definitions were introduced in 2010. Figures before and after 2010 may not be directly comparable

Source: MHEC Enrollment and Degree Information Systems



**Trends in Retention and Graduation Rates**  
**MARYLAND PUBLIC COLLEGES AND UNIVERSITIES**  
Hispanic Male Students

Percent enrolled at original campus or graduated from **any** campus after:

Cohort	N	One Year	Two Years	Three Years	Four Years		Five Years		Six Years	
					Enrolled	Graduated	Enrolled	Graduated	Enrolled	Graduated
1987	88	77.3	58.0	53.4	39.8	11.4	17.0	29.5	8.0	42.0
1988	92	76.1	63.0	58.7	37.0	12.0	12.0	35.9	10.9	45.7
1989	74	77.0	66.2	56.8	41.9	8.1	23.0	27.0	5.4	40.5
1990	104	71.2	51.9	51.9	28.8	14.4	12.5	30.8	1.9	41.3
1991	114	74.6	61.4	58.8	43.9	11.4	16.7	35.1	7.0	45.6
1992	91	76.9	60.4	58.2	31.9	12.1	13.2	33.0	2.2	40.7
1993	94	72.3	59.6	55.3	43.6	9.6	18.1	29.8	9.6	44.7
1994	104	78.8	58.7	56.7	46.2	5.8	15.4	32.7	4.8	46.2
1995	106	80.2	67.0	61.3	42.5	13.2	24.6	7.2	6.6	50.0
1996	141	81.6	73.0	68.1	39.0	22.0	10.6	41.8	5.0	49.6
1997	126	78.6	62.7	61.9	32.5	22.2	7.9	46.8	3.2	55.6
1998	139	79.1	62.6	56.8	30.2	23.7	10.1	46.8	4.3	54.7
1999	178	77.5	65.7	61.8	33.7	20.8	6.7	43.3	2.8	52.2
2000	140	80.0	69.3	63.6	32.9	24.3	7.9	53.6	2.1	60.7
2001	164	82.9	73.8	70.7	41.5	17.7	6.1	55.5	1.8	64.6
2002	168	79.2	73.2	69.0	33.9	29.8	7.7	54.2	4.8	63.7
2003	185	84.3	69.2	64.3	28.6	28.1	5.4	56.2	2.2	61.1
2004	176	77.8	69.3	65.9	32.4	27.3	8.0	51.7	5.1	57.4
2005	203	77.8	71.9	68.0	27.6	35.0	6.4	57.1	1.8	61.1
2006	228	78.5	68.0	65.4	29.4	31.1	7.5	52.2	2.2	57.9
2007	241	82.2	71.8	70.5	28.2	35.7	7.3	55.1	4.6	62.2
2008	249	76.7	68.3	64.7	24.2	29.3	6.4	55.4		
2009	263	84.0	73.0	69.6	31.6	31.6				
2010	288	81.6	69.7	67.0						
2011	323	83.9	73.4							
2012	350	82.3								

\* 2010 Cohort sizes have been updated to include UMUC in the total.

\*\* New federal race and ethnicity definitions were introduced in 2010. Figures before and after 2010 may not be directly comparable

Source: MHEC Enrollment and Degree Information Systems

**Trends in Retention and Graduation Rates**  
**MARYLAND PUBLIC COLLEGES AND UNIVERSITIES**  
 Hispanic Female Students

Percent enrolled at original campus or graduated from **any** campus after:

Cohort	N	One Year	Two Years	Three Years	Four Years		Five Years		Six Years	
					Enrolled	Graduated	Enrolled	Graduated	Enrolled	Graduated
1987	72	86.1	76.4	72.2	47.2	22.2	11.1	56.9	6.9	65.3
1988	99	80.8	73.7	65.7	31.3	28.3	11.1	51.5	7.1	56.6
1989	88	85.2	78.4	65.9	30.7	30.7	8.0	60.2	3.4	68.2
1990	95	80.0	68.4	64.2	41.1	23.2	14.7	50.5	5.3	61.1
1991	119	79.8	69.7	61.3	32.8	30.3	11.8	49.6	4.2	58.0
1992	99	77.8	63.6	64.6	38.4	18.2	12.1	42.4	4.0	54.5
1993	111	78.4	68.5	64.9	29.7	23.4	7.2	44.1	2.7	50.5
1994	131	80.9	64.1	58.0	26.0	29.8	7.6	48.9	3.1	61.1
1995	161	80.7	67.1	61.5	32.3	23.6	8.7	46.6	3.7	53.4
1996	149	79.2	71.8	67.8	30.2	28.9	9.4	55.7	3.4	63.1
1997	169	79.9	68.0	65.1	30.8	33.1	9.5	60.9	3.6	65.7
1998	183	87.4	73.8	70.5	33.3	32.8	7.7	60.1	3.8	67.8
1999	161	83.2	70.8	70.8	32.3	34.2	6.2	60.9	0.6	65.8
2000	181	86.7	79.6	77.3	29.3	40.9	8.3	65.2	2.2	71.8
2001	191	85.9	74.3	72.3	24.1	40.3	2.6	64.4	1.0	69.1
2002	187	86.6	75.9	75.4	26.7	46.5	5.9	68.4	0.5	73.8
2003	224	84.4	75.9	73.7	23.7	48.7	7.6	64.3	3.1	71.4
2004	207	88.9	80.7	78.7	24.6	48.8	4.3	69.6	2.9	73.4
2005	253	79.8	69.6	66.8	22.9	39.9	5.5	58.5	1.2	61.7
2006	308	82.5	72.1	71.4	21.4	46.4	5.5	64.0	2.3	68.5
2007	269	84.8	76.2	72.9	23.0	45.7	5.2	66.1	2.2	73.7
2008	314	84.4	75.5	72.6	24.2	45.5	3.8	66.6		
2009	296	85.5	77.7	74.0	26.4	44.6				
2010	424	83.7	71.7	71.9						
2011	408	87.7	79.4							
2012	431	83.3								

\* 2010 Cohort sizes have been updated to include UMUC in the total.

\*\* New federal race and ethnicity definitions were introduced in 2010. Figures before and after 2010 may not be directly comparable

Source: MHEC Enrollment and Degree Information Systems

# **INSTITUTIONAL TRENDS IN RETENTION AND GRADUATION RATES**

**ALL STUDENTS**

Trends in Retention and Graduation Rates  
**BOWIE STATE UNIVERSITY**  
 All Students

Percent enrolled at original campus or graduated from any campus after:

Cohort	N	One Year	Two Years	Three Years	Four Years		Five Years		Six Years	
					Enrolled	Graduated	Enrolled	Graduated	Enrolled	Graduated
1991	383	74.9	61.1	53.8	37.6	11.7	15.4	31.0	6.3	38.9
1992	405	73.3	58.8	51.6	36.8	9.6	15.6	27.7	7.9	38.1
1993	361	65.4	54.6	46.3	35.2	10.8	13.0	26.8	6.9	34.4
1994	369	74.3	61.5	55.8	36.3	13.6	16.3	33.3	8.7	42.3
1995	463	73.7	58.5	51.8	35.9	14.3	15.8	32.9	7.1	40.6
1996	305	70.8	60.3	55.4	36.1	14.4	14.4	33.4	7.5	39.4
1997	360	70.8	61.7	52.2	37.8	12.8	14.4	30.8	7.5	39.4
1998	419	73.3	55.4	51.5	35.1	13.4	16.7	31.7	8.8	41.1
1999	343	71.1	59.5	50.7	36.2	14.6	18.1	32.9	6.4	40.8
2000	363	73.0	62.0	52.9	36.9	12.7	17.4	30.6	7.4	39.4
2001	599	74.9	58.4	53.3	33.1	15.4	14.9	31.8	7.2	40.2
2002	576	69.8	60.6	55.7	31.6	19.2	10.6	38.2	6.1	45.0
2003	766	72.7	60.2	51.8	34.6	14.0	12.4	34.7	4.3	43.2
2004	627	76.9	60.3	53.0	34.8	15.3	16.6	32.1	8.6	41.0
2005	923	71.7	58.9	54.1	29.4	22.9	13.9	37.6	8.0	43.8
2006	765	70.3	53.9	49.2	35.4	11.5	16.0	29.0	6.4	37.1
2007	820	69.5	56.7	47.8	32.4	13.8	13.9	29.5	6.7	38.7
2008	773	70.8	55.2	49.4	33.8	9.1	14.4	30.0		
2009	706	70.4	57.6	52.7	38.4	11.6				
2010	671	73.5	56.3	49.0						
2011	623	71.3	56.7							
2012	477	70.2								

Source: MHEC Enrollment and Degree Information Systems

**Trends in Retention and Graduation Rates**  
**COPPIN STATE UNIVERSITY**  
All Students

Percent enrolled at original campus or graduated from any campus after:

Cohort	N	One Year	Two Years	Three Years	Four Years		Five Years		Six Years	
					Enrolled	Graduated	Enrolled	Graduated	Enrolled	Graduated
1991	311	66.9	54.0	48.5	31.2	9.6	14.8	19.6	8.4	27.0
1992	349	72.8	48.7	39.3	28.4	4.9	14.9	15.2	10.0	21.2
1993	500	64.6	40.6	33.8	25.2	5.2	13.6	13.4	7.2	18.8
1994	384	65.1	48.4	42.2	31.8	6.0	15.9	15.9	9.6	25.3
1995	439	72.2	54.9	47.4	33.3	7.1	20.3	18.3	9.1	26.4
1996	514	69.6	54.1	46.5	35.8	6.2	19.5	18.7	9.1	29.3
1997	383	72.1	53.3	45.7	36.0	4.4	19.1	17.0	10.4	23.5
1998	457	72.2	53.4	45.1	32.4	7.2	17.3	19.5	9.0	26.5
1999	441	68.9	49.7	39.9	24.7	9.3	12.9	19.2	7.5	24.7
2000	417	71.2	50.1	40.0	27.6	5.2	15.3	13.9	7.2	20.7
2001	540	69.6	45.9	38.2	23.7	7.6	13.1	17.0	6.3	22.0
2002	579	68.9	48.5	37.5	26.1	5.7	12.4	15.0	6.6	18.3
2003	571	65.3	49.3	37.0	25.7	5.1	12.1	12.6	8.6	17.5
2004	601	63.1	44.4	35.4	26.5	5.2	15.0	11.6	8.7	18.3
2005	689	63.4	39.6	32.5	21.8	4.2	11.0	13.6	6.8	18.0
2006	508	59.8	43.3	35.8	24.8	5.5	14.8	14.2	7.3	19.7
2007	570	58.4	37.5	32.3	24.2	4.6	14.7	10.7	7.5	16.0
2008	605	61.8	42.6	35.9	25.6	4.6	13.4	12.6		
2009	566	60.4	43.8	34.6	23.0	5.5				
2010	525	63.6	39.6	31.6						
2011	486	65.4	46.5							
2012	430	61.4								

Source: MHEC Enrollment and Degree Information Systems

**Trends in Retention and Graduation Rates**  
**FROSTBURG STATE UNIVERSITY**  
All Students

Percent enrolled at original campus or graduated from any campus after:

Cohort	N	One Year	Two Years	Three Years	Four Years		Five Years		Six Years	
					Enrolled	Graduated	Enrolled	Graduated	Enrolled	Graduated
1991	763	73.7	63.3	59.1	29.4	25.8	6.6	51.8	1.2	60.2
1992	840	76.0	62.3	56.8	26.5	28.2	3.3	56.7	1.3	63.1
1993	910	70.8	59.3	54.9	28.9	22.3	6.4	49.0	1.4	56.6
1994	811	70.5	60.7	55.5	30.7	24.0	5.8	53.5	2.2	59.8
1995	913	71.0	57.2	52.0	27.5	23.2	6.0	50.7	1.6	58.9
1996	978	70.7	57.2	52.9	30.1	22.0	5.8	50.7	1.7	56.4
1997	869	72.5	60.0	57.7	28.0	26.5	5.6	53.1	2.3	58.3
1998	937	72.5	59.1	55.0	31.1	21.0	6.1	48.5	1.8	57.1
1999	939	73.8	60.4	55.2	31.7	19.7	6.7	46.9	1.1	55.7
2000	1,031	69.8	58.3	55.0	29.7	21.4	5.6	48.0	1.8	55.0
2001	927	75.7	62.4	57.4	28.9	23.1	3.9	51.8	0.8	58.9
2002	1,001	70.2	58.9	53.9	25.8	24.3	6.0	49.7	1.9	57.2
2003	990	73.7	61.1	56.9	29.1	24.2	6.0	53.6	1.7	60.4
2004	959	70.5	58.7	54.6	29.8	24.0	6.6	49.8	2.3	56.3
2005	929	71.7	56.8	54.4	29.9	21.3	7.1	46.2	1.9	53.0
2006	1,013	67.4	56.4	52.6	28.8	19.5	6.0	44.8	2.3	52.4
2007	1,059	74.3	60.1	55.0	27.1	23.6	6.5	47.1	1.9	56.1
2008	1,030	71.9	58.8	54.5	30.3	21.2	4.7	48.6		
2009	1,031	73.8	61.7	56.9	30.9	23.6				
2010	1,028	70.8	59.7	53.6						
2011	825	72.1	60.2							
2012	814	76.8								

Source: MHEC Enrollment and Degree Information Systems

Trends in Retention and Graduation Rates  
**SALISBURY UNIVERSITY**  
 All Students

Percent enrolled at original campus or graduated from any campus after:

Cohort	N	One Year	Two Years	Three Years	Four Years		Five Years		Six Years	
					Enrolled	Graduated	Enrolled	Graduated	Enrolled	Graduated
1991	711	79.2	68.4	64.7	20.7	42.7	4.5	60.4	1.4	65.2
1992	634	82.6	71.3	65.9	21.5	43.2	5.2	63.7	2.1	68.6
1993	726	78.4	66.3	63.5	20.4	42.4	4.5	61.0	1.4	65.6
1994	680	78.4	67.9	66.1	17.8	50.2	3.2	66.5	0.7	70.6
1995	642	83.2	75.0	72.4	18.5	53.0	3.1	70.2	1.6	73.9
1996	734	83.5	73.7	68.3	21.9	45.6	4.9	67.0	1.8	70.8
1997	888	82.0	72.9	70.8	21.4	48.8	3.5	69.8	1.7	73.1
1998	935	81.0	73.1	70.5	21.1	48.1	2.5	68.9	0.6	72.8
1999	878	82.2	75.7	72.3	17.5	53.4	2.7	70.5	1.0	73.0
2000	940	82.8	75.7	72.7	19.1	54.3	3.9	71.6	0.9	75.1
2001	945	81.4	73.2	71.9	22.1	47.4	3.2	70.1	0.7	74.5
2002	908	80.1	73.4	71.8	22.9	47.8	4.4	69.4	1.0	74.9
2003	948	81.1	71.8	70.9	20.3	48.1	4.4	67.8	1.6	72.3
2004	983	83.6	74.8	71.7	22.2	49.1	2.8	71.7	0.5	76.6
2005	956	81.3	72.8	70.9	19.2	48.6	3.5	66.8	1.2	71.6
2006	1,028	80.6	73.8	71.5	19.1	51.1	4.4	68.9	1.2	73.1
2007	1,144	82.7	73.0	69.9	20.5	49.0	3.2	69.3	1.7	73.2
2008	1,201	79.9	72.7	68.9	21.2	46.0	2.6	68.4		
2009	1,279	80.5	72.9	68.8	20.0	47.5				
2010	1,253	82.0	74.1	71.1						
2011	1,252	83.1	75.2							
2012	1,231	79.4								

Source: MHEC Enrollment and Degree Information Systems

Trends in Retention and Graduation Rates  
**TOWSON UNIVERSITY**  
 All Students

Percent enrolled at original campus or graduated from any campus after:

Cohort	N	One Year	Two Years	Three Years	Four Years		Five Years		Six Years	
					Enrolled	Graduated	Enrolled	Graduated	Enrolled	Graduated
1991	1,237	80.4	71.0	66.2	36.1	25.5	10.3	52.5	4.2	60.6
1992	1,334	81.9	72.3	67.7	34.9	28.2	9.4	56.4	3.7	63.2
1993	1,214	79.9	70.9	66.6	36.2	27.3	8.5	55.6	3.3	62.2
1994	1,335	81.1	70.2	65.8	36.5	26.2	10.3	52.5	3.9	59.1
1995	1,488	81.3	73.5	70.1	33.9	32.4	7.4	58.7	2.7	64.5
1996	1,857	80.3	71.2	67.7	34.0	28.6	7.6	54.6	3.7	60.3
1997	1,812	81.7	72.2	68.0	30.7	31.4	9.8	54.2	4.1	59.8
1998	1,931	82.8	74.1	69.8	35.3	31.0	9.0	57.7	3.5	63.9
1999	2,115	81.0	72.3	69.0	33.4	30.7	9.8	54.0	3.6	60.7
2000	1,987	82.1	75.4	70.6	33.8	31.9	8.4	57.9	2.6	64.9
2001	1,912	86.4	76.0	73.0	33.4	35.5	6.9	62.1	2.8	68.1
2002	2,203	83.8	74.9	72.1	30.7	38.3	6.9	64.7	2.6	70.4
2003	1,757	84.4	79.5	76.9	29.0	44.5	5.2	69.8	1.9	75.1
2004	2,085	82.2	76.0	72.7	31.4	39.5	7.1	65.6	2.6	72.6
2005	2,322	79.2	72.6	69.1	28.5	39.6	7.7	62.9	3.7	68.3
2006	2,692	80.9	74.4	70.8	29.8	38.8	7.5	63.1	2.2	69.9
2007	2,657	80.8	73.1	70.6	29.0	39.9	7.4	62.6	2.5	68.0
2008	2,829	83.0	76.4	73.2	29.1	41.5	6.9	65.4		
2009	2,398	84.7	78.2	74.6	29.1	44.4				
2010	2,428	83.6	77.2	74.2						
2011	2,545	85.5	79.3							
2012	2,463	86.0								

Source: MHEC Enrollment and Degree Information Systems



Trends in Retention and Graduation Rates  
**UNIVERSITY OF BALTIMORE**  
 All Students

Percent enrolled at original campus or graduated from **any** campus after:

Cohort	N	One Year	Two Years	Three Years	Four Years		Five Years		Six Years	
					Enrolled	Graduated	Enrolled	Graduated	Enrolled	Graduated
2007	143	67.8	54.5	49.0	21.7	18.9	7.7	38.5	4.2	44.8
2008	163	81.6	63.2	56.4	36.2	17.2	14.7	39.3		
2009	174	83.4	53.5	46.6	34.5	9.2				
2010	163	77.3	54.6	55.8						
2011	155	72.9	55.5							
2012	215	67.4								

Source: MHEC Enrollment and Degree Information Systems

Trends in Retention and Graduation Rates  
**UNIVERSITY OF MARYLAND BALTIMORE COUNTY**  
 All Students

Percent enrolled at original campus or graduated from any campus after:

Cohort	N	One Year	Two Years	Three Years	Four Years		Five Years		Six Years	
					Enrolled	Graduated	Enrolled	Graduated	Enrolled	Graduated
1991	908	80.9	65.7	56.7	33.4	21.2	11.5	44.1	4.8	54.2
1992	878	83.0	69.1	60.8	35.0	22.8	9.8	48.7	3.9	57.4
1993	922	81.5	68.7	60.6	33.3	23.1	10.5	49.0	3.5	60.1
1994	756	82.1	66.3	59.9	32.8	24.2	9.1	50.1	4.1	58.7
1995	955	82.0	68.2	63.3	29.2	30.0	8.8	52.2	4.5	59.5
1996	1,005	82.9	70.2	64.0	30.7	27.7	8.9	50.9	4.3	58.4
1997	1,139	84.2	71.2	64.6	31.0	30.8	8.3	53.0	3.4	61.1
1998	1,247	83.3	69.3	63.1	32.6	27.9	9.9	52.0	4.3	61.8
1999	1,400	81.5	69.5	64.8	31.4	29.0	9.1	54.5	3.4	63.3
2000	1,307	82.4	69.1	65.1	32.0	30.3	9.6	55.1	3.7	63.7
2001	1,333	82.5	72.0	67.4	29.1	34.4	8.0	57.1	3.8	65.0
2002	1,357	82.2	71.3	65.8	31.8	32.3	9.5	57.1	4.2	66.3
2003	1,489	82.1	71.0	67.4	29.8	35.2	8.8	59.4	3.7	67.9
2004	1,403	81.6	69.7	65.1	27.9	35.2	7.8	60.4	3.5	67.1
2005	1,415	82.5	68.7	64.5	28.8	34.5	9.2	58.0	4.7	64.7
2006	1,420	84.4	72.4	69.2	29.6	37.7	9.1	59.3	3.9	67.8
2007	1,425	86.8	75.7	71.8	32.0	35.2	8.4	61.8	3.9	68.8
2008	1,557	85.2	72.1	68.2	32.0	34.2	8.5	59.4		
2009	1,524	83.4	73.2	69.1	29.5	36.2				
2010	1,499	82.8	73.4	68.4						
2011	1,427	83.5	71.8							
2012	1,553	85.3								

Source: MHEC Enrollment and Degree Information Systems

Trends in Retention and Graduation Rates  
**UNIVERSITY OF MARYLAND COLLEGE PARK**  
 All Students

Percent enrolled at original campus or graduated from any campus after:

Cohort	N	One Year	Two Years	Three Years	Four Years		Five Years		Six Years	
					Enrolled	Graduated	Enrolled	Graduated	Enrolled	Graduated
1991	3,091	81.5	71.7	68.6	38.6	25.6	9.9	54.9	3.3	62.8
1992	3,101	83.4	74.1	71.0	38.2	27.7	10.4	55.0	3.4	63.6
1993	3,235	84.9	74.4	70.9	36.8	28.1	9.7	55.1	3.9	63.0
1994	3,687	84.5	74.2	69.9	35.1	28.4	8.4	55.4	3.0	63.3
1995	3,643	86.2	75.0	71.8	32.8	32.8	9.2	57.2	3.7	64.8
1996	3,572	87	78.4	75.1	32.3	37.0	8.1	62.0	2.7	68.9
1997	3,972	87.9	78.9	76.2	31.5	39.0	7.2	64.2	2.2	70.8
1998	4,067	89.6	80.7	78.2	31.5	41.7	7.3	66.8	2.4	72.9
1999	3,906	90.1	82.6	80.4	29.3	45.4	5.3	70.6	2.1	75.9
2000	3,954	90.8	83.9	81.8	26.9	49.1	4.8	74.5	1.8	79.4
2001	4,358	91.6	84.4	82.0	22.9	54.0	3.9	75.2	1.2	79.8
2002	3,900	92.5	85.3	84.3	20.4	58.7	3.2	78.5	1.2	82.1
2003	4,057	92.1	84.8	84.5	20.5	58.6	3.1	78.9	1.2	82.7
2004	4,179	92.4	86.0	83.8	20.7	58.9	3.3	78.9	1.3	82.6
2005	4,199	91.6	85.3	83.6	17.1	62.2	2.7	79.5	1.1	82.3
2006	3,945	92.4	85.8	84.9	20.5	59.5	4.0	78.1	1.3	81.9
2007	4,225	93.7	86.9	86.3	19.5	61.9	3.1	81.0	1.2	84.4
2008	3,902	93.0	88.3	85.4	18.7	63.3	3.4	81.5		
2009	4,211	94.8	89.2	86.4	18.1	65.4				
2010	3,925	94.2	88.4	86.3						
2011	3,990	93.7	88.3							
2012	3,896	94.4								

Source: MHEC Enrollment and Degree Information Systems

Trends in Retention and Graduation Rates  
**UNIVERSITY OF MARYLAND EASTERN SHORE**  
 All Students

Percent enrolled at original campus or graduated from any campus after:

Cohort	N	One Year	Two Years	Three Years	Four Years		Five Years		Six Years	
					Enrolled	Graduated	Enrolled	Graduated	Enrolled	Graduated
1991	569	70.8	51.7	44.1	19.7	14.3	4.7	30.2	1.2	35.3
1992	499	68.1	50.5	37.5	16.6	14.2	4.4	28.8	2.0	34.5
1993	523	72.3	50.7	42.9	20.5	19.2	3.8	35.0	0.8	40.7
1994	739	64.0	47.4	42.2	19.5	19.1	4.2	35.5	1.5	41.0
1995	714	74.4	56.3	46.2	20.6	23.3	5.5	41.5	2.2	47.3
1996	728	75	60.3	47.6	20.6	26.1	4.4	43.4	1.1	49.7
1997	647	76.8	57.8	51.8	20.4	28.5	4.5	45.7	1.1	52.6
1998	622	69.9	55.9	49.0	21.2	26.8	4.0	43.9	1.4	49.5
1999	533	74.1	56.8	52.4	22.1	26.4	6.2	44.3	1.3	49.6
2000	780	66.3	53.9	47.5	22.2	20.0	7.7	34.8	2.8	40.9
2001	1,194	71.4	58.4	48.6	19.8	23.7	5.4	39.3	2.3	45.1
2002	918	69.7	51.2	45.6	19.6	23.6	5.1	40.3	1.7	45.6
2003	951	66.9	47.7	42.1	20.1	19.5	5.8	34.3	2.7	38.7
2004	926	64.3	49.4	42.1	19.3	19.7	7.7	31.4	2.8	37.3
2005	983	64.8	45.8	40.2	20.7	16.5	7.3	30.6	3.1	36.0
2006	1,128	64.6	46.4	42.4	24.5	14.2	8.2	30.0	2.9	37.0
2007	875	65.9	48.1	44.2	27.1	14.3	7.5	32.2	2.2	38.6
2008	1,038	68.6	51.3	46.7	22.9	19.7	8.2	35.5		
2009	876	64.4	51.0	45.0	25.8	14.5				
2010	944	67.8	54.2	46.8						
2011	748	68.6	54.9							
2012	882	67.8								

Source: MHEC Enrollment and Degree Information Systems

Trends in Retention and Graduation Rates  
**MORGAN STATE UNIVERSITY**  
 All Students

Percent enrolled at original campus or graduated from any campus after:

Cohort	N	One Year	Two Years	Three Years	Four Years		Five Years		Six Years	
					Enrolled	Graduated	Enrolled	Graduated	Enrolled	Graduated
1991	1,054	69.7	56.5	50.6	32.0	14.4	13.9	30.1	6.0	36.5
1992	1,135	75.4	58.0	53.0	33.0	16.1	13.7	32.6	5.6	39.2
1993	1,103	75.5	62.4	55.0	34.4	15.0	14.5	34.2	6.4	40.3
1994	996	76.8	62.0	52.1	31.7	15.9	11.6	32.5	5.0	40.0
1995	1,075	74.0	57.3	51.9	28.7	17.7	11.7	32.5	5.5	39.2
1996	1,018	71.2	59.2	52.7	29.2	17.4	13.0	33.6	6.6	40.0
1997	1,150	75.0	60.3	53.3	31.9	16.7	13.1	32.7	5.7	40.9
1998	1,173	73.2	58.3	52.8	31.9	14.5	11.4	33.1	6.3	41.2
1999	1,163	74.4	63.4	56.1	32.5	18.1	13.8	36.3	7.0	43.8
2000	1,114	73.3	57.6	51.9	29.0	18.8	12.6	34.3	6.0	42.3
2001	1,131	69.9	57.9	51.7	31.7	15.5	12.6	32.1	6.4	39.3
2002	1,251	68.1	55.1	49.9	33.4	11.6	15.0	26.9	6.4	34.1
2003	1,225	70.4	56.5	49.5	32.9	11.5	15.2	26.9	7.7	34.8
2004	1,337	68.5	53.0	46.8	32.4	11.8	13.8	26.0	6.8	33.8
2005	765	66.9	53.1	47.1	28.0	12.2	15.4	24.2	7.8	30.7
2006	1,368	61.0	48.5	42.3	26.4	12.4	11.9	25.1	6.7	30.7
2007	1,299	67.7	53.2	48.8	33.4	11.3	13.6	27.2	6.5	34.9
2008	1,431	68.3	53.9	47.9	30.5	12.2	12.9	27.0		
2009	1,263	67.5	53.0	45.3	31.6	10.3				
2010	1,234	72.3	59.4	52.1						
2011	1,068	71.7	57.8							
2012	1,017	72.1								

Source: MHEC Enrollment and Degree Information Systems

**Trends in Retention and Graduation Rates**  
**ST. MARY'S COLLEGE OF MARYLAND**  
All Students

Percent enrolled at original campus or graduated from any campus after:

Cohort	N	One Year	Two Years	Three Years	Four Years		Five Years		Six Years	
					Enrolled	Graduated	Enrolled	Graduated	Enrolled	Graduated
1991	227	88.1	79.7	75.2	10.1	66.1	0.9	79.7	0.9	81.1
1992	234	88.0	75.2	75.6	16.2	56.0	1.7	75.6	0.0	77.3
1993	285	87.0	72.3	72.6	10.5	59.3	0.4	75.1	0.4	76.5
1994	304	84.2	67.1	66.7	8.9	58.9	1.6	70.4	0.0	73.1
1995	352	86.9	79.0	76.4	14.8	60.8	2.0	76.1	1.4	77.6
1996	324	89.5	83.0	81.7	8.6	70.4	0.9	83.6	0.6	84.0
1997	352	85.8	78.7	76.5	8.5	70.4	1.1	80.4	0.0	81.6
1998	333	85.0	77.5	77.8	11.7	64.9	1.5	76.0	0.6	79.9
1999	282	80.1	74.1	72.0	8.5	64.2	1.4	73.4	1.4	74.9
2000	376	86.7	83.0	82.7	9.3	71.8	1.1	82.5	0.0	84.1
2001	463	90.4	84.2	83.4	6.5	76.7	1.3	83.5	0.2	85.5
2002	425	85.2	78.1	76.2	6.6	69.5	0.5	78.4	0.2	80.9
2003	421	89.3	84.6	81.0	7.6	74.8	2.1	83.4	0.5	85.5
2004	431	88.6	81.2	78.0	6.3	72.2	0.9	80.5	0.2	82.1
2005	488	86.7	82.0	81.6	10.0	71.1	1.6	79.9	0.2	82.4
2006	428	90.9	83.4	81.8	6.5	74.3	0.7	78.0	0.0	79.4
2007	464	89.2	82.1	80.4	6.0	71.3	0.4	80.4	0.2	83.2
2008	456	90.8	85.1	81.6	7.0	74.8	1.1	85.1		
2009	488	87.3	81.2	80.1	8.6	69.7				
2010	442	87.3	77.8	73.5						
2011	455	85.5	78.2							
2012	419	90.0								

Source: MHEC Enrollment and Degree Information Systems

**INSTITUTIONAL TRENDS IN RETENTION  
AND GRADUATION RATES  
BY RACIAL AND ETHNIC BACKGROUND**

Trends in Retention and Graduation Rates  
**BOWIE STATE UNIVERSITY**  
 African American Students

Percent enrolled at original campus or graduated from any campus after:

Cohort	N	One Year	Two Years	Three Years	Four Years		Five Years		Six Years	
					Enrolled	Graduated	Enrolled	Graduated	Enrolled	Graduated
1991	348	75.9	61.8	55.2	38.5	11.8	16.1	31.1	6.6	38.7
1992	375	74.9	60.8	53.3	39.2	8.8	16.3	27.5	8.3	38.1
1993	335	65.7	54.6	46.9	35.8	11.0	13.4	27.8	6.9	34.9
1994	341	76.0	63.9	58.4	37.8	14.7	17.6	33.7	9.4	43.4
1995	419	74.7	58.9	52.0	36.8	13.6	16.0	33.4	6.7	41.5
1996	271	70.1	59.8	55.4	36.2	14.4	15.5	32.8	8.1	39.1
1997	327	71.6	61.2	51.7	37.9	12.5	15.3	30.3	7.3	39.1
1998	380	74.5	56.6	53.5	36.8	13.4	17.9	32.6	9.2	42.9
1999	302	73.5	62.6	53.0	38.7	13.6	20.2	32.1	7.3	40.7
2000	339	73.8	62.5	54.3	37.8	12.7	17.1	31.3	7.1	39.5
2001	565	75.6	59.0	54.0	34.7	14.9	15.8	31.5	7.6	40.2
2002	524	70.2	61.1	56.5	32.8	18.4	10.9	38.0	6.1	45.0
2003	714	74.0	61.4	52.9	35.4	13.9	11.8	35.3	3.9	43.4
2004	577	77.8	61.4	53.2	34.7	15.3	17.2	31.4	9.0	40.0
2005	858	72.2	59.1	54.2	30.4	21.8	14.6	36.7	8.4	42.8
2006	717	71.1	54.3	49.2	35.8	11.7	16.0	29.2	6.4	37.4
2007	762	69.7	56.8	47.5	32.7	12.9	13.8	28.5	6.8	37.7
2008	710	71.0	55.4	49.9	33.9	9.0	14.8	29.6		
2009	657	70.8	58.0	53.1	38.7	11.3				
2010	625	74.4	57.1	50.4						
2011	570	72.3	57.0							
2012	423	70.7								

\* New federal race and ethnicity definitions were introduced in 2010. Figures before and after 2010 may not be directly comparable

Source: MHEC Enrollment and Degree Information Systems



**Trends in Retention and Graduation Rates**  
**COPPIN STATE UNIVERSITY**  
**African American Students**

Percent enrolled at original campus or graduated from any campus after:

Cohort	N	One Year	Two Years	Three Years	Four Years		Five Years		Six Years	
					Enrolled	Graduated	Enrolled	Graduated	Enrolled	Graduated
1991	276	68.8	55.8	50.8	33.3	9.4	16.3	19.9	9.4	27.8
1992	325	73.2	50.5	40.6	30.2	5.2	15.4	16.0	10.2	22.1
1993	444	66.4	44.1	36.2	27.7	5.4	15.1	14.2	7.7	20.1
1994	364	66.5	48.9	43.4	33.2	5.5	16.5	15.9	9.9	25.8
1995	416	73.8	55.5	47.8	34.1	6.7	20.9	18.0	8.9	26.7
1996	492	70.3	54.9	46.7	36.8	5.5	20.1	18.5	9.6	29.2
1997	355	73.8	54.6	46.8	37.2	3.7	20.3	16.6	11.0	23.7
1998	439	72.0	53.3	44.8	32.6	7.0	17.3	19.6	8.7	26.6
1999	424	68.9	48.8	39.1	24.5	8.8	13.2	18.7	7.8	23.8
2000	396	71.3	50.3	39.7	28.3	4.3	15.7	13.4	7.3	20.2
2001	516	70.0	45.5	38.6	24.4	6.6	13.6	16.3	6.6	21.5
2002	562	69.2	49.5	38.4	26.7	5.6	12.6	15.1	6.6	18.5
2003	557	66.1	49.6	37.1	25.9	5.0	12.2	12.6	8.6	17.4
2004	580	63.1	44.3	35.0	26.9	4.3	15.2	10.9	9.0	17.4
2005	660	63.5	39.2	32.3	21.8	4.1	11.2	13.5	7.3	18.3
2006	490	60.0	43.5	35.9	25.5	4.7	15.3	13.5	7.6	19.2
2007	384	58.6	35.2	31.3	26.0	4.4	15.6	9.9	8.3	14.8
2008	554	61.0	41.9	34.8	25.1	4.2	13.0	12.1		
2009	524	59.7	42.8	33.0	22.5	5.0				
2010	451	66.3	41.5	32.4						
2011	410	63.7	44.4							
2012	337	59.1								

\* New federal race and ethnicity definitions were introduced in 2010. Figures before and after 2010 may not be directly comparable

Source: MHEC Enrollment and Degree Information Systems

**Trends in Retention and Graduation Rates**  
**FROSTBURG STATE UNIVERSITY**  
African American Students

Percent enrolled at original campus or graduated from any campus after:

Cohort	N	One Year	Two Years	Three Years	Four Years		Five Years		Six Years	
					Enrolled	Graduated	Enrolled	Graduated	Enrolled	Graduated
1991	75	66.7	56.0	45.3	32.0	9.3	10.7	32.0	1.3	49.3
1992	65	78.5	50.8	35.4	27.7	6.2	1.5	35.4	1.5	44.6
1993	92	70.7	55.4	51.1	39.1	8.7	13.0	31.5	2.2	46.8
1994	78	59.0	48.7	47.4	34.6	7.7	12.8	29.4	1.3	38.5
1995	85	72.9	45.9	38.8	23.5	7.1	7.1	32.9	1.2	44.7
1996	120	69.2	49.2	46.7	30.8	11.6	8.3	35.0	2.5	40.8
1997	106	71.7	58.5	50.9	29.2	17.0	11.3	35.9	4.7	45.3
1998	154	70.8	52.6	48.1	34.4	9.0	11.7	30.5	2.6	46.1
1999	146	78.8	65.8	58.2	35.6	17.2	9.6	44.5	0.7	54.8
2000	152	77.6	62.5	60.5	36.2	17.1	11.2	42.7	2.0	53.9
2001	116	75.0	56.0	48.3	29.3	12.1	6.0	38.8	0.0	49.1
2002	128	66.4	53.1	46.9	26.6	18.0	5.5	43.0	1.6	51.6
2003	128	78.1	64.1	56.3	28.1	21.1	9.4	43.0	3.1	53.9
2004	151	72.8	62.9	57.6	41.1	12.6	11.9	37.7	2.0	49.7
2005	186	76.3	55.9	53.8	35.5	10.2	8.6	40.3	1.6	51.1
2006	215	74.4	56.3	51.6	35.3	12.6	7.4	36.3	1.4	47.4
2007	289	77.9	60.2	52.2	33.2	14.2	6.9	41.2	1.4	53.3
2008	290	72.4	58.3	53.1	36.2	11.4	5.5	41.7		
2009	329	73.3	60.8	56.5	36.5	17.9				
2010	269	70.6	56.9	49.8						
2011	278	75.9	61.5							
2012	242	79.8								

\* New federal race and ethnicity definitions were introduced in 2010. Figures before and after 2010 may not be directly comparable

Source: MHEC Enrollment and Degree Information Systems

Trends in Retention and Graduation Rates  
**SALISBURY UNIVERSITY**  
 African American Students

Percent enrolled at original campus or graduated from any campus after:

Cohort	N	One Year	Two Years	Three Years	Four Years		Five Years		Six Years	
					Enrolled	Graduated	Enrolled	Graduated	Enrolled	Graduated
1991	37	67.6	54.1	54.1	32.4	13.5	8.1	35.1	8.1	43.2
1992	46	73.9	63.0	60.9	34.8	23.9	17.4	41.3	2.2	60.8
1993	54	59.3	55.6	51.9	22.2	27.8	5.6	46.3	1.9	51.9
1994	53	73.6	67.9	62.3	22.6	34.0	5.7	51.0	0.0	60.4
1995	33	81.8	75.8	66.7	33.3	30.3	3.0	57.6	0.0	60.6
1996	61	70.5	62.3	55.7	29.5	24.6	11.5	45.9	4.9	54.1
1997	46	60.9	58.6	52.2	19.6	28.2	4.3	45.6	2.2	54.3
1998	41	70.7	63.4	53.7	9.8	31.7	4.9	51.2	0.0	58.5
1999	35	62.9	62.9	65.8	34.3	28.6	11.4	60.0	2.9	65.7
2000	32	78.1	62.5	56.2	25.0	40.7	9.4	56.3	0.0	62.5
2001	86	74.4	65.2	62.8	26.7	27.9	5.8	53.5	1.2	58.1
2002	84	75.0	73.8	64.3	36.9	20.2	8.3	48.8	2.4	64.3
2003	79	82.3	74.7	73.5	36.7	26.6	7.6	58.2	0.0	64.6
2004	75	80.0	65.3	57.3	30.7	25.3	2.7	50.7	0.0	60.0
2005	94	83	66.0	67.0	33.0	25.5	7.4	52.1	3.2	62.8
2006	125	85.6	76.8	73.6	32.8	32.8	9.6	60.0	1.6	70.4
2007	129	76.0	63.6	62.0	23.3	29.5	5.4	55.8	1.6	62.0
2008	115	78.3	64.3	60.0	23.5	33.0	5.2	53.9		
2009	133	80.5	67.7	63.9	23.3	36.8				
2010	144	82.6	72.2	72.9						
2011	104	78.8	70.2							
2012	120	84.2								

\* New federal race and ethnicity definitions were introduced in 2010. Figures before and after 2010 may not be directly comparable

Source: MHEC Enrollment and Degree Information Systems

Trends in Retention and Graduation Rates  
**TOWSON UNIVERSITY**  
 African American Students

Percent enrolled at original campus or graduated from any campus after:

Cohort	N	One Year	Two Years	Three Years	Four Years		Five Years		Six Years	
					Enrolled	Graduated	Enrolled	Graduated	Enrolled	Graduated
1991	140	75.7	68.6	64.3	40.0	15.0	14.3	43.6	2.9	52.8
1992	127	85.0	75.6	66.1	33.9	24.4	10.2	45.7	7.1	50.4
1993	140	77.1	66.4	60.7	36.4	19.3	12.9	40.0	5.7	48.6
1994	186	78.5	71.0	62.3	40.9	18.3	11.3	43.0	5.4	49.0
1995	147	81.6	70.7	66.0	40.1	17.0	12.2	39.5	6.1	44.9
1996	159	85.5	70.4	67.3	42.1	15.1	15.7	42.8	7.5	48.4
1997	171	80.1	73.1	62.6	34.5	24.0	14.6	44.4	10.5	50.3
1998	163	82.2	72.4	67.5	43.6	16.5	11.7	45.4	2.6	55.2
1999	192	85.4	76.5	73.4	37.5	28.6	17.2	49.0	7.8	57.8
2000	149	87.2	78.5	75.2	40.9	26.8	10.1	55.7	3.4	63.7
2001	152	93.4	82.9	77.7	38.8	31.0	8.6	54.6	5.9	62.5
2002	153	92.2	81.0	77.1	37.9	32.1	11.8	57.5	2.0	69.9
2003	162	90.1	87.0	84.0	42.0	37.7	8.0	67.9	5.6	75.9
2004	169	89.9	83.4	81.7	41.4	30.8	10.1	64.5	2.4	76.9
2005	269	84.8	74.0	68.0	40.1	24.9	14.9	47.6	6.7	56.9
2006	305	84.9	77.4	68.5	41.0	23.0	11.5	53.8	3.9	63.0
2007	261	84.3	74.7	69.0	38.3	27.6	14.6	52.5	5.4	62.1
2008	290	87.6	81.4	78.3	39.3	33.1	11.4	62.1		
2009	293	84.0	79.2	75.1	37.9	35.5				
2010	285	84.6	77.9	73.0						
2011	315	91.1	86.3							
2012	337	91.1								

\* New federal race and ethnicity definitions were introduced in 2010. Figures before and after 2010 may not be directly comparable

Source: MHEC Enrollment and Degree Information Systems

Trends in Retention and Graduation Rates  
**UNIVERSITY OF BALTIMORE**  
 African American Students

Percent enrolled at original campus or graduated from **any** campus after:

Cohort	N	One Year	Two Years	Three Years	Four Years		Five Years		Six Years	
					Enrolled	Graduated	Enrolled	Graduated	Enrolled	Graduated
2007	52	76.9	65.4	53.8	30.8	13.5	11.5	28.8	9.6	34.6
2008	66	74.2	45.5	43.9	33.3	9.1	19.7	27.3		
2009	93	77.4	52.7	46.2	36.6	2.2				
2010	98	79.6	56.1	56.1						
2011	88	75.0	52.3							
2012	119	69.7								

\* New federal race and ethnicity definitions were introduced in 2010. Figures before and after 2010 may not be directly comparable

Source: MHEC Enrollment and Degree Information Systems

Trends in Retention and Graduation Rates  
**UNIVERSITY OF MARYLAND BALTIMORE COUNTY**  
 African American Students

Percent enrolled at original campus or graduated from **any** campus after:

Cohort	N	One Year	Two Years	Three Years	Four Years		Five Years		Six Years	
					Enrolled	Graduated	Enrolled	Graduated	Enrolled	Graduated
1991	171	85.4	68.4	63.2	39.2	21.7	8.8	49.1	4.1	58.5
1992	130	86.2	74.6	63.1	33.8	26.2	9.2	46.1	2.3	53.0
1993	154	92.2	85.1	73.4	39.6	24.0	16.2	47.4	3.2	60.3
1994	128	93.0	80.5	72.7	35.2	30.5	7.0	57.8	2.3	63.3
1995	167	89.8	73.7	70.7	27.5	35.9	7.2	57.5	4.2	61.7
1996	145	88.3	74.5	65.5	32.4	29.0	7.6	54.0	6.2	58.6
1997	183	90.7	78.7	71.0	39.3	29.5	10.4	50.8	2.2	61.2
1998	179	92.7	77.1	70.4	38.0	26.9	10.6	55.4	4.5	64.3
1999	185	87.6	77.8	71.9	39.5	29.2	13.5	52.9	5.4	62.7
2000	166	89.8	75.3	71.1	44.6	25.3	13.9	52.4	6.0	62.0
2001	149	86.6	75.2	73.2	35.6	34.2	6.7	57.1	2.7	64.4
2002	119	86.6	75.6	68.9	41.2	21.8	13.4	52.9	5.9	62.2
2003	157	89.8	80.3	75.2	33.8	33.1	8.9	56.7	3.8	65.6
2004	131	87.8	74.8	70.2	35.9	30.5	11.5	56.5	3.1	65.6
2005	143	91.6	77.6	73.4	35.0	33.6	9.8	57.3	4.2	62.9
2006	167	90.4	81.4	76.6	34.7	34.1	8.4	55.7	3.6	65.3
2007	200	90.5	80.0	77.5	37.0	29.0	13.5	56.5	6.5	67.5
2008	209	87.1	72.7	73.7	36.8	27.3	10.0	54.1		
2009	226	90.3	78.3	77.9	40.7	31.9				
2010	197	84.3	75.6	72.1						
2011	180	85.0	74.4							
2012	171	91.8								

\* New federal race and ethnicity definitions were introduced in 2010. Figures before and after 2010 may not be directly comparable

Source: MHEC Enrollment and Degree Information Systems

**Trends in Retention and Graduation Rates**  
**UNIVERSITY OF MARYLAND COLLEGE PARK**  
**African American Students**

Percent enrolled at original campus or graduated from **any** campus after:

Cohort	N	One Year	Two Years	Three Years	Four Years		Five Years		Six Years	
					Enrolled	Graduated	Enrolled	Graduated	Enrolled	Graduated
1991	405	75.6	61.2	56.5	39.0	14.8	12.1	36.8	4.4	44.9
1992	352	79.5	67.9	66.5	43.2	14.5	14.2	40.7	5.7	47.7
1993	494	82.6	66.4	60.9	41.1	14.2	14.8	36.6	6.3	45.3
1994	526	82.3	70.9	61.8	39.0	15.4	11.0	41.3	2.9	52.1
1995	576	83.3	68.1	61.3	38.9	14.8	14.8	37.0	5.2	48.3
1996	553	83.4	73.2	67.8	41.0	20.8	11.8	45.7	3.4	56.6
1997	579	85.7	73.9	69.6	40.9	20.4	11.7	46.8	3.3	58.0
1998	517	84.3	74.7	68.1	38.1	22.2	11.6	47.4	3.3	56.8
1999	528	88.4	81.3	76.3	37.7	30.5	8.5	57.7	2.8	65.9
2000	476	87.0	77.9	73.5	34.5	31.1	6.7	63.2	1.7	70.4
2001	526	87.6	78.3	74.0	29.8	37.2	6.8	61.4	2.7	67.9
2002	451	88.5	80.3	76.9	27.7	38.8	7.5	62.1	2.7	68.3
2003	518	88.8	80.3	77.4	30.7	40.3	6.2	64.5	2.5	70.8
2004	512	86.9	78.7	74.6	29.5	41.0	5.5	64.5	2.3	71.1
2005	563	89.2	82.1	77.8	27.7	41.9	5.7	68.7	2.0	74.7
2006	611	90.8	83.5	80.5	29.6	42.9	5.6	68.7	1.8	74.6
2007	565	95.2	85.8	83.7	32.2	42.8	6.2	71.7	2.1	77.7
2008	537	90.7	85.7	80.6	27.7	46.0	5.6	71.3		
2009	385	94.5	89.9	84.7	30.9	47.0				
2010	529	93.6	86.8	85.6						
2011	603	94.9	90.0							
2012	583	93.0								

\* New federal race and ethnicity definitions were introduced in 2010. Figures before and after 2010 may not be directly comparable

Source: MHEC Enrollment and Degree Information Systems

**Trends in Retention and Graduation Rates**  
**UNIVERSITY OF MARYLAND EASTERN SHORE**  
**African American Students**

Percent enrolled at original campus or graduated from any campus after:

Cohort	N	One Year	Two Years	Three Years	Four Years		Five Years		Six Years	
					Enrolled	Graduated	Enrolled	Graduated	Enrolled	Graduated
1991	463	73.7	56.2	47.9	21.8	14.2	5.0	30.7	0.9	36.0
1992	395	70.9	52.7	41.0	18.5	14.2	4.1	29.6	2.3	35.2
1993	435	74.3	53.8	44.4	21.1	20.0	4.1	35.8	0.7	41.3
1994	604	66.7	49.5	44.2	20.0	19.4	4.5	36.1	1.7	42.5
1995	602	77.4	59.0	49.1	22.3	23.4	6.0	42.1	2.3	48.0
1996	615	76.9	62.6	49.3	22.6	25.4	4.2	44.5	1.0	50.9
1997	545	79.1	59.8	53.2	21.1	28.7	4.6	45.9	1.1	52.9
1998	523	71.7	56.6	49.7	21.8	26.7	3.8	44.0	1.3	49.7
1999	465	76.6	58.3	53.8	23.0	27.1	5.6	44.9	0.9	49.5
2000	670	67.0	54.8	47.5	21.9	20.1	7.8	34.9	2.7	41.4
2001	883	70.1	57.4	47.7	20.6	23.3	5.3	39.3	2.4	44.8
2002	734	70.9	53.0	46.5	19.9	24.1	5.0	40.2	1.6	45.8
2003	794	67.4	50.0	43.6	21.3	19.3	5.9	34.5	2.6	39.0
2004	753	64.4	48.7	41.6	20.1	17.9	8.4	30.0	2.8	36.1
2005	867	64.8	46.5	40.8	20.8	17.2	7.3	31.1	3.5	36.5
2006	1,005	65.2	47.1	42.5	25.2	13.5	8.3	30.6	2.8	37.7
2007	779	65.7	47.8	43.8	27.7	12.8	7.7	31.2	2.1	37.7
2008	931	69.6	52.2	47.4	23.5	19.3	8.1	35.6		
2009	787	65.7	52.1	46.1	26.2	14.4				
2010	822	69.0	54.9	48.5						
2011	646	68.1	55.0							
2012	737	68.0								

\* New federal race and ethnicity definitions were introduced in 2010. Figures before and after 2010 may not be directly comparable

Source: MHEC Enrollment and Degree Information Systems



**Trends in Retention and Graduation Rates**  
**MORGAN STATE UNIVERSITY**  
**African American Students**

Percent enrolled at original campus or graduated from **any** campus after:

Cohort	N	One Year	Two Years	Three Years	Four Years		Five Years		Six Years	
					Enrolled	Graduated	Enrolled	Graduated	Enrolled	Graduated
1991	1,023	70.1	57.1	50.9	32.3	14.5	14.1	30.4	6.1	36.8
1992	1,108	76.1	58.9	53.8	33.5	16.4	13.7	33.2	5.6	39.8
1993	1,056	76.8	63.7	56.0	34.9	15.4	14.7	34.8	6.5	41.1
1994	965	77.5	62.7	52.7	32.2	16.1	11.9	32.6	5.2	40.3
1995	1,035	75.0	58.3	52.8	29.5	17.5	12.0	32.6	5.5	39.6
1996	968	72.4	61.0	54.0	30.5	17.4	13.4	34.3	6.8	41.0
1997	1,096	75.5	61.0	53.7	32.2	16.8	13.0	33.0	5.7	40.8
1998	1,130	73.6	58.9	53.5	32.7	14.4	11.8	33.0	6.5	41.5
1999	1,070	73.5	62.7	55.5	33.8	16.4	14.5	35.0	7.4	42.9
2000	1,008	71.9	55.5	49.8	31.3	14.6	13.4	31.3	6.3	39.9
2001	1,045	71.0	58.7	52.4	33.8	14.3	13.2	32.0	6.9	39.7
2002	1,166	69.1	56.4	51.1	34.3	11.7	15.6	27.2	6.8	34.6
2003	1,155	71.2	57.2	50.1	33.4	11.6	15.2	27.4	7.6	35.4
2004	1,260	68.4	53.6	47.0	32.6	11.7	14.0	25.9	7.0	33.7
2005	683	66	52.4	45.7	28.3	11.3	14.8	23.7	7.8	30.0
2006	1,285	60.5	47.7	41.6	27.2	11.1	12.2	24.3	6.9	29.9
2007	1,212	67.4	52.5	47.9	34.1	9.7	14.3	25.4	6.7	33.5
2008	1,375	68.5	54.3	48.2	30.9	12.1	12.9	27.2		
2009	1,203	67.3	52.5	45.1	32.1	9.7				
2010	1,098	72.8	59.8	51.7						
2011	975	72.2	57.6							
2012	914	72.0								

\* New federal race and ethnicity definitions were introduced in 2010. Figures before and after 2010 may not be directly comparable

Source: MHEC Enrollment and Degree Information Systems

**Trends in Retention and Graduation Rates**  
**ST. MARY'S COLLEGE OF MARYLAND**  
African American Students

Percent enrolled at original campus or graduated from any campus after:

Cohort	N	One Year	Two Years	Three Years	Four Years		Five Years		Six Years	
					Enrolled	Graduated	Enrolled	Graduated	Enrolled	Graduated
1991	35	88.6	77.1	71.4	20.0	48.6	2.9	71.5	2.9	71.5
1992	28	85.7	71.4	64.3	28.6	32.1	0.0	71.4	0.0	71.4
1993	36	91.7	72.2	66.7	19.4	44.5	0.0	69.5	0.0	72.2
1994	43	74.4	51.2	55.8	11.6	44.2	0.0	62.8	0.0	65.1
1995	37	86.5	73.0	67.6	18.9	43.2	0.0	67.6	0.0	73.0
1996	33	87.9	81.8	84.8	6.1	66.7	0.0	81.8	0.0	81.8
1997	36	86.1	75.0	69.5	11.1	58.4	0.0	75.0	0.0	75.0
1998	39	92.3	76.9	74.4	23.1	41.0	2.6	66.6	2.6	71.8
1999	25	72.0	68.0	60.0	8.0	40.0	0.0	56.0	0.0	60.0
2000	22	81.8	81.8	81.8	4.5	68.2	0.0	72.7	0.0	72.7
2001	33	81.1	75.8	75.7	9.1	66.7	3.0	75.8	3.0	75.8
2002	33	66.7	54.5	54.5	9.1	36.4	0.0	54.5	0.0	57.6
2003	32	90.6	90.6	87.5	18.8	59.4	0.0	81.3	0.0	81.3
2004	31	100.0	93.5	87.1	19.4	71.0	3.2	77.4	0.0	80.6
2005	51	86.3	80.4	80.4	13.7	64.7	3.9	74.5	0.0	76.5
2006	35	77.1	65.7	65.7	8.6	51.4	0.0	60.0	0.0	60.0
2007	43	90.7	79.1	79.1	23.3	48.8	0.0	69.8	0.0	76.7
2008	35	97.1	91.4	80.0	20.0	54.3	5.7	74.3		
2009	41	97.6	85.4	87.8	29.3	53.7				
2010	37	86.5	75.7	73.0						
2011	46	80.4	63.0							
2012	30	76.7								

\* New federal race and ethnicity definitions were introduced in 2010. Figures before and after 2010 may not be directly comparable

Source: MHEC Enrollment and Degree Information Systems

**Trends in Retention and Graduation Rates**  
**BOWIE STATE UNIVERSITY**  
 White Students

Percent enrolled at original campus or graduated from any campus after:

Cohort	N	One Year	Two Years	Three Years	Four Years		Five Years		Six Years	
					Enrolled	Graduated	Enrolled	Graduated	Enrolled	Graduated
1991	26	69.2	57.7	46.1	30.8	15.4	11.5	34.6	3.8	46.2
1992	21	52.4	33.3	28.6	9.5	23.8	4.8	38.1	0.0	42.8
1993	16	56.3	50.0	31.3	25.0	6.3	6.3	18.8	6.3	25.0
1994	18	50.0	33.3	33.3	22.2	0.0	0.0	33.3	0.0	33.3
1995	23	60.9	56.5	47.8	26.1	21.7	4.3	34.7	8.7	34.7
1996	21	81.0	66.7	57.2	38.1	9.5	0.0	38.1	0.0	42.9
1997	19	68.4	73.7	63.2	31.6	21.1	0.0	36.8	5.3	36.8
1998	23	52.2	30.4	21.7	8.7	13.0	0.0	21.7	0.0	21.7
1999	23	52.2	39.1	43.4	21.7	26.0	4.3	43.5	0.0	47.8
2000	10	*	*	*	*	*	*	*	*	*
2001	12	*	*	*	*	*	*	*	*	*
2002	16	68.8	62.6	50.1	12.5	37.6	12.5	43.8	12.5	43.8
2003	18	44.4	33.3	33.4	11.1	22.2	0.0	38.9	0.0	44.4
2004	18	61.1	33.3	33.3	22.2	16.7	0.0	38.9	0.0	50.0
2005	21	66.7	61.9	66.7	4.8	57.1	0.0	66.7	0.0	71.4
2006	6	*	*	*	*	*	*	*	*	*
2007	10	*	*	*	*	*	*	*	*	*
2008	12	*	*	*	*	*	*	*	*	*
2009	9	*	*	*	*	*	*	*	*	*
2010	10	*	*	*	*	*	*	*	*	*
2011	3	*	*	*	*	*	*	*	*	*
2012	7	*	*	*	*	*	*	*	*	*

\*N less than 15

\*\* New federal race and ethnicity definitions were introduced in 2010. Figures before and after 2010 may not be directly comparable

Source: MHEC Enrollment and Degree Information Systems

**Trends in Retention and Graduation Rates**  
**COPPIN STATE UNIVERSITY**  
 White Students

Percent enrolled at original campus or graduated from any campus after:

Cohort	N	One Year	Two Years	Three Years	Four Years		Five Years		Six Years	
					Enrolled	Graduated	Enrolled	Graduated	Enrolled	Graduated
1991	19	52.6	42.1	31.6	0.0	15.8	0.0	15.8	0.0	15.8
1992	12	*	*	*	*	*	*	*	*	*
1993	33	36.4	3.0	3.0	0.0	0.0	0.0	3.0	0.0	0.0
1994	9	*	*	*	*	*	*	*	*	*
1995	1	*	*	*	*	*	*	*	*	*
1996	9	*	*	*	*	*	*	*	*	*
1997	7	*	*	*	*	*	*	*	*	*
1998	7	*	*	*	*	*	*	*	*	*
1999	2	*	*	*	*	*	*	*	*	*
2000	1	*	*	*	*	*	*	*	*	*
2001	4	*	*	*	*	*	*	*	*	*
2002	1	*	*	*	*	*	*	*	*	*
2003	4	*	*	*	*	*	*	*	*	*
2004	2	*	*	*	*	*	*	*	*	*
2005	0	*	*	*	*	*	*	*	*	*
2006	2	*	*	*	*	*	*	*	*	*
2007	0	*	*	*	*	*	*	*	*	*
2008	0	*	*	*	*	*	*	*	*	*
2009	1	*	*	*	*	*	*	*	*	*
2010	9	*	*	*	*	*	*	*	*	*
2011	11	*	*	*	*	*	*	*	*	*
2012	10	*	*	*	*	*	*	*	*	*

\*N less than 15

\*\* New federal race and ethnicity definitions were introduced in 2010. Figures before and after 2010 may not be directly comparable

Source: MHEC Enrollment and Degree Information Systems

**Trends in Retention and Graduation Rates**  
**FROSTBURG STATE UNIVERSITY**  
 White Students

Percent enrolled at original campus or graduated from **any** campus after:

Cohort	N	One Year	Two Years	Three Years	Four Years		Five Years		Six Years	
					Enrolled	Graduated	Enrolled	Graduated	Enrolled	Graduated
1991	654	75.5	65.0	61.6	29.4	28.0	6.1	55.1	1.2	62.4
1992	736	76.1	64.3	59.8	27.0	31.0	3.7	59.3	1.4	65.6
1993	779	71.4	60.7	56.1	28.4	24.1	5.5	51.9	1.4	58.4
1994	701	72.3	62.6	57.3	30.8	26.2	5.1	56.2	2.4	62.0
1995	786	70.7	58.8	53.9	28.2	24.9	6.0	53.0	1.5	60.7
1996	796	71.0	59.2	54.6	30.3	24.2	5.5	53.7	1.5	59.2
1997	722	73.3	61.2	59.7	28.1	28.7	4.6	56.8	1.9	60.8
1998	724	73.3	60.8	56.7	30.2	24.2	5.1	52.2	1.8	59.6
1999	718	74.7	61.1	56.3	31.3	21.3	5.8	49.2	1.3	57.9
2000	797	69.6	59.1	56.2	29.2	22.8	4.8	50.0	1.8	56.7
2001	743	76.3	63.5	59.0	28.4	24.6	3.5	53.3	0.8	59.9
2002	801	71.9	61.7	56.5	26.7	25.2	6.4	51.7	2.1	58.9
2003	783	73.9	61.9	58.0	30.1	24.5	5.7	55.3	1.5	61.7
2004	743	70.3	59.0	55.3	28.3	26.6	5.7	52.6	2.6	57.7
2005	655	71.1	57.7	55.1	28.7	25.3	6.4	48.9	2.0	54.7
2006	702	66.0	57.1	53.8	26.8	22.6	5.1	49.0	2.4	54.7
2007	682	73.9	61.7	57.5	24.6	28.9	6.0	50.9	1.6	58.4
2008	653	72.1	59.7	55.4	26.6	26.3	4.1	52.8		
2009	608	75.2	63.0	58.7	28.3	27.1				
2010	649	71.5	62.6	56.7						
2011	482	70.1	60.4							
2012	467	76.4								

\* New federal race and ethnicity definitions were introduced in 2010. Figures before and after 2010 may not be directly comparable

Source: MHEC Enrollment and Degree Information Systems

**Trends in Retention and Graduation Rates**  
**SALISBURY UNIVERSITY**  
 White Students

Percent enrolled at original campus or graduated from **any** campus after:

Cohort	N	One Year	Two Years	Three Years	Four Years		Five Years		Six Years	
					Enrolled	Graduated	Enrolled	Graduated	Enrolled	Graduated
1991	658	79.9	69.0	65.2	20.1	44.4	4.3	61.7	1.1	66.3
1992	569	83.8	72.8	66.8	20.7	45.0	4.4	66.1	2.1	69.8
1993	653	80.2	67.4	64.8	20.1	44.2	4.6	62.6	1.2	67.2
1994	609	79.3	68.6	67.2	17.6	52.4	3.1	68.4	0.8	72.2
1995	591	83.6	75.1	73.5	17.9	54.6	3.2	71.7	1.7	75.5
1996	651	85.1	75.1	69.9	21.2	48.0	4.5	69.6	1.5	73.1
1997	819	83.6	74.4	72.6	21.4	50.8	3.5	71.9	1.7	74.9
1998	778	82.4	75.5	73.3	22.6	49.1	2.1	71.0	0.4	74.3
1999	766	84.2	77.2	73.7	16.6	56.1	2.6	72.5	1.0	74.7
2000	828	84.3	77.7	74.6	19.2	56.1	3.7	73.6	0.8	76.9
2001	749	83.4	75.2	74.2	22.4	50.7	2.7	73.4	0.7	77.8
2002	722	81.9	73.9	73.3	20.2	52.1	3.5	73.0	1.0	77.3
2003	714	82.8	72.0	71.1	18.3	51.0	3.9	69.3	2.0	73.2
2004	799	83.9	76.5	73.5	21.5	51.6	2.9	74.2	0.5	78.3
2005	790	81.5	73.9	71.9	17.2	52.0	3.0	69.2	1.0	73.3
2006	822	80.8	74.8	72.5	16.9	55.1	3.5	71.9	1.1	75.1
2007	927	84.4	75.5	72.6	19.4	53.8	2.6	72.8	1.7	76.3
2008	997	80.8	73.6	70.3	20.5	47.7	1.9	70.1		
2009	1,036	81.4	74.2	69.9	18.5	50.5				
2010	950	81.9	75.2	71.7						
2011	940	84.8	78.0							
2012	884	79.8								

\* New federal race and ethnicity definitions were introduced in 2010. Figures before and after 2010 may not be directly comparable

Source: MHEC Enrollment and Degree Information Systems

**Trends in Retention and Graduation Rates**  
**TOWSON UNIVERSITY**  
 White Students

Percent enrolled at original campus or graduated from **any** campus after:

Cohort	N	One Year	Two Years	Three Years	Four Years		Five Years		Six Years	
					Enrolled	Graduated	Enrolled	Graduated	Enrolled	Graduated
1991	1,014	82.1	72.3	67.1	35.6	27.5	9.1	55.2	4.0	62.9
1992	1,129	81.7	72.3	68.0	35.1	28.9	8.9	58.5	3.1	65.1
1993	989	80.8	72.3	68.5	36.5	28.8	7.7	59.4	3.0	65.1
1994	1,040	81.9	70.8	67.7	36.5	27.4	9.9	54.7	3.7	61.0
1995	1237	82.1	74.7	71.4	33.3	35.0	6.5	62.0	2.3	67.6
1996	1554	80.6	72.5	68.7	33.5	30.7	6.8	56.9	3.5	62.4
1997	1482	82.7	73.1	69.5	30.6	32.7	8.7	56.7	3.1	62.1
1998	1575	83.3	75.0	71.6	34.5	33.7	8.4	59.9	3.3	65.7
1999	1700	81.6	73.5	69.7	33.9	31.5	9.2	55.6	3.4	62.2
2000	1615	82.1	75.7	71.4	33.6	33.0	8.2	58.8	2.5	65.7
2001	1507	86.5	76.8	74.0	33.2	37.5	6.6	64.9	2.4	70.7
2002	1770	84.2	76.2	73.3	29.9	40.5	6.4	67.1	2.4	72.3
2003	1,262	86.5	81.5	79.3	27.9	47.4	5.3	72.3	1.7	77.3
2004	1,486	82.2	76.5	73.8	31.0	42.4	6.3	67.4	2.2	73.6
2005	1,694	79.2	73.3	70.4	26.3	43.7	6.5	67.1	3.1	71.1
2006	1,909	81.7	75.1	72.9	28.1	42.4	6.7	66.1	1.6	72.2
2007	2,030	80.8	73.6	71.7	27.9	42.0	6.2	64.3	2.1	69.2
2008	2,052	83.2	76.9	73.8	27.9	43.4	6.2	66.8		
2009	1,695	85.1	78.6	75.2	27.4	47.0				
2010	1,787	84.1	78.1	75.0						
2011	1,848	84.3	77.9							
2012	1,662	85.4								

\* New federal race and ethnicity definitions were introduced in 2010. Figures before and after 2010 may not be directly comparable

Source: MHEC Enrollment and Degree Information Systems

Trends in Retention and Graduation Rates  
**UNIVERSITY OF BALTIMORE**  
 White Students

Percent enrolled at original campus or graduated from **any** campus after:

Cohort	N	One Year	Two Years	Three Years	Four Years		Five Years		Six Years	
					Enrolled	Graduated	Enrolled	Graduated	Enrolled	Graduated
2007	48	84.6	50.0	47.9	18.8	22.9	8.3	47.9	2.1	58.3
2008	46	91.3	78.3	73.9	37.0	23.9	15.2	45.7		
2009	41	75.6	51.2	43.9	31.7	22.0				
2010	40	77.5	52.5	57.5						
2011	47	68.1	57.4							
2012	63	63.5								

\* New federal race and ethnicity definitions were introduced in 2010. Figures before and after 2010 may not be directly comparable

Source: MHEC Enrollment and Degree Information Systems



Trends in Retention and Graduation Rates  
**UNIVERSITY OF MARYLAND BALTIMORE COUNTY**  
 White Students

Percent enrolled at original campus or graduated from **any** campus after:

Cohort	N	One Year	Two Years	Three Years	Four Years		Five Years		Six Years	
					Enrolled	Graduated	Enrolled	Graduated	Enrolled	Graduated
1991	557	79.2	64.3	56.4	30.7	22.6	9.9	46.3	3.8	55.6
1992	597	82.4	68.2	60.4	34.8	22.6	8.5	50.6	4.4	58.0
1993	640	78.3	64.4	57.8	31.9	23.0	8.9	49.9	3.4	60.6
1994	485	78.1	62.5	56.9	32.6	22.3	9.9	48.2	4.5	57.5
1995	592	81.6	68.2	63.1	30.4	28.2	9.5	51.0	4.4	58.8
1996	638	80.9	68.5	62.9	29.6	27.8	8.3	50.5	3.9	57.0
1997	660	81.5	68.2	60.6	28.6	29.7	7.1	52.2	3.0	59.8
1998	746	82.8	67.2	61.5	31.1	27.7	9.5	51.2	3.5	61.3
1999	858	80.4	67.4	63.7	27.4	32.1	6.8	55.8	2.9	62.5
2000	794	81.1	68.3	64.4	28.5	31.9	7.2	56.8	3.0	64.1
2001	828	83.1	71.7	67.4	28.5	35.6	7.4	58.3	3.9	65.0
2002	857	83.5	73.5	68.5	30.6	34.9	8.1	59.0	4.0	68.0
2003	881	81.5	70.9	68.1	27.9	38.3	8.1	60.6	3.2	69.5
2004	864	82.3	70.1	65.9	24.4	39.5	5.7	64.4	2.4	70.0
2005	818	81.2	68.1	64.5	26.3	37.2	6.6	61.2	4.0	66.5
2006	756	83.3	74.1	71.6	29.0	40.2	8.2	63.2	3.6	70.2
2007	740	86.8	76.6	73.2	30.5	38.8	6.6	65.7	2.8	71.4
2008	776	84.9	73.2	67.8	30.0	37.8	8.5	62.0		
2009	797	81.4	72.5	68.5	26.5	39.8				
2010	724	83.6	74.7	69.6						
2011	641	83.2	71.6							
2012	724	84.7								

\* New federal race and ethnicity definitions were introduced in 2010. Figures before and after 2010 may not be directly comparable

Source: MHEC Enrollment and Degree Information Systems

**Trends in Retention and Graduation Rates**  
**UNIVERSITY OF MARYLAND COLLEGE PARK**  
 White Students

Percent enrolled at original campus or graduated from **any** campus after:

Cohort	N	One Year	Two Years	Three Years	Four Years		Five Years		Six Years	
					Enrolled	Graduated	Enrolled	Graduated	Enrolled	Graduated
1991	2,007	82.3	73.0	70.1	37.3	28.7	8.3	59.4	3.0	66.3
1992	2,036	83.6	74.4	71.1	33.8	32.4	7.6	59.7	2.5	67.2
1993	1,948	85.3	75.8	72.4	32.9	34.0	7.4	61.7	2.7	68.4
1994	2,297	84.6	74.9	72.0	31.0	34.7	6.3	61.8	2.4	67.6
1995	2210	86.6	76.0	74.1	29.4	39.1	6.9	63.1	2.7	69.1
1996	2220	87.8	78.4	75.8	28.2	42.2	6.0	66.8	2.1	72.1
1997	2463	87.9	79.8	77.5	27.2	45.1	5.2	68.7	1.4	73.9
1998	2545	90.3	81.3	79.9	25.9	49.8	4.6	73.0	1.8	77.0
1999	2472	90.4	83.5	82.4	25.8	51.1	4.0	74.8	1.5	79.0
2000	2476	91.4	84.8	83.3	23.1	55.2	3.8	77.8	1.6	81.7
2001	2764	92.4	85.4	83.9	19.0	60.4	2.7	79.2	0.9	82.6
2002	2500	92.6	85.6	85.4	16.2	64.4	1.9	81.9	0.8	84.4
2003	2,448	92.2	85.5	86.0	17.4	63.2	2.5	82.2	0.9	85.1
2004	2,437	92.7	86.4	84.4	16.5	64.4	2.0	81.7	0.8	84.4
2005	2,417	92.1	85.7	85.0	12.7	68.9	1.5	83.1	0.7	84.8
2006	2,194	92.6	85.8	85.9	16.3	65.5	3.1	80.8	1.1	84.0
2007	2,556	93.3	87.4	87.2	14.7	68.2	2.3	83.7	0.9	86.0
2008	2,272	93.1	88.2	86.5	14.4	69.2	2.3	84.1		
2009	2,635	94.9	89.1	86.7	14.8	70.2				
2010	2,171	94.5	89.1	87.0						
2011	2,115	93.3	87.3							
2012	2,099	94.5								

\* New federal race and ethnicity definitions were introduced in 2010. Figures before and after 2010 may not be directly comparable

Source: MHEC Enrollment and Degree Information Systems

**Trends in Retention and Graduation Rates**  
**UNIVERSITY OF MARYLAND EASTERN SHORE**  
 White Students

Percent enrolled at original campus or graduated from **any** campus after:

Cohort	N	One Year	Two Years	Three Years	Four Years		Five Years		Six Years	
					Enrolled	Graduated	Enrolled	Graduated	Enrolled	Graduated
1991	70	64.3	35.7	31.4	8.6	17.2	4.3	34.3	1.4	37.2
1992	76	56.6	38.2	23.7	9.2	11.8	3.9	25.0	0.0	30.3
1993	59	59.3	28.8	27.1	15.3	11.9	0.0	27.1	1.7	33.9
1994	93	48.4	34.4	30.1	16.1	18.3	4.3	31.2	1.1	33.3
1995	65	55.4	41.5	26.2	9.2	20.0	3.1	36.9	3.1	41.6
1996	66	60.6	42.4	33.3	12.1	28.8	4.5	41.0	1.5	47.0
1997	53	54.7	41.5	35.8	13.2	32.0	1.9	43.3	1.9	47.1
1998	45	62.2	48.9	40.0	17.8	22.2	4.4	37.8	2.2	40.0
1999	39	51.3	41.0	38.5	12.8	23.0	10.3	35.9	5.1	48.7
2000	32	62.5	50.0	40.6	18.8	15.6	9.4	25.0	3.1	31.3
2001	78	66.7	56.5	48.8	11.5	29.5	7.7	35.9	2.6	43.6
2002	69	66.7	40.6	42.0	18.8	20.2	4.3	47.8	1.4	52.2
2003	55	58.2	32.7	27.2	5.5	20.0	3.6	25.5	3.6	27.3
2004	72	61.1	45.9	41.7	13.9	25.0	1.4	40.3	1.4	43.1
2005	37	67.6	35.1	29.7	24.3	5.4	10.8	21.6	0.0	29.7
2006	36	52.8	41.7	38.9	16.7	19.4	5.6	22.2	5.6	27.8
2007	33	66.7	48.5	51.5	15.2	30.3	3.0	45.5	0.0	48.5
2008	37	59.5	40.5	40.5	13.5	29.7	8.1	43.2		
2009	36	66.7	52.8	44.4	25.0	19.4				
2010	62	56.5	51.6	40.3						
2011	46	73.9	54.3							
2012	68	70.6								

\* New federal race and ethnicity definitions were introduced in 2010. Figures before and after 2010 may not be directly comparable

Source: MHEC Enrollment and Degree Information Systems

Trends in Retention and Graduation Rates  
**MORGAN STATE UNIVERSITY**  
 White Students

Percent enrolled at original campus or graduated from any campus after:

Cohort	N	One Year	Two Years	Three Years	Four Years		Five Years		Six Years	
					Enrolled	Graduated	Enrolled	Graduated	Enrolled	Graduated
1991	7	*	*	*	*	*	*	*	*	*
1992	9	*	*	*	*	*	*	*	*	*
1993	14	*	*	*	*	*	*	*	*	*
1994	9	*	*	*	*	*	*	*	*	*
1995	9	*	*	*	*	*	*	*	*	*
1996	5	*	*	*	*	*	*	*	*	*
1997	7	*	*	*	*	*	*	*	*	*
1998	6	*	*	*	*	*	*	*	*	*
1999	6	*	*	*	*	*	*	*	*	*
2000	4	*	*	*	*	*	*	*	*	*
2001	3	*	*	*	*	*	*	*	*	*
2002	6	*	*	*	*	*	*	*	*	*
2003	5	*	*	*	*	*	*	*	*	*
2004	11	*	*	*	*	*	*	*	*	*
2005	8	*	*	*	*	*	*	*	*	*
2006	13	*	*	*	*	*	*	*	*	*
2007	10	*	*	*	*	*	*	*	*	*
2008	14	*	*	*	*	*	*	*	*	*
2009	11	*	*	*	*	*	*	*	*	*
2010	5	*	*	*	*	*	*	*	*	*
2011	8	*	*	*	*	*	*	*	*	*
2012	13	*	*	*	*	*	*	*	*	*

\*N less than 15

\*\* New federal race and ethnicity definitions were introduced in 2010. Figures before and after 2010 may not be directly comparable

Source: MHEC Enrollment and Degree Information Systems

**Trends in Retention and Graduation Rates**  
**ST. MARY'S COLLEGE OF MARYLAND**  
 White Students

Percent enrolled at original campus or graduated from **any** campus after:

Cohort	N	One Year	Two Years	Three Years	Four Years		Five Years		Six Years	
					Enrolled	Graduated	Enrolled	Graduated	Enrolled	Graduated
1991	178	87.1	79.2	75.2	9.0	68.0	0.0	80.9	0.6	82.0
1992	185	89.2	77.8	80.0	15.7	61.6	1.6	78.9	0.0	80.5
1993	226	87.2	73.0	74.8	8.8	64.2	0.4	77.0	0.4	78.3
1994	241	85.5	70.1	68.4	8.7	60.5	2.1	70.9	0.0	73.9
1995	289	87.2	79.9	78.2	13.5	64.0	2.4	77.6	1.7	78.5
1996	265	90.2	84.9	83.8	8.7	72.5	0.8	84.9	0.4	85.2
1997	291	85.9	79.0	77.3	8.2	72.1	1.4	81.1	0.0	82.5
1998	265	84.9	78.1	78.9	10.9	68.7	1.5	77.8	0.0	81.5
1999	226	82.7	76.5	75.6	8.4	68.6	0.9	77.8	1.3	78.7
2000	320	88.4	83.8	83.4	9.4	72.5	1.3	83.8	0.0	85.6
2001	375	93.1	87.5	86.4	5.3	81.0	1.3	86.4	0.0	88.8
2002	338	88.5	81.1	79.6	6.2	73.7	0.3	82.2	0.3	84.6
2003	322	90.4	84.8	80.7	7.1	76.1	2.5	83.5	0.3	86.3
2004	338	89.3	82.0	79.0	5.0	73.4	0.6	82.0	0.3	83.7
2005	369	86.2	81.3	81.3	8.9	72.6	1.1	80.8	0.3	83.5
2006	320	93.1	86.6	84.7	6.6	78.4	0.3	81.9	0.0	83.1
2007	360	90.8	83.3	82.2	4.2	76.1	0.6	83.9	0.3	86.4
2008	359	90.0	84.4	82.2	4.7	77.2	0.6	85.5		
2009	380	85.5	80.8	79.2	6.1	72.6				
2010	334	87.1	78.4	74.3						
2011	348	87.4	81.6							
2012	327	91.4								

\* New federal race and ethnicity definitions were introduced in 2010. Figures before and after 2010 may not be directly comparable

Source: MHEC Enrollment and Degree Information Systems

**Trends in Retention and Graduation Rates**  
**SALISBURY UNIVERSITY**  
 Asian Students

Percent enrolled at original campus or graduated from any campus after:

Cohort	N	One Year	Two Years	Three Years	Four Years		Five Years		Six Years	
					Enrolled	Graduated	Enrolled	Graduated	Enrolled	Graduated
2003	44	75.0	68.2	65.9	22.7	45.5	4.5	65.9	0.0	70.5
2004	25	72.0	60.0	60.0	28.0	44.0	4.0	68.0	0.0	76.0
2005	22	72.7	72.7	68.2	36.4	31.8	9.1	59.1	0.0	68.2
2006	34	79.4	64.7	55.9	14.7	47.1	2.9	55.9	0.0	58.8
2007	42	81.0	57.1	47.6	31.0	21.4	4.8	50.0	0.0	52.4
2008	35	71.4	71.4	65.7	25.7	48.6	5.7	77.1		
2009	36	61.1	63.9	61.1	27.8	22.2				
2010	53	75.5	56.6	54.7						
2011	53	77.4	66.0							
2012	60	70.0								

\* New federal race and ethnicity definitions were introduced in 2010. Figures before and after 2010 may not be directly comparable

Source: MHEC Enrollment and Degree Information Systems

**Trends in Retention and Graduation Rates**  
**UNIVERSITY OF MARYLAND BALTIMORE COUNTY**  
**Asian Students**

Percent enrolled at original campus or graduated from any campus after:

Cohort	N	One Year	Two Years	Three Years	Four Years		Five Years		Six Years	
					Enrolled	Graduated	Enrolled	Graduated	Enrolled	Graduated
1994	110	90.0	69.1	59.1	30.9	25.5	7.3	52.7	4.5	60.0
1995	150	80.0	69.3	64.7	28.0	36.0	8.7	57.3	6.0	66.0
1996	158	88.6	75.9	70.3	37.3	28.5	12.7	54.4	4.4	65.8
1997	226	88.1	76.5	73.5	33.6	34.5	11.9	58.4	6.6	67.7
1998	225	82.2	74.2	65.3	34.2	32.4	11.1	57.3	7.1	68.0
1999	264	82.6	71.6	64.0	37.9	23.1	14.4	52.3	4.2	67.8
2000	244	82.8	69.7	66.8	38.1	28.3	16.0	54.5	4.9	66.8
2001	267	79.4	70.8	65.2	27.3	33.0	12.0	54.3	5.2	65.9
2002	297	76.8	64.6	57.6	30.6	30.0	12.1	54.5	5.1	64.6
2003	337	81.6	68.2	63.2	35.0	28.8	11.6	59.1	5.0	67.4
2004	301	77.4	65.4	59.1	32.6	25.9	11.0	54.5	6.3	62.1
2005	354	80.8	64.7	59.0	31.1	29.1	14.7	51.7	6.5	62.7
2006	380	85.8	67.4	62.9	29.2	35.8	11.6	55.5	5.5	66.8
2007	377	86.5	74.5	68.2	34.0	31.8	8.8	60.2	4.0	68.2
2008	435	85.3	71.7	68.5	34.3	34.5	8.3	60.9		
2009	355	85.9	74.9	70.1	30.1	36.3				
2010	374	86.9	76.7	70.1						
2011	370	86.8	75.7							
2012	404	89.4								

\* New federal race and ethnicity definitions were introduced in 2010. Figures before and after 2010 may not be directly comparable

Source: MHEC Enrollment and Degree Information Systems

**Trends in Retention and Graduation Rates**  
**UNIVERSITY OF MARYLAND COLLEGE PARK**  
**Asian Students**

Percent enrolled at original campus or graduated from any campus after:

Cohort	N	One Year	Two Years	Three Years	Four Years		Five Years		Six Years	
					Enrolled	Graduated	Enrolled	Graduated	Enrolled	Graduated
1994	522	89.3	79.1	74.9	49.6	19.3	14.2	51.0	5.4	62.8
1995	475	90.5	82.1	77.1	39.2	31.6	12.0	59.4	6.1	70.3
1996	428	91.6	87.1	85.0	40.7	35.5	11.9	64.7	3.7	74.8
1997	498	91.8	84.7	80.1	40.0	35.5	11.2	63.9	3.8	74.5
1998	574	92.5	86.2	83.4	48.8	29.8	14.3	62.9	4.0	74.4
1999	500	92.4	85.8	81.2	36.4	40.2	8.0	69.8	3.8	76.6
2000	566	93.5	88.0	85.3	35.2	44.5	6.7	75.3	3.4	82.2
2001	561	94.5	88.8	87.2	31.7	49.6	6.8	76.8	1.8	84.1
2002	467	95.9	90.1	87.6	28.7	56.5	4.5	81.4	1.5	86.1
2003	507	95.1	88.4	87.6	23.3	59.6	2.2	81.9	1.4	86.8
2004	559	96.1	91.2	88.0	25.2	59.4	4.7	82.8	0.9	87.3
2005	541	94.5	89.1	87.1	22.6	60.6	4.3	80.0	1.8	84.3
2006	569	94.4	90.2	89.8	24.8	59.6	5.1	80.8	1.4	84.5
2007	565	95.6	88.0	88.8	24.8	60.2	3.0	83.0	1.6	88.0
2008	575	96.3	92.3	88.5	21.9	65.0	4.9	84.0		
2009	667	96.7	92.8	89.7	21.1	65.7				
2010	622	96.1	91.5	88.6						
2011	622	96.5	94.1							
2012	682	96.6								

\* New federal race and ethnicity definitions were introduced in 2010. Figures before and after 2010 may not be directly comparable

Source: MHEC Enrollment and Degree Information Systems



**Trends in Retention and Graduation Rates**  
**UNIVERSITY OF MARYLAND COLLEGE PARK**  
 Hispanic Students

Percent enrolled at original campus or graduated from any campus after:

Cohort	N	One Year	Two Years	Three Years	Four Years		Five Years		Six Years	
					Enrolled	Graduated	Enrolled	Graduated	Enrolled	Graduated
1994	170	80.6	62.9	60.0	38.2	16.5	12.4	38.2	4.1	52.4
1995	185	84.9	71.9	69.2	42.7	19.5	14.6	47.6	5.9	55.7
1996	189	82.5	76.7	72.5	37.6	26.5	13.2	49.7	4.8	59.8
1997	208	84.1	69.7	69.2	36.1	27.4	9.1	58.2	4.8	64.4
1998	200	88.5	74.5	70.0	33.5	34.0	8.0	59.0	2.5	68.5
1999	206	85.0	74.8	73.3	37.4	30.6	6.3	57.8	2.4	66.5
2000	190	91.1	83.2	82.1	33.7	38.4	6.8	70.0	1.1	77.9
2001	211	86.7	77.7	73.9	36.0	31.8	3.8	63.5	1.4	71.1
2002	212	92.0	82.1	79.7	31.6	44.3	5.7	69.3	2.8	77.4
2003	243	89.7	78.6	77.0	27.6	43.2	6.6	66.7	1.6	74.1
2004	220	90.5	84.5	82.3	27.7	45.5	6.4	70.0	5.0	74.5
2005	249	85.1	78.7	75.9	27.3	45.4	5.6	67.1	1.6	71.5
2006	288	91.0	81.9	80.2	24.3	51.7	5.6	72.2	1.4	77.4
2007	281	92.2	84.0	82.9	23.8	52.3	5.0	72.6	1.8	78.3
2008	251	90.0	86.5	81.3	28.7	50.6	3.2	77.3		
2009	258	94.2	87.6	84.9	27.5	51.6				
2010	295	93.2	85.4	85.4						
2011	359	92.8	86.9							
2012	334	94.3								

\* New federal race and ethnicity definitions were introduced in 2010. Figures before and after 2010 may not be directly comparable

Source: MHEC Enrollment and Degree Information Systems

**Trends in Retention and Graduation Rates**  
**ST. MARY'S COLLEGE OF MARYLAND**  
 Asian Students

Percent enrolled at original campus or graduated from any campus after:

Cohort	N	One Year	Two Years	Three Years	Four Years		Five Years		Six Years	
					Enrolled	Graduated	Enrolled	Graduated	Enrolled	Graduated
1996	15	80	60	53.3	6.7	53.3	6.7	73.3	6.7	73.3
1997	*	*	*	*	*	*	*	*	*	*
1998	16	75.0	75.0	75.0	6.3	68.8	0.0	81.3	0.0	87.5
1999	16	68.8	62.5	56.3	43.8	6.3	12.5	56.3	6.3	62.5
2000	*	*	*	*	*	*	*	*	*	*
2001	20	65.0	60.0	55.0	15.0	50.0	0.0	70.0	0.0	70.0
2002	22	72.7	68.2	68.2	9.1	59.1	4.5	68.2	0.0	77.3
2003	19	94.7	84.2	84.2	5.3	78.9	0.0	89.5	0.0	89.5
2004	17	52.9	52.9	47.1	5.9	58.8	0.0	64.7	0.0	64.7
2005	22	90.9	90.9	90.9	4.5	86.4	0.0	90.9	0.0	90.9
2006	20	80.0	70.0	70.0	5.0	70.0	0.0	75.0	0.0	80.0
2007	*	*	*	*	*	*	*	*	*	*
2008	16	93.8	87.5	81.3	12.5	81.3	0.0	93.8		
2009	20	95.0	95.0	90.0	10.0	70.0				
2010	29	86.2	65.5	62.1						
2011	18	88.9	72.2							
2012	22	90.9								

\* New federal race and ethnicity definitions were introduced in 2010. Figures before and after 2010 may not be directly comparable

Source: MHEC Enrollment and Degree Information Systems

**Trends in Retention and Graduation Rates**  
**ST. MARY'S COLLEGE OF MARYLAND**  
 Hispanic Students

Percent enrolled at original campus or graduated from any campus after:

Cohort	N	One Year	Two Years	Three Years	Four Years		Five Years		Six Years	
					Enrolled	Graduated	Enrolled	Graduated	Enrolled	Graduated
2005	24	91.7	83.3	79.2	20.8	54.2	8.3	70.8	0.0	75.0
2006	29	86.2	79.3	75.9	6.9	65.5	3.5	69.0	0.0	69.0
2007	19	73.7	73.7	68.4	15.8	47.4	0.0	52.6	0.0	57.9
2008	22	90.9	81.8	77.3	18.2	63.6	0.0	90.9		
2009	16	93.8	81.3	81.3	18.8	56.3				
2010	28	92.9	82.1	82.1						
2011	16	93.8	93.8							
2012	21	85.7								

\* New federal race and ethnicity definitions were introduced in 2010. Figures before and after 2010 may not be directly comparable

Source: MHEC Enrollment and Degree Information Systems

# **INSTITUTIONAL TRENDS IN RETENTION AND GRADUATION RATES**

## **BY GENDER**

**Trends in Retention and Graduation Rates**  
**BOWIE STATE UNIVERSITY**  
**Male Students**

Percent enrolled at original campus or graduated from **any** campus after:

Cohort	N	One Year	Two Years	Three Years	Four Years		Five Years		Six Years	
					Enrolled	Graduated	Enrolled	Graduated	Enrolled	Graduated
1991	163	71.2	54.6	44.8	37.4	6.1	14.7	23.3	6.1	31.3
1992	166	63.3	49.4	40.4	31.9	4.2	15.1	16.3	8.4	25.3
1993	157	56.1	48.4	38.9	34.4	7.0	14.6	17.2	6.4	26.1
1994	147	66.0	55.1	49.0	34.7	5.4	21.8	20.4	8.8	33.3
1995	186	68.8	54.3	50.5	37.1	7.0	17.7	25.3	8.6	34.9
1996	132	65.9	53.8	49.3	37.9	6.8	16.7	23.5	6.1	29.5
1997	169	66.3	57.4	50.9	43.2	5.3	20.1	23.1	11.8	31.4
1998	194	65.5	51.0	45.9	36.6	5.1	19.1	22.2	9.8	31.4
1999	154	68.8	55.1	45.5	34.4	7.8	23.4	18.8	6.5	27.9
2000	167	68.9	60.5	49.1	38.9	7.2	19.8	24.0	7.8	32.9
2001	241	72.6	50.6	44.4	32.0	9.1	17.8	21.6	8.7	30.7
2002	219	68.5	55.7	52.5	37.0	11.9	14.2	29.7	8.2	37.0
2003	284	71.1	57.0	47.2	36.3	7.4	12.0	28.9	4.6	37.0
2004	219	74.9	53.9	46.1	37.0	7.3	19.2	23.7	10.0	32.0
2005	356	66.0	54.5	48.6	30.9	15.4	13.8	31.5	10.1	36.8
2006	290	70.3	50.7	44.1	33.8	7.2	16.6	22.4	7.9	28.3
2007	314	66.2	51.6	42.7	32.8	6.7	15.9	19.4	9.2	27.7
2008	322	69.6	51.2	44.7	30.4	5.6	15.2	23.0		
2009	269	63.9	51.3	45.0	33.8	8.2				
2010	285	70.2	53.0	43.5						
2011	254	67.3	51.2							
2012	181	67.4								

Source: MHEC Enrollment and Degree Information Systems

**Trends in Retention and Graduation Rates**  
**COPPIN STATE UNIVERSITY**  
**Male Students**

Percent enrolled at original campus or graduated from **any** campus after:

Cohort	N	One Year	Two Years	Three Years	Four Years		Five Years		Six Years	
					Enrolled	Graduated	Enrolled	Graduated	Enrolled	Graduated
1991	116	54.3	38.8	32.8	15.5	6.1	7.8	10.4	5.2	13.8
1992	167	62.3	32.3	25.1	16.2	0.6	10.2	7.8	7.8	11.4
1993	236	54.2	26.7	22.4	16.1	2.5	8.9	7.2	4.2	10.6
1994	129	55.8	38.8	33.3	24.8	5.4	11.6	12.5	7.8	18.7
1995	136	69.1	55.9	47.8	34.6	5.9	22.1	14.7	9.6	23.5
1996	157	62.4	45.9	37.5	24.8	6.4	12.1	17.2	3.8	26.1
1997	115	69.6	47.0	38.3	30.4	2.6	20.0	8.7	13.0	13.0
1998	120	70.0	48.3	40.0	30.0	8.3	14.2	15.8	8.3	20.0
1999	135	63.7	43.7	31.1	17.0	8.9	11.1	14.9	4.4	19.2
2000	128	65.6	43.8	34.4	19.5	3.9	12.5	7.9	5.5	12.5
2001	156	66.7	42.3	29.4	21.8	3.9	12.2	9.0	4.5	14.7
2002	149	70.5	43.6	31.5	23.5	2.0	10.1	10.7	6.0	12.8
2003	139	66.2	51.8	31.6	23.7	6.5	12.2	13.7	5.0	20.1
2004	150	62.0	46.0	30.7	25.3	5.3	15.3	10.7	8.7	16.0
2005	167	57.5	35.3	26.3	18.0	2.4	10.2	10.8	7.2	15.0
2006	109	63.3	34.9	27.5	23.9	2.8	16.5	10.1	9.2	12.8
2007	140	57.1	40.0	30.0	22.9	7.1	15.0	10.0	5.0	18.6
2008	154	60.4	30.7	29.9	20.1	3.9	8.4	10.4		
2009	159	54.1	37.1	29.6	20.8	1.3				
2010	159	60.4	40.3	32.7						
2011	157	62.4	44.6							
2012	142	57.0								

Source: MHEC Enrollment and Degree information Systems

**Trends in Retention and Graduation Rates**  
**FROSTBURG STATE UNIVERSITY**  
 Male Students

Percent enrolled at original campus or graduated from any campus after:

Cohort	N	One Year	Two Years	Three Years	Four Years		Five Years		Six Years	
					Enrolled	Graduated	Enrolled	Graduated	Enrolled	Graduated
1991	383	70.8	59.3	55.1	33.4	18.0	8.9	42.3	1.6	52.8
1992	387	70.8	58.7	51.7	31.8	16.6	4.9	46.2	2.3	54.7
1993	476	70.8	56.7	52.9	31.1	17.9	7.1	43.9	1.5	51.3
1994	385	67.3	57.1	53.0	34.5	16.3	7.3	47.0	2.9	53.5
1995	476	67.9	52.3	46.8	29.4	15.8	5.5	44.7	1.7	52.5
1996	495	66.7	53.3	49.1	31.5	15.5	7.5	42.1	2.2	49.3
1997	423	66.0	53.7	53.4	31.2	18.0	7.6	42.8	3.3	48.3
1998	448	68.1	56.3	52.9	32.4	16.0	8.9	40.9	2.5	50.9
1999	427	71.0	57.8	51.8	32.6	14.3	10.1	36.1	0.9	47.7
2000	531	66.5	53.7	49.2	32.0	14.1	6.4	39.2	2.6	46.3
2001	453	73.7	58.5	52.9	31.8	14.7	4.9	44.8	0.4	53.4
2002	507	65.5	53.1	48.1	28.6	14.6	7.9	39.1	2.4	48.5
2003	538	70.1	58.9	54.1	32.5	18.2	7.4	47.6	2.6	55.0
2004	530	67.9	58.1	51.5	33.4	17.2	8.7	43.2	2.5	52.1
2005	481	66.3	51.6	49.5	31.8	14.6	8.7	38.5	2.3	45.9
2006	552	62.3	51.8	48.7	30.4	13.9	7.8	36.6	2.9	44.9
2007	539	73.1	58.4	54.2	28.9	18.7	8.9	40.6	2.2	53.2
2008	552	68.7	56.7	51.8	31.0	17.4	5.8	44.6		
2009	524	68.9	55.9	51.5	32.8	15.6				
2010	556	68.7	58.3	51.3						
2011	420	69.0	55.7							
2012	451	73.4								

Source: MHEC Enrollment and Degree Information Systems

**Trends in Retention and Graduation Rates**  
**SALISBURY UNIVERSITY**  
**Male Students**

Percent enrolled at original campus or graduated from **any** campus after:

Cohort	N	One Year	Two Years	Three Years	Four Years		Five Years		Six Years	
					Enrolled	Graduated	Enrolled	Graduated	Enrolled	Graduated
1991	324	77.2	67.3	61.1	27.2	31.2	8.0	52.8	2.2	59.2
1992	262	83.2	69.1	64.1	30.9	30.6	9.9	55.0	2.3	64.9
1993	321	75.7	61.4	59.5	27.4	29.0	8.4	50.8	2.2	57.3
1994	283	77.7	67.1	65.4	24.0	41.4	4.9	62.2	0.7	67.9
1995	230	82.2	70.9	71.3	22.2	46.1	3.9	67.3	1.7	70.9
1996	313	81.5	70.3	64.8	32.3	33.6	8.0	60.7	2.6	66.4
1997	372	79.0	68.8	66.4	28.8	36.1	4.6	59.9	1.3	65.3
1998	401	77.1	68.8	67.3	28.4	35.9	4.2	61.1	0.7	66.3
1999	340	81.2	72.7	70.3	22.1	43.8	3.5	65.9	1.8	68.8
2000	394	81.2	72.9	70.8	26.9	41.9	7.4	62.9	1.3	68.3
2001	403	77.4	68.7	66.3	28.0	34.8	4.2	61.3	1.2	66.7
2002	379	74.9	66.2	64.1	29.3	33.5	7.4	57.8	1.6	65.4
2003	416	79.3	68.3	65.4	25.5	36.3	7.2	58.9	2.4	64.9
2004	446	80.5	71.9	69.3	30.9	34.5	4.0	64.3	0.7	71.5
2005	431	78.4	68.7	65.2	24.8	35.5	3.7	58.2	1.6	64.7
2006	440	77.0	70.0	67.0	23.9	40.9	5.9	62.7	1.8	67.7
2007	497	81.7	68.8	65.8	27.6	35.6	6.0	59.4	3.0	64.6
2008	506	73.3	66.0	61.5	28.3	31.0	4.3	57.3		
2009	538	75.1	64.3	62.6	25.3	34.6				
2010	480	78.1	68.5	66.0						
2011	506	82.6	74.9							
2012	498	77.9								

Source: MHEC Enrollment and Degree Information Systems



**Trends in Retention and Graduation Rates**  
**TOWSON UNIVERSITY**  
**Male Students**

Percent enrolled at original campus or graduated from **any** campus after:

Cohort	N	One Year	Two Years	Three Years	Four Years		Five Years		Six Years	
					Enrolled	Graduated	Enrolled	Graduated	Enrolled	Graduated
1991	503	75.9	68.4	61.0	42.1	14.3	13.1	41.4	5.2	51.5
1992	511	82.0	70.6	65.0	37.6	19.6	10.8	49.9	4.1	56.7
1993	494	77.5	68.6	63.0	42.1	17.0	9.9	47.1	4.3	53.8
1994	525	78.7	68.2	63.1	42.5	16.0	12.8	42.7	4.4	51.6
1995	554	78.2	70.8	65.7	38.4	22.3	8.7	49.1	3.4	56.0
1996	726	75.5	67.1	61.9	38.2	18.3	10.5	43.1	5.4	50.8
1997	732	79.5	69.7	61.9	34.0	23.1	12.6	45.9	5.7	52.5
1998	751	79.6	70.7	65.6	36.5	25.1	10.4	50.1	4.3	55.4
1999	831	77.7	70.5	65.4	36.6	22.2	11.8	44.9	4.7	52.5
2000	786	79.9	73.4	67.1	37.4	24.0	10.7	50.1	3.9	58.7
2001	665	83.9	73.7	69.9	39.4	25.1	8.9	54.1	4.2	61.8
2002	815	82.8	74.0	70.2	36.9	28.1	9.3	57.2	2.8	64.8
2003	565	82.6	77.5	74.1	35.5	32.8	8.1	62.3	3.2	69.3
2004	708	80.6	74.0	70.3	34.7	31.9	9.9	58.3	3.4	67.8
2005	863	78	68.8	64.9	32.0	31.4	10.1	56.2	4.4	63.5
2006	994	80.0	73.3	69.4	35.3	30.1	9.8	58.2	3.1	68.2
2007	984	80.4	72.5	69.6	35.8	30.7	9.6	56.4	3.9	63.5
2008	1,041	82.2	76.0	72.9	32.5	34.5	8.5	59.2		
2009	833	83.6	77.0	71.7	36.1	32.2				
2010	835	82.8	74.5	71.5						
2011	903	83.9	76.6							
2012	821	85.7								

Source: MHEC Enrollment and Degree Information Systems

Trends in Retention and Graduation Rates  
**UNIVERSITY OF BALTIMORE**  
 Male Students

Percent enrolled at original campus or graduated from **any** campus after:

Cohort	N	One Year	Two Years	Three Years	Four Years		Five Years		Six Years	
					Enrolled	Graduated	Enrolled	Graduated	Enrolled	Graduated
2007	67	68.7	55.2	44.8	16.4	17.9	9.0	32.8	1.5	37.3
2008	86	87.2	69.8	68.6	44.2	19.8	19.8	46.5		
2009	77	76.6	55.8	50.6	31.2	15.6				
2010	81	76.5	53.1	56.8						
2011	76	69.7	50.0							
2012	95	65.3								

Source: MHEC Enrollment and Degree Information Systems

Trends in Retention and Graduation Rates  
**UNIVERSITY OF MARYLAND BALTIMORE COUNTY**  
 Male Students

Percent enrolled at original campus or graduated from **any** campus after:

Cohort	N	One Year	Two Years	Three Years	Four Years		Five Years		Six Years	
					Enrolled	Graduated	Enrolled	Graduated	Enrolled	Graduated
1991	439	77.7	64.5	60.1	39.9	14.4	16.9	37.1	7.3	48.8
1992	444	84.9	68.9	59.7	39.6	16.5	12.6	42.6	5.0	51.4
1993	505	80.0	66.7	59.6	37.6	18.4	13.1	42.7	4.4	55.0
1994	386	81.3	66.1	59.6	36.0	17.9	9.8	45.6	5.4	54.2
1995	480	79.8	66.7	62.3	34.4	23.0	10.4	47.9	5.6	55.6
1996	500	83.4	71.4	64.8	36.8	21.0	12.6	44.8	6.2	54.0
1997	531	84.0	70.3	65.1	35.6	25.6	9.4	48.4	4.0	56.2
1998	638	83.5	68.8	62.2	36.7	20.4	12.5	45.0	6.0	55.8
1999	762	78.7	64.7	61.2	32.4	24.0	10.9	47.9	4.2	57.8
2000	706	82.0	68.0	63.9	37.0	22.5	12.2	47.8	5.7	56.8
2001	730	80.7	69.9	65.5	32.5	27.2	9.6	52.0	5.1	60.3
2002	784	80.7	71.0	65.4	37.5	24.7	12.2	51.1	6.1	60.8
2003	831	80.3	68.1	65.2	35.4	26.0	11.8	51.5	5.4	61.1
2004	843	79.6	67.4	62.5	29.3	29.9	9.0	54.6	4.2	62.3
2005	831	80.9	66.9	63.5	32.6	29.1	11.4	53.4	5.8	60.9
2006	793	82.6	70.6	67.8	35.4	28.6	13.1	51.2	5.3	62.2
2007	769	85.6	74.3	70.2	37.6	27.4	10.5	55.4	5.6	63.2
2008	907	82.8	69.8	64.6	36.6	24.9	10.8	52.4		
2009	867	80.6	69.6	65.6	32.8	28.7				
2010	894	81.9	72.0	66.9						
2011	826	81.6	69.1							
2012	924	82.6								

Source: MHEC Enrollment and Degree Information Systems

**Trends in Retention and Graduation Rates**  
**UNIVERSITY OF MARYLAND COLLEGE PARK**  
**Male Students**

Percent enrolled at original campus or graduated from **any** campus after:

Cohort	N	One Year	Two Years	Three Years	Four Years		Five Years		Six Years	
					Enrolled	Graduated	Enrolled	Graduated	Enrolled	Graduated
1991	1,655	79.8	69.2	65.7	43.8	17.4	12.4	48.0	4.5	57.4
1992	1,570	81.9	72.9	69.8	43.6	20.5	14.1	47.6	4.5	58.9
1993	1,693	83.3	74.2	69.1	41.3	21.5	12.3	48.8	4.9	57.9
1994	1,914	82.4	72.7	67.3	39.8	20.3	10.9	48.6	4.0	58.0
1995	1,860	85.0	73.9	70.2	38.2	25.0	11.6	50.9	4.7	60.0
1996	1,842	86.7	76.0	73.3	38.6	28.5	10.5	56.2	3.6	64.3
1997	2,095	86.3	77.2	73.1	35.6	31.2	8.8	57.5	2.5	65.7
1998	2,051	89.2	80.2	76.4	35.7	35.0	8.4	61.9	2.9	69.0
1999	2,102	88.7	81.5	78.6	34.6	37.2	6.3	66.0	2.4	72.4
2000	2,051	89.3	82.4	79.2	32.8	40.0	6.4	68.4	2.5	75.0
2001	2,289	90.6	83.8	80.9	28.1	46.1	5.4	70.3	1.5	76.8
2002	1,935	92.4	85.5	83.7	23.8	53.4	3.9	75.6	1.7	80.0
2003	2,021	91.8	85.3	84.1	24.5	52.0	3.6	76.1	1.1	80.3
2004	2,124	91.0	85.1	82.6	25.5	50.8	3.8	74.5	1.7	79.0
2005	2,115	90.9	84.3	81.9	20.6	56.0	3.7	74.7	1.4	78.6
2006	2,048	91.7	84.8	83.3	24.1	53.5	5.3	73.8	2.0	78.1
2007	2,198	92.7	86.0	84.8	23.8	54.4	4.0	76.7	1.8	81.3
2008	2,078	92.3	88.0	84.1	21.5	58.1	4.1	78.6		
2009	2,257	94.1	88.9	85.5	21.8	58.8				
2010	2,069	93.9	88.3	85.5						
2011	2,112	92.9	87.4							
2012	2,064	94.2								

Source: MHEC Enrollment and Degree Information Systems

**Trends in Retention and Graduation Rates**  
**UNIVERSITY OF MARYLAND EASTERN SHORE**  
**Male Students**

Percent enrolled at original campus or graduated from **any** campus after:

Cohort	N	One Year	Two Years	Three Years	Four Years		Five Years		Six Years	
					Enrolled	Graduated	Enrolled	Graduated	Enrolled	Graduated
1991	261	69.0	45.2	37.9	19.2	7.3	6.5	20.3	1.1	26.1
1992	256	62.5	50.0	34.4	16.4	10.5	5.9	18.8	1.6	25.0
1993	220	68.6	46.8	39.2	24.5	11.9	4.5	27.2	1.4	35.9
1994	355	55.5	40.8	36.1	22.0	9.3	4.5	23.4	1.1	28.5
1995	266	74.8	55.3	44.4	26.3	12.8	6.8	32.7	3.8	39.1
1996	273	72.9	59.0	44.7	24.5	18.0	7.0	36.6	2.2	43.6
1997	253	79.1	62.8	53.0	27.3	18.6	7.7	39.6	2.0	47.8
1998	237	71.3	57.0	47.7	25.7	23.2	5.1	40.1	2.1	46.9
1999	226	73.9	56.2	50.0	27.0	18.2	8.4	39.4	1.3	46.1
2000	286	64.3	51.3	46.5	26.9	11.9	8.7	26.2	3.8	31.4
2001	453	71.3	57.4	48.6	24.7	16.4	5.7	32.9	3.1	38.2
2002	364	71.7	54.7	48.1	28.0	17.3	8.5	34.9	3.3	40.9
2003	378	66.1	43.7	38.1	22.0	13.5	7.1	28.8	3.2	33.3
2004	364	57.7	47.5	39.6	24.7	11.5	11.3	22.8	3.6	29.7
2005	362	62.4	44.5	38.4	22.9	8.8	10.2	21.0	4.4	26.8
2006	410	67.3	51.5	46.6	30.7	9.3	14.9	22.7	4.9	33.9
2007	315	63.8	45.1	40.3	32.4	5.1	12.1	22.2	3.5	29.5
2008	377	65.0	49.3	42.2	24.7	13.5	8.8	27.6		
2009	351	65.0	53.3	46.7	31.1	9.4				
2010	379	65.4	53.8	46.4						
2011	310	66.8	53.2							
2012	352	67.9								

Source: MHEC Enrollment and Degree information Systems

Trends in Retention and Graduation Rates  
**MORGAN STATE UNIVERSITY**  
 Male Students

Percent enrolled at original campus or graduated from **any** campus after:

Cohort	N	One Year	Two Years	Three Years	Four Years		Five Years		Six Years	
					Enrolled	Graduated	Enrolled	Graduated	Enrolled	Graduated
1991	423	64.1	48.5	43.5	31.0	7.8	15.4	21.7	4.7	29.5
1992	474	75.5	53.8	49.3	35.2	8.2	18.6	21.3	8.2	28.4
1993	450	71.1	59.8	49.3	35.3	6.7	16.4	24.7	8.4	30.4
1994	412	74.5	57.8	45.9	33.3	7.5	12.4	22.3	6.1	30.6
1995	425	67.5	50.6	45.2	32.0	8.2	14.4	21.2	7.3	28.2
1996	415	68.0	53.5	45.5	33.0	7.7	17.1	21.0	9.6	28.9
1997	493	74.2	57.8	48.7	38.3	6.3	17.4	20.5	7.9	29.0
1998	478	70.9	54.6	46.6	31.8	8.6	13.4	24.0	8.2	32.3
1999	497	73.2	59.0	49.7	36.8	8.4	17.5	25.3	9.7	34.6
2000	420	73.8	58.5	51.5	31.9	14.3	15.2	29.3	5.2	38.8
2001	464	70.7	57.7	48.0	33.4	8.2	14.2	23.2	7.3	29.7
2002	508	66.9	54.1	46.1	34.4	5.3	17.9	17.3	8.5	24.4
2003	525	71.0	54.5	47.2	35.2	6.5	17.1	20.8	9.9	28.4
2004	585	67.0	52.7	45.5	35.2	5.5	17.4	17.9	8.9	26.2
2005	346	67.1	53.2	45.4	29.8	5.8	19.4	15.3	10.4	23.2
2006	595	56.6	45.7	35.6	25.2	8.1	12.3	18.5	6.1	24.4
2007	595	66.9	48.1	42.9	31.9	7.4	16.0	19.2	7.4	27.6
2008	623	65.2	51.2	45.9	31.5	7.5	14.8	19.9		
2009	546	66.5	49.6	41.9	31.7	7.1				
2010	554	71.7	59.0	49.5						
2011	467	68.7	55.7							
2012	436	73.4								

Source: MHEC Enrollment and Degree Information Systems

**Trends in Retention and Graduation Rates**  
**ST. MARY'S COLLEGE OF MARYLAND**  
 Male Students

Percent enrolled at original campus or graduated from **any** campus after:

Cohort	N	One Year	Two Years	Three Years	Four Years		Five Years		Six Years	
					Enrolled	Graduated	Enrolled	Graduated	Enrolled	Graduated
1991	95	84.2	75.8	69.5	15.8	54.8	2.1	73.7	1.1	75.8
1992	101	91.1	76.2	79.2	17.8	52.5	3.0	72.3	0.0	74.3
1993	132	79.5	69.7	69.7	12.9	52.3	0.0	73.5	0.0	74.3
1994	120	83.3	65.0	60.8	10.0	52.5	2.5	64.2	0.0	69.2
1995	151	87.4	80.1	78.1	20.5	56.9	2.0	78.2	2.0	80.1
1996	141	90.8	85.1	84.4	13.5	68.1	1.4	85.1	0.7	85.8
1997	156	85.3	76.9	73.1	10.9	62.8	0.6	74.3	0.0	75.7
1998	151	81.5	71.5	72.8	19.2	51.7	3.3	66.2	0.7	72.2
1999	124	78.2	70.2	65.3	7.3	56.4	1.6	66.1	1.6	66.9
2000	156	85.9	81.4	81.4	16.0	61.6	1.3	77.6	0.0	79.5
2001	169	91.7	84.6	82.2	10.7	68.7	3.0	79.3	0.6	83.4
2002	182	84.6	76.9	74.2	10.4	63.1	0.5	74.2	0.5	78.6
2003	171	88.3	83.6	80.7	15.2	63.7	4.1	76.0	1.2	79.5
2004	198	85.9	75.8	71.2	8.6	63.6	1.0	75.3	0.5	77.3
2005	193	89.6	82.9	83.9	16.1	67.9	2.6	80.8	0.5	83.9
2006	179	91.1	82.1	79.3	7.8	67.0	1.1	71.0	0.0	72.6
2007	208	88.5	79.8	77.4	8.7	65.4	0.5	77.9	0.0	84.8
2008	178	91.0	85.4	81.5	11.2	68.0	1.7	78.7		
2009	214	84.6	76.6	75.7	12.1	59.3				
2010	165	88.5	78.8	73.9						
2011	179	82.1	74.9							
2012	154	90.3								

Source: MHEC Enrollment and Degree Information Systems

**Trends in Retention and Graduation Rates**  
**BOWIE STATE UNIVERSITY**  
 Female Students

Percent enrolled at original campus or graduated from **any** campus after:

Cohort	N	One Year	Two Years	Three Years	Four Years		Five Years		Six Years	
					Enrolled	Graduated	Enrolled	Graduated	Enrolled	Graduated
1991	220	77.7	65.9	60.4	37.7	15.9	15.9	36.8	6.4	44.5
1992	239	80.3	65.3	59.4	40.2	13.4	15.9	35.6	7.5	46.9
1993	204	72.5	59.3	52.0	35.8	13.7	11.8	34.4	7.4	40.6
1994	222	79.7	65.8	60.4	37.4	18.9	12.6	41.9	8.6	48.2
1995	277	76.9	61.0	52.7	35.0	19.1	14.4	37.9	6.1	44.4
1996	173	74.6	65.3	60.1	34.7	20.3	12.7	41.1	8.7	46.9
1997	191	74.9	65.4	53.4	33.0	19.3	9.4	37.6	3.7	46.6
1998	225	80.0	59.1	56.4	33.8	20.5	14.7	40.0	8.0	49.4
1999	189	73.0	63.0	55.0	37.6	20.1	13.8	44.4	6.3	51.4
2000	196	76.5	63.3	56.1	35.2	17.3	15.3	36.2	7.1	44.9
2001	358	76.3	63.7	59.2	33.8	19.6	12.8	38.9	6.1	46.6
2002	357	70.6	63.5	57.7	28.3	23.8	8.4	43.4	4.8	49.9
2003	482	73.6	62.0	54.3	33.6	17.8	12.0	38.4	4.1	46.9
2004	408	77.9	63.7	56.6	33.6	19.6	15.2	36.5	7.8	45.8
2005	567	75.3	61.7	57.5	28.4	27.5	13.9	41.4	6.7	48.1
2006	475	70.3	55.8	52.2	36.4	14.1	15.6	33.1	5.5	42.5
2007	506	71.5	59.9	51.0	32.2	18.2	12.6	35.8	5.1	45.5
2008	451	71.6	58.1	52.7	36.1	11.5	13.7	35.0		
2009	437	74.4	61.6	57.4	41.2	13.7				
2010	386	75.9	58.8	53.1						
2011	369	74.0	60.4							
2012	296	72.0								

Source: MHEC Enrollment and Degree Information Systems



**Trends in Retention and Graduation Rates**  
**COPPIN STATE UNIVERSITY**  
 Female Students

Percent enrolled at original campus or graduated from **any** campus after:

Cohort	N	One Year	Two Years	Three Years	Four Years		Five Years		Six Years	
					Enrolled	Graduated	Enrolled	Graduated	Enrolled	Graduated
1991	195	74.4	63.1	57.9	40.5	11.8	19.0	25.1	10.3	34.8
1992	182	82.4	63.7	52.1	39.6	8.7	19.2	21.9	12.1	30.2
1993	264	73.9	53.0	43.9	33.3	7.6	17.8	19.0	9.8	26.1
1994	255	69.8	53.3	46.7	35.3	6.3	18.0	17.6	10.6	28.6
1995	303	73.6	54.5	47.2	32.7	7.6	19.5	19.8	8.9	27.7
1996	357	72.8	57.7	50.4	40.6	6.2	22.7	19.3	11.5	30.8
1997	268	73.1	56.0	48.9	38.4	5.2	18.7	20.5	9.3	28.0
1998	337	73.0	55.2	46.9	33.2	6.8	18.4	20.8	9.2	28.8
1999	306	71.2	52.3	43.8	28.1	9.5	13.7	21.2	8.8	27.1
2000	289	73.7	52.9	42.5	31.1	5.9	16.6	16.6	8.0	24.2
2001	384	70.8	47.4	41.7	24.5	9.1	13.5	20.3	7.0	25.0
2002	430	68.4	50.2	39.5	27.0	7.0	13.3	16.5	6.7	20.2
2003	432	65.0	48.3	38.7	26.4	4.6	12.0	12.3	9.7	16.7
2004	451	63.4	43.9	37.0	26.8	5.1	14.9	12.0	8.6	19.1
2005	522	65.3	41.0	34.5	23.0	4.8	11.3	14.6	6.7	19.0
2006	399	58.9	45.6	38.1	25.1	6.3	14.3	15.3	6.8	21.6
2007	430	58.8	36.7	33.0	24.7	3.7	14.7	10.9	8.4	15.1
2008	451	62.3	44.6	37.9	27.5	4.9	15.1	13.3		
2009	407	62.9	46.4	36.6	23.8	7.1				
2010	366	65.0	39.3	31.1						
2011	329	66.9	47.4							
2012	288	63.5								

Source: MHEC Enrollment and Degree Information Systems

**Trends in Retention and Graduation Rates**  
**FROSTBURG STATE UNIVERSITY**  
 Female Students

Percent enrolled at original campus or graduated from any campus after:

Cohort	N	One Year	Two Years	Three Years	Four Years		Five Years		Six Years	
					Enrolled	Graduated	Enrolled	Graduated	Enrolled	Graduated
1991	380	76.6	67.4	63.2	25.3	33.7	4.2	61.3	0.8	67.6
1992	453	80.4	65.3	61.2	22.1	38.2	2.0	65.6	0.4	70.2
1993	434	70.7	62.2	57.1	26.5	27.2	5.5	54.6	1.4	62.4
1994	426	73.5	63.8	57.8	27.2	31.0	4.5	59.4	1.6	65.5
1995	437	74.4	62.5	57.7	25.4	31.3	6.6	57.2	1.6	65.9
1996	483	74.5	61.2	56.9	28.6	28.8	4.1	59.6	1.2	63.8
1997	446	78.7	66.2	61.6	24.9	34.6	3.8	62.8	1.3	67.9
1998	489	76.5	61.8	56.8	29.9	25.5	3.5	55.6	1.2	62.8
1999	512	76.2	62.5	58.2	31.1	24.2	3.9	55.8	1.2	62.3
2000	500	73.4	63.2	61.1	27.2	29.2	4.8	57.4	1.0	64.2
2001	474	77.6	66.0	61.6	26.2	31.0	3.0	58.4	1.1	64.1
2002	494	75.1	65.0	59.9	22.9	34.2	4.0	60.5	1.4	66.2
2003	452	78.1	63.7	60.1	25.0	31.4	4.2	60.8	0.7	66.8
2004	429	73.7	62.0	58.5	25.4	32.4	4.0	58.0	2.1	61.5
2005	448	77.5	62.5	59.6	27.9	28.6	5.4	54.5	1.6	60.5
2006	461	73.5	61.8	57.3	26.9	26.2	3.9	54.7	1.5	61.4
2007	520	75.6	61.7	55.8	25.2	28.7	4.0	53.8	1.5	59.0
2008	478	75.7	61.3	57.5	29.5	25.5	3.3	53.3		
2009	507	78.9	67.7	62.5	29.0	31.8				
2010	472	73.3	61.4	56.4						
2011	405	75.3	64.9							
2012	363	81.0								

Source: MHEC Enrollment and Degree Information Systems

**Trends in Retention and Graduation Rates**  
**SALISBURY UNIVERSITY**  
**Female Students**

Percent enrolled at original campus or graduated from **any** campus after:

Cohort	N	One Year	Two Years	Three Years	Four Years		Five Years		Six Years	
					Enrolled	Graduated	Enrolled	Graduated	Enrolled	Graduated
1991	387	80.9	69.3	67.7	15.2	52.4	1.6	66.9	0.8	70.3
1992	372	82.3	72.8	67.2	14.8	52.2	1.9	69.9	1.9	71.2
1993	405	80.5	70.1	66.7	14.8	53.1	1.5	69.1	0.7	72.1
1994	397	78.8	68.5	66.5	13.4	56.4	2.0	69.5	0.8	72.6
1995	412	83.7	76.9	73.0	16.5	56.8	2.7	71.8	1.5	75.5
1996	421	85.0	76.3	70.8	14.3	54.6	2.6	71.7	1.2	74.1
1997	516	84.1	75.7	74.0	16.1	57.9	2.7	76.9	1.9	78.7
1998	534	83.9	76.4	72.8	15.5	57.3	1.1	74.8	0.6	77.6
1999	538	82.9	77.7	73.6	14.7	59.5	2.2	73.4	0.6	75.6
2000	546	83.9	77.8	74.0	13.6	63.2	1.5	77.8	0.5	80.0
2001	542	84.3	76.6	76.0	17.7	56.8	2.4	76.5	0.4	80.3
2002	529	83.7	78.7	77.3	18.3	58.0	2.3	77.7	0.6	81.7
2003	532	82.5	74.6	75.2	16.2	57.3	2.3	74.8	0.9	78.0
2004	537	84.9	77.1	73.7	14.9	61.3	1.9	77.8	0.4	80.8
2005	525	83.6	76.2	75.6	14.7	59.4	3.2	73.9	0.8	77.1
2006	588	83.3	76.7	74.8	15.5	58.7	3.2	73.5	0.7	77.0
2007	647	83.5	76.2	73.1	15.2	59.2	1.1	77.0	0.8	79.8
2008	695	84.7	77.6	74.2	16.1	56.8	1.3	76.5		
2009	741	84.3	79.1	73.3	16.2	57.0				
2010	773	84.5	77.5	74.3						
2011	746	83.5	75.3							
2012	733	80.4								

Source: MHEC Enrollment and Degree Information Systems

**Trends in Retention and Graduation Rates**  
**TOWSON UNIVERSITY**  
**Female Students**

Percent enrolled at original campus or graduated from **any** campus after:

Cohort	N	One Year	Two Years	Three Years	Four Years		Five Years		Six Years	
					Enrolled	Graduated	Enrolled	Graduated	Enrolled	Graduated
1991	734	83.4	72.8	69.7	31.9	33.2	8.3	60.1	3.5	66.7
1992	823	81.9	73.3	69.4	33.3	33.5	8.6	60.4	3.4	67.2
1993	720	81.5	72.5	69.2	32.1	34.5	7.5	61.5	2.6	67.9
1994	810	82.7	71.5	67.7	32.6	32.7	8.6	58.9	3.6	64.0
1995	934	83.2	75.1	72.7	31.2	38.3	6.6	64.4	2.2	69.5
1996	1,131	83.5	73.9	71.4	31.4	35.2	5.7	62.0	2.6	66.4
1997	1,080	83.1	73.9	71.4	28.4	37.0	7.9	59.8	3.1	64.7
1998	1,180	84.8	76.3	72.5	34.6	34.9	8.1	62.4	3.0	69.3
1999	1,284	83.2	73.4	71.2	31.3	36.4	8.6	60.0	3.0	66.0
2000	1,201	83.5	76.7	72.8	31.4	37.2	6.8	62.9	1.7	68.9
2001	1,247	84.2	77.2	74.7	30.2	41.1	5.8	66.3	2.0	71.5
2002	1,388	84.4	75.5	73.3	27.0	44.3	5.5	69.2	2.4	73.8
2003	1,190	85.3	80.5	78.1	25.9	50.2	3.9	73.4	1.3	77.9
2004	1,377	82.9	77.1	73.9	29.6	43.4	5.6	69.4	2.2	75.0
2005	1,459	79.9	74.8	71.6	26.4	44.5	6.3	66.9	3.2	71.1
2006	1,698	81.4	75.0	71.6	26.5	43.9	6.2	66.0	1.7	70.9
2007	1,673	81.1	73.5	71.2	25.0	45.3	6.1	66.2	1.7	70.6
2008	1,788	83.4	76.6	73.5	27.1	45.6	6.0	69.0		
2009	1,565	85.2	78.9	76.2	25.3	50.9				
2010	1,593	84.0	78.6	75.6						
2011	1,642	86.3	80.8							
2012	1,642	86.1								

Source: MHEC Enrollment and Degree Information Systems

Trends in Retention and Graduation Rates  
**UNIVERSITY OF BALTIMORE**  
 Female Students

Percent enrolled at original campus or graduated from **any** campus after:

Cohort	N	One Year	Two Years	Three Years	Four Years		Five Years		Six Years	
					Enrolled	Graduated	Enrolled	Graduated	Enrolled	Graduated
2007	76	67.1	53.9	52.6	26.3	19.7	6.6	43.4	6.6	51.3
2008	77	75.3	55.8	42.9	27.3	14.3	9.1	31.2		
2009	97	76.3	51.6	43.3	37.1	4.1				
2010	82	78.0	56.1	54.9						
2011	79	75.9	60.8							
2012	120	69.2								

Source: MHEC Enrollment and Degree Information Systems

Trends in Retention and Graduation Rates  
**UNIVERSITY OF MARYLAND BALTIMORE COUNTY**  
 Female Students

Percent enrolled at original campus or graduated from **any** campus after:

Cohort	N	One Year	Two Years	Three Years	Four Years		Five Years		Six Years	
					Enrolled	Graduated	Enrolled	Graduated	Enrolled	Graduated
1991	469	84.0	67.0	53.5	27.3	27.5	6.4	50.6	2.6	59.3
1992	434	81.1	69.4	62.0	30.2	29.3	6.9	56.8	2.8	63.6
1993	417	83.2	71.0	61.9	28.1	28.7	7.4	56.6	2.4	66.2
1994	370	83.0	66.5	60.2	29.5	30.8	8.4	54.9	2.7	63.5
1995	475	84.2	69.7	64.4	24.0	37.3	7.2	56.4	3.4	63.3
1996	505	82.4	69.1	63.2	24.8	34.3	5.1	56.9	2.4	62.7
1997	608	84.4	72.0	64.0	27.0	35.2	7.4	57.1	3.0	65.4
1998	609	83.7	69.8	64.0	28.2	35.7	7.1	59.5	2.5	68.2
1999	638	84.8	75.2	69.2	30.1	35.1	6.9	62.4	2.5	70.0
2000	601	82.9	70.4	66.6	26.1	39.6	6.5	63.7	1.3	71.7
2001	603	84.7	74.6	69.7	25.0	43.0	6.0	63.4	2.2	70.6
2002	573	84.3	71.7	66.3	24.1	42.5	5.8	65.3	1.6	73.8
2003	658	84.3	74.5	70.0	22.8	46.8	5.0	69.3	1.5	76.4
2004	560	84.6	73.2	68.9	25.7	43.2	6.1	69.3	2.5	74.3
2005	584	84.9	71.2	65.8	23.5	42.1	6.0	64.4	3.1	70.2
2006	627	86.6	74.6	71.0	22.2	49.1	4.0	69.5	2.2	75.0
2007	656	88.3	77.4	73.6	25.5	44.4	5.9	69.2	2.0	75.3
2008	650	88.5	75.2	73.2	25.7	47.2	5.2	69.2		
2009	657	87.1	77.9	73.7	25.1	46.0				
2010	605	84.1	75.4	70.7						
2011	601	86.2	75.4							
2012	629	89.2								

Source: MHEC Enrollment and Degree Information Systems

**Trends in Retention and Graduation Rates**  
**UNIVERSITY OF MARYLAND COLLEGE PARK**  
**Female Students**

Percent enrolled at original campus or graduated from **any** campus after:

Cohort	N	One Year	Two Years	Three Years	Four Years		Five Years		Six Years	
					Enrolled	Graduated	Enrolled	Graduated	Enrolled	Graduated
1991	1,436	83.5	74.7	72.1	32.6	34.9	6.9	62.8	1.9	69.0
1992	1,531	85.0	75.2	72.2	32.8	35.0	6.5	62.4	2.4	68.4
1993	1,542	86.6	75.2	72.9	32.0	35.3	6.8	62.2	2.7	68.7
1994	1,773	86.8	75.8	72.7	30.1	37.2	5.8	62.7	1.9	69.1
1995	1,783	87.4	76.1	73.4	27.1	41.1	6.7	63.7	2.7	69.9
1996	1,730	87.4	80.9	77.1	25.5	46.0	5.5	68.1	1.8	73.9
1997	1,877	89.7	80.8	79.6	27.1	47.8	5.4	71.7	2.0	76.6
1998	2,016	90.0	81.2	79.9	27.3	48.5	6.2	71.9	1.8	77.0
1999	1,804	91.6	84.0	82.6	23.1	55.1	4.1	75.8	1.7	80.0
2000	1,903	92.4	85.5	84.7	20.6	58.9	3.1	81.2	1.1	84.3
2001	2,069	92.7	84.3	83.2	17.2	62.7	2.3	80.5	0.8	83.0
2002	1,965	92.6	85.0	84.8	17.0	64.0	2.4	81.4	0.8	84.1
2003	2,036	92.4	84.4	84.9	16.5	65.2	2.7	81.7	1.3	85.2
2004	2,055	93.9	86.8	85.1	15.8	67.3	2.7	83.5	0.9	86.3
2005	2,084	92.3	86.4	85.3	13.7	68.5	1.8	84.5	0.8	85.9
2006	1,897	93.2	86.9	86.7	16.6	66.0	2.6	82.7	0.6	86.0
2007	2,027	94.7	87.8	87.8	14.9	70.1	2.1	85.8	0.6	87.9
2008	1,824	93.6	88.5	86.8	15.5	69.2	2.5	84.8		
2009	1,954	95.6	89.6	87.4	13.9	73.1				
2010	1,856	94.5	88.5	87.3						
2011	1,868	94.6	89.2							
2012	1,832	94.5								

Source: MHEC Enrollment and Degree Information Systems

**Trends in Retention and Graduation Rates**  
**UNIVERSITY OF MARYLAND EASTERN SHORE**  
 Female Students

Percent enrolled at original campus or graduated from **any** campus after:

Cohort	N	One Year	Two Years	Three Years	Four Years		Five Years		Six Years	
					Enrolled	Graduated	Enrolled	Graduated	Enrolled	Graduated
1991	308	72.4	57.1	49.4	20.1	20.1	3.2	38.7	1.3	43.2
1992	243	74.1	51.0	40.7	16.9	18.1	2.9	39.5	2.5	44.5
1993	303	74.9	53.5	45.5	17.5	24.4	3.3	40.6	0.3	44.2
1994	384	71.9	53.4	48.0	17.2	28.1	3.9	46.6	1.8	52.6
1995	488	74.1	56.9	47.4	17.2	29.5	4.7	46.6	1.3	52.2
1996	455	76.3	61.1	49.2	18.2	31.0	2.9	47.5	0.4	53.4
1997	394	75.4	54.6	51.0	16.0	34.8	2.8	49.7	0.5	55.5
1998	385	69.1	55.3	49.9	18.4	29.1	3.4	46.3	1.0	51.2
1999	307	74.3	57.3	54.1	18.6	32.6	4.6	47.9	1.3	52.1
2000	494	67.4	55.5	48.0	19.4	24.7	7.1	39.7	2.2	46.3
2001	741	71.6	58.9	48.7	16.7	28.2	5.1	43.3	1.9	49.3
2002	554	68.4	49.0	44.0	14.1	27.8	2.9	43.9	0.7	48.7
2003	570	67.4	50.6	44.9	18.9	23.3	4.9	37.9	2.5	42.3
2004	558	68.5	50.6	43.5	15.6	24.9	5.4	36.7	2.3	41.9
2005	618	66.3	46.6	41.3	19.3	21.0	5.7	36.2	2.3	41.4
2006	718	63.1	43.5	40.0	20.9	17.0	4.3	34.1	1.8	38.7
2007	559	67.3	49.9	46.5	24.1	19.5	5.0	37.9	1.4	43.8
2008	658	70.7	52.6	49.3	21.9	23.1	7.9	39.9		
2009	525	64.0	49.3	43.8	22.3	17.9				
2010	565	69.4	54.5	47.1						
2011	438	69.9	56.2							
2012	530	67.7								

Source: MHEC Enrollment and Degree Information Systems



**Trends in Retention and Graduation Rates**  
**MORGAN STATE UNIVERSITY**  
 Female Students

Percent enrolled at original campus or graduated from **any** campus after:

Cohort	N	One Year	Two Years	Three Years	Four Years		Five Years		Six Years	
					Enrolled	Graduated	Enrolled	Graduated	Enrolled	Graduated
1991	631	73.5	61.8	55.3	32.6	18.8	12.8	35.6	6.8	41.0
1992	661	75.3	61.0	55.7	31.3	21.8	10.1	40.7	3.6	46.9
1993	653	78.6	64.2	58.9	33.7	20.7	13.2	40.7	5.1	47.1
1994	584	78.4	65.1	56.5	30.7	21.7	11.1	39.7	4.3	46.7
1995	650	78.2	61.7	56.3	26.6	23.9	10.0	39.8	4.3	46.4
1996	603	73.5	63.2	57.6	26.5	24.0	10.1	42.3	4.5	47.6
1997	657	75.5	62.3	56.7	27.1	24.5	9.9	41.9	4.0	49.7
1998	695	74.8	60.9	57.0	31.9	18.7	10.1	39.3	5.0	47.5
1999	666	75.2	66.7	60.8	29.3	25.3	11.1	44.4	5.0	50.7
2000	694	73.1	56.9	52.2	27.2	21.6	11.0	37.3	6.5	44.4
2001	667	69.4	58.0	54.1	30.6	20.5	11.4	38.3	5.7	46.0
2002	743	68.9	55.7	52.6	32.7	15.8	13.1	33.5	5.0	40.8
2003	700	70.0	58.0	51.1	31.1	15.3	13.7	31.6	6.0	39.6
2004	747	69.6	53.6	47.8	30.1	16.7	11.0	32.1	5.2	39.8
2005	396	66.4	53.5	48.2	26.5	17.7	11.9	32.1	5.6	37.3
2006	773	64.3	50.6	47.3	27.3	15.8	11.6	30.1	7.2	35.6
2007	704	68.5	57.5	53.8	34.7	14.6	11.6	33.9	5.7	41.1
2008	808	70.8	56.1	49.5	29.7	15.7	11.4	32.4		
2009	717	68.2	55.5	47.8	31.5	12.7				
2010	680	72.8	59.7	54.3						
2011	601	74.0	59.4							
2012	581	71.1								

Source: MHEC Enrollment and Degree Information Systems

**Trends in Retention and Graduation Rates**  
**ST. MARY'S COLLEGE OF MARYLAND**  
 Female Students

Percent enrolled at original campus or graduated from **any** campus after:

Cohort	N	One Year	Two Years	Three Years	Four Years		Five Years		Six Years	
					Enrolled	Graduated	Enrolled	Graduated	Enrolled	Graduated
1991	132	90.9	82.6	79.6	6.1	74.3	0.0	84.1	0.8	84.8
1992	133	85.7	74.4	73.0	15.0	58.6	0.8	78.2	0.0	79.7
1993	153	93.5	74.5	75.2	8.5	65.4	0.7	76.5	0.7	78.4
1994	184	84.8	68.5	70.6	8.2	63.0	1.1	74.5	0.0	75.6
1995	201	86.6	78.1	75.1	10.4	63.7	2.0	74.6	1.0	75.6
1996	183	88.5	81.4	79.8	4.4	72.1	0.5	82.5	0.5	82.5
1997	196	86.2	80.1	79.1	6.6	76.5	1.5	85.2	0.0	86.2
1998	182	87.9	82.4	81.8	5.5	75.8	0.0	84.0	0.5	86.2
1999	158	81.6	77.2	77.2	9.5	70.3	1.3	79.1	1.3	81.0
2000	220	87.3	84.1	83.7	4.5	79.1	0.9	85.9	0.0	87.3
2001	294	89.1	84.0	83.9	4.1	81.3	0.3	86.0	0.0	86.7
2002	243	85.6	79.0	77.7	3.7	74.1	0.4	81.5	0.0	82.7
2003	250	90.0	85.2	81.2	2.4	82.4	0.8	88.4	0.0	89.6
2004	233	91.0	85.8	83.7	4.3	79.4	0.9	85.0	0.0	86.3
2005	295	84.7	81.4	80.0	6.1	73.2	1.0	79.3	0.0	81.4
2006	249	90.8	84.3	83.5	5.6	79.5	0.4	83.1	0.0	84.3
2007	256	89.8	84.0	82.8	3.9	76.2	0.4	82.4	0.4	83.2
2008	278	90.6	84.9	81.7	4.3	79.1	0.7	89.2		
2009	274	89.4	84.7	83.6	5.8	77.7				
2010	277	86.6	77.3	73.3						
2011	276	87.7	80.4							
2012	265	89.8								

Source: MHEC Enrollment and Degree Information Systems

**RETENTION AND GRADUATION RATES  
OF MARYLAND RESIDENTS**

**STATE-AIDED  
INDEPENDENT INSTITUTIONS**

**Trends in Retention and Graduation Rates of Maryland Residents  
Maryland State-Aided Independent Colleges and Universities**

Percent enrolled at or graduated from original campus after:

	Cohort	N	One Year	Two Years	Three Years	Four Years		Five Years		Six Years	
						Enrolled	Graduated	Enrolled	Graduated	Enrolled	Graduated
Capitol	2007	37	62.2	56.8	43.2	13.5	21.6	2.7	32.4	2.7	43.2
	2008	27	81.5	63.0	66.7	51.9	11.1	25.9	33.3		
	2009	46	69.6	54.3	54.3	34.8	13.0				
	2010	41	68.3	65.9	65.9						
	2011	53	77.4	66.0							
	2012	60	76.7								
Washington Adventist	2007	63	34.9	49.2	49.2	34.9	15.9	20.6	31.7	9.5	34.9
	2008	52	61.5	46.2	34.6	21.2	11.5	13.5	11.5		
	2009	60	71.7	53.3	48.3	40.0	1.7				
	2010	68	30.9	23.5	48.5						
	2011	177	32.8	42.4							
	2012	55	58.2								
Goucher	2007	93	81.7	72.0	67.7	8.6	52.7	1.1	59.1	1.1	60.2
	2008	86	77.9	66.3	62.8	12.8	5.8	4.7	7.0		
	2009	94	78.7	73.4	70.2	10.6	1.1				
	2010	76	81.6	72.4	67.1						
	2011	85	75.3	65.9							
	2012	102	88.2								
Hood	2007	211	80.1	70.6	68.7	10.9	55.9	1.4	69.7	0.5	74.9
	2008	214	80.8	68.7	67.3	14.5	56.1	2.8	73.4		
	2009	187	75.9	67.4	63.6	9.6	59.9				
	2010	228	77.2	69.7	67.1						
	2011	205	78.5	67.3							
	2012	165	75.8								
Johns Hopkins	2007	165	81.2	75.2	75.2	5.5	69.7	1.8	75.2	0.6	77.0
	2008	165	96.4	89.7	90.9	4.2	80.6	1.8	83.6		
	2009	144	93.8	89.6	89.6	6.9	80.6				
	2010	139	95.0	85.6	87.1						
	2011	116	95.7	85.3							
	2012	130	93.8								
Loyola	2007	173	89.6	82.7	80.3	7.5	71.7	0.0	82.1	0.6	83.8
	2008	184	88.0	83.2	82.1	5.4	13.6	4.3	21.7		
	2009	150	86.7	84.0	82.7	5.3	77.3				
	2010	170	87.6	82.9	81.2						
	2011	146	84.2	78.1							
	2012	175	86.3								
MD Inst Coll of Art	2007	76	85.5	72.4	65.8	7.9	52.6	1.3	68.4	0.0	72.4
	2008	66	89.4	84.8	77.3	6.1	56.1	0.0	72.7		
	2009	75	92.0	84.0	82.7	6.7	69.3				
	2010	99	84.8	78.8	80.8						
	2011	88	83.0	75.0							
	2012	83	84.3								
McDaniel	2007	272	86.4	78.3	77.6	7.4	66.2	0.0	80.5	0.0	82.7
	2008	237	78.9	64.6	66.7	6.3	59.5	1.7	72.2		
	2009	253	84.6	76.7	75.1	8.7	64.8				
	2010	369	51.5	70.2	70.7						
	2011	364	81.3	75.8							
	2012	427	84.3								
Mt. St. Mary's	2007	231	80.5	71.0	64.9	3.9	61.0	0.9	76.6	0.4	78.8
	2008	222	74.3	63.5	62.2	6.8	58.6	0.5	71.2		
	2009	254	77.2	68.9	65.0	2.8	64.2				
	2010	201	83.6	74.6	71.6						
	2011	305	75.4	62.6							
	2012	223	80.7								
Coll Notre Dame MD	2007	84	76.2	64.3	56.0	9.5	46.4	2.4	57.1	1.2	65.5
	2008	85	78.8	64.7	57.6	4.7	50.6	2.4	65.9		
	2009	87	75.9	63.2	54.0	6.9	41.4				
	2010	95	69.5	55.8	50.5						
	2011	108	69.4	50.9							
	2012	108	69.4								
St. Johns	2007	28	71.4	46.4	46.4	7.1	39.3	0.0	46.4	0.0	50.0
	2008	16	93.8	75.0	81.2	6.3	81.3	0.0	87.5		
	2009	14	-	-	-	-	-				
	2010	23	82.6	73.9	78.3						
	2011	16	87.5	68.8							
	2012	22	63.6								
Sojourner-Douglas	2007	99	45.5	25.3	16.2	12.1	7.1	6.1	7.1	2.0	10.1
	2008	67	52.2	46.3	29.9	7.5	17.9	1.5	19.4		
	2009	104	54.8	35.6	26.9	15.4	14.4				
	2010	120	43.3	33.3	20.0						
	2011	90	38.9	27.8							
	2012	87	42.5								
Stevenson (formerly Villa Julie)	2007	549	74.5	65.8	61.7	14.9	43.0	3.6	58.8	0.0	66.1
	2008	561	78.6	67.7	65.1	12.8	53.1	2.7	65.2		
	2009	440	75.9	63.9	60.0	12.3	44.8				
	2010	743	73.9	59.9	56.5						
	2011	652	71.6	63.8							
	2012	618	76.1								
Washington	2007	173	83.2	75.1	73.4	4.6	65.9	0.6	74.6	0.6	76.9
	2008	192	82.8	75.5	70.3	1.6	71.9	1.6	76.6		
	2009	187	84.5	78.1	73.3	4.3	72.7				
	2010	225	81.8	74.7	70.7						
	2011	194	86.6	78.4							
	2012	160	81.3								
All State-Aided Independents	2007	2,254	77.5	68.5	64.3	10.1	54.9	2.4	65.1	0.7	69.3
	2008	2,174	80.2	69.8	66.4	9.3	50.8	2.8	61.1		
	2009	2,095	79.3	69.9	66.6	9.7	53.8				
	2010	2,597	72.4	66.5	64.6						
	2011	2,599	73.7	65.8							
	2012	2,415	78.8								

\* N less than 15

\*\* Baltimore International College closed effective January 2012, and is therefore removed from this analysis

Source: MHEC Enrollment and Degree Information Systems

Trends in Retention and Graduation Rates of Maryland Residents  
**Maryland State-Aided Independent Colleges and Universities**  
 Female Students

Percent enrolled at or graduated from original campus after:

	Cohort	N	One Year	Two Years	Three Years	Four Years		Five Years		Six Years	
						Enrolled	Graduated	Enrolled	Graduated	Enrolled	Graduated
Capitol	2007	10	*	*	*	*	*	*	*	*	*
	2008	8	*	*	*	*	*	*	*	*	*
	2009	14	*	*	*	*	*	*	*	*	*
	2010	9	*	*	*	*	*	*	*	*	*
	2011	16	68.8	56.3							
2012	12	*									
Washington Adventist	2007	41	29.6	53.7	56.1	34.1	22.0	22.0	34.1	9.8	36.6
	2008	35	54.3	42.9	31.4	20.0	5.7	17.1	5.7		
	2009	37	75.7	64.9	56.8	43.2	2.7				
	2010	50	36.0	28.0	58.0						
	2011	116	32.8	42.2							
2012	35	62.9									
Goucher	2007	56	78.6	67.9	67.9	5.4	58.9	0.0	66.1	0.0	67.9
	2008	49	71.4	63.3	61.2	14.3	10.2	6.1	12.2		
	2009	58	84.5	74.1	70.7	8.6	1.7				
	2010	49	83.7	75.5	69.4						
	2011	47	72.3	66.0							
2012	74	86.5									
Hood	2007	146	82.2	73.3	70.5	6.8	61.6	1.4	71.9	0.0	78.1
	2008	141	81.6	68.8	68.1	14.2	58.9	2.1	75.9		
	2009	128	76.6	69.5	66.4	9.4	61.7				
	2010	143	81.8	74.8	69.2						
	2011	146	80.8	70.5							
2012	101	78.2									
Johns Hopkins	2007	90	84.4	76.7	77.8	3.3	74.4	1.1	80.0	1.1	81.1
	2008	73	98.6	90.4	93.2	1.4	87.7	0.0	90.4		
	2009	73	98.6	91.8	93.2	6.8	83.6				
	2010	72	94.4	79.2	88.9						
	2011	59	96.6	79.7							
2012	67	92.5									
Loyola	2007	92	89.1	85.9	84.8	2.2	82.6	0.0	88.0	0.0	89.1
	2008	107	88.8	86.0	84.1	3.7	15.0	2.8	22.4		
	2009	75	90.7	86.7	86.7	4.0	81.3				
	2010	106	86.8	81.1	81.1						
	2011	79	81.0	75.9							
2012	99	85.9									
MD Inst Coll of Art	2007	53	86.8	73.6	67.9	7.5	56.6	1.9	71.7	0.0	77.4
	2008	47	87.2	78.7	72.3	6.4	53.2	0.0	74.5		
	2009	48	91.7	83.3	81.3	8.3	70.8				
	2010	69	85.5	81.2	81.2						
	2011	56	85.7	80.4							
2012	59	81.4									
McDaniel	2007	147	89.1	81.6	77.6	4.1	74.8	0.0	84.4	0.0	86.4
	2008	127	80.3	61.4	63.0	3.9	66.1	0.0	77.2		
	2009	126	85.7	78.6	79.4	4.8	73.0				
	2010	196	55.1	77.6	62.4						
	2011	191	85.3	81.2							
2012	232	84.5									
Mt. St. Mary's	2007	138	84.8	74.6	67.4	4.3	63.0	0.7	81.2	0.7	84.8
	2008	116	74.1	62.1	61.2	5.2	59.5	0.0	71.6		
	2009	153	78.4	69.9	64.7	2.0	66.7				
	2010	119	85.7	80.7	75.6						
	2011	175	76.0	64.0							
2012	123	84.6									
Coll Notre Dame MD	2007	84	76.2	64.3	56.0	9.5	46.4	2.4	57.1	1.2	65.5
	2008	85	78.8	64.7	57.6	4.7	50.6	2.4	65.9		
	2009	87	75.9	63.2	54.0	6.9	41.4				
	2010	95	69.5	55.8	50.5						
	2011	108	69.4	50.9							
2012	108	69.4									
St. Johns	2007	11	*	*	*	*	*	*	*	*	*
	2008	6	*	*	*	*	*	*	*	*	*
	2009	9	*	*	*	*	*	*	*	*	*
	2010	5	*	*	*	*	*	*	*	*	*
	2011	9	*	*	*	*	*	*	*	*	*
2012	7	*									
Sojourner-Douglas	2007	92	45.7	26.1	17.4	13.0	7.6	6.5	7.6	2.2	10.9
	2008	59	54.2	45.8	28.8	8.5	16.9	1.7	18.6		
	2009	89	52.8	33.7	24.7	16.9	12.4				
	2010	104	42.3	33.7	19.2						
	2011	78	39.7	28.2							
2012	74	41.9									
Stevenson (formerly Villa Julie)	2007	404	75.2	64.6	61.6	14.1	44.8	3.2	60.9	0.0	68.3
	2008	403	79.9	69.2	66.3	12.2	54.8	2.7	66.3		
	2009	309	77.7	66.0	62.1	12.3	47.9				
	2010	472	76.1	64.4	60.6						
	2011	403	74.9	67.0							
2012	398	78.9									
Washington	2007	115	85.2	79.1	75.7	1.7	72.2	0.9	80.0	0.9	81.7
	2008	133	84.2	75.9	70.7	0.8	74.4	0.8	79.7		
	2009	108	84.3	79.6	74.1	3.7	77.8				
	2010	136	85.3	80.9	75.7						
	2011	115	87.8	79.1							
2012	96	82.3									
All State-Aided Independents	2007	1,479	77.8	68.9	64.4	8.7	57.6	2.5	66.7	0.7	71.2
	2008	1,389	80.0	68.9	65.0	8.2	52.4	2.2	62.6		
	2009	1,314	79.8	70.0	66.4	9.2	54.7				
	2010	1,625	74.0	68.7	66.4						
	2011	1,598	74.1	66.0							
2012	1,485	79.0									

\* N less than 15

\*\* Baltimore International College closed effective January 2012, and is therefore removed from this analysis

Source: MHEC Enrollment and Degree Information Systems

**Trends in Retention and Graduation Rates of Maryland Residents  
Maryland State-Aided Independent Colleges and Universities  
Male Students**

Percent enrolled at or graduated from original campus after:

	Cohort	N	One Year	Two Years	Three Years	Four Years		Five Years		Six Years	
						Enrolled	Graduated	Enrolled	Graduated	Enrolled	Graduated
Capitol	2007	27	59.3	51.9	40.7	14.8	22.2	0.0	29.6	0.0	40.7
	2008	19	73.7	73.7	68.4	63.2	5.3	31.6	31.6		
	2009	32	71.9	53.1	56.3	37.5	15.6				
	2010	32	65.6	65.6	65.6						
	2011	37	81.1	70.3							
	2012	48	77.1								
Washington Adventist	2007	22	45.5	40.9	36.4	36.4	4.5	18.2	27.3	9.1	31.8
	2008	17	76.5	74.6	41.2	23.5	23.5	5.9	23.5		
	2009	23	65.2	34.8	34.8	34.8	0.0				
	2010	18	16.7	11.1	22.2						
	2011	61	32.8	42.6							
	2012	20	50.0								
Goucher	2007	37	86.5	78.4	67.6	13.5	43.2	2.7	48.6	2.7	48.6
	2008	37	86.5	70.3	64.9	10.8	0.0	2.7	0.0		
	2009	36	69.4	72.2	69.4	13.9	0.0				
	2010	27	77.8	66.7	63.0						
	2011	38	78.9	65.8							
	2012	28	92.9								
Hood	2007	65	75.4	64.6	64.6	20.0	43.1	1.5	64.6	1.5	67.7
	2008	73	79.5	68.5	65.8	15.1	50.7	4.1	68.5		
	2009	59	74.6	62.7	57.6	10.2	55.9				
	2010	85	69.4	61.2	63.5						
	2011	59	72.9	59.3							
	2012	64	71.9								
Johns Hopkins	2007	75	77.3	73.3	72.0	8.0	64.0	2.7	69.3	0.0	72.0
	2008	92	94.6	89.1	89.1	6.5	75.0	3.3	78.3		
	2009	71	88.7	87.3	85.9	7.0	77.5				
	2010	67	95.5	92.5	85.1						
	2011	57	94.7	91.2							
	2012	63	95.2								
Loyola	2007	81	90.1	79.0	75.3	13.6	59.3	0.0	75.3	1.2	77.8
	2008	77	87.0	79.2	79.2	7.8	11.7	6.5	20.8		
	2009	75	82.7	81.3	78.7	6.7	73.3				
	2010	64	89.1	85.9	81.3						
	2011	67	88.1	80.6							
	2012	76	86.8								
MD Inst Coll of Art	2007	23	82.6	69.6	60.9	8.7	47.8	0.0	60.9	0.0	60.9
	2008	19	94.7	100.0	89.5	5.3	63.2	0.0	68.4		
	2009	27	92.6	85.2	85.2	3.7	66.7				
	2010	30	83.3	73.3	80.0						
	2011	32	78.1	65.6							
	2012	24	91.7								
McDaniel	2007	125	83.2	74.4	77.6	11.2	56.0	0.0	76.0	0.0	78.4
	2008	110	77.3	68.2	70.9	9.1	51.8	3.6	66.4		
	2009	127	83.5	74.8	70.9	12.6	56.7				
	2010	173	47.4	61.8	62.4						
	2011	173	76.9	69.9							
	2012	195	84.1								
Mt. St. Mary's	2007	93	74.2	65.6	61.3	3.2	58.1	1.1	69.9	0.0	69.9
	2008	106	74.5	65.1	63.2	8.5	57.5	0.9	70.8		
	2009	101	75.2	67.3	65.3	4.0	60.4				
	2010	82	80.5	65.9	65.9						
	2011	130	74.6	60.8							
	2012	100	76.0								
Coll Notre Dame MD	2007	0	*	*	*	*	*	*	*	*	*
	2008	0	*	*	*	*	*	*	*	*	*
	2009	0	*	*	*	*	*	*	*	*	*
	2010	0	*	*	*	*	*	*	*	*	*
	2011	0	*	*	*	*	*	*	*	*	*
	2012	0	*	*	*	*	*	*	*	*	*
St. Johns	2007	17	76.5	41.2	35.3	5.9	35.3	0.0	41.2	0.0	47.1
	2008	10	*	*	*	*	*	*	*	*	*
	2009	5	*	*	*	*	*	*	*	*	*
	2010	18	77.8	72.2	72.2						
	2011	7	*	*	*	*	*	*	*	*	*
	2012	15	60.0								
Sojourner-Douglas	2007	7	*	*	*	*	*	*	*	*	*
	2008	8	*	*	*	*	*	*	*	*	*
	2009	15	66.7	46.7	40.0	6.7	26.7				
	2010	16	50.0	31.3	25.0						
	2011	12	*	*	*	*	*	*	*	*	*
	2012	13	*	*	*	*	*	*	*	*	*
Stevenson (formerly Villa Julie)	2007	145	72.4	66.2	62.1	17.2	37.9	4.8	53.1	0.0	60.0
	2008	158	75.3	63.9	62.0	14.6	48.7	2.5	62.7		
	2009	131	71.8	58.8	55.0	12.2	37.4				
	2010	271	70.1	52.0	49.4						
	2011	249	68.3	58.6							
	2012	220	71.4								
Washington	2007	58	79.3	67.2	69.0	10.3	53.4	0.0	63.8	0.0	67.2
	2008	59	79.7	74.6	69.5	3.4	66.1	3.4	69.5		
	2009	79	84.8	75.9	72.2	5.1	65.8				
	2010	89	76.4	65.2	62.9						
	2011	79	84.8	77.2							
	2012	64	79.7								
All State-Aided Independents	2007	775	77.0	67.9	64.3	12.6	49.7	2.1	62.2	0.6	65.5
	2008	785	80.5	71.5	68.9	11.3	47.9	3.8	58.6		
	2009	781	78.6	69.8	67.0	10.6	52.2				
	2010	972	69.8	62.8	61.5						
	2011	1,001	73.1	65.3							
	2012	930	78.5								

\* N less than 15

\*\* Baltimore International College closed effective January 2012, and is therefore removed from this analysis

Source: MHEC Enrollment and Degree Information Systems

**Trends in Retention and Graduation Rates of Maryland Residents  
Maryland State-Aided Independent Colleges and Universities  
African American Students**

Percent enrolled at or graduated from original campus after:

	Cohort	N	One Year	Two Years	Three Years	Four Years		Five Years		Six Years	
						Enrolled	Graduated	Enrolled	Graduated	Enrolled	Graduated
Capitol	2007	22	63.6	54.5	40.9	18.2	9.1	4.5	22.7	4.5	40.9
	2008	12	*	*	*	*	*	*	*	*	*
	2009	29	65.5	48.3	48.3	41.4	0.0				
	2010	21	66.7	61.9	61.9						
	2011	23	60.9	52.2							
	2012	27	70.4								
Washington Adventist	2007	26	26.9	50.0	46.2	38.5	3.8	19.2	23.1	11.5	26.9
	2008	26	61.5	50.0	42.3	26.9	11.5	15.4	11.5		
	2009	36	77.8	55.6	52.8	41.7	0.0				
	2010	25	28.0	16.0	36.0						
	2011	110	30.0	44.5							
	2012	24	79.2								
Goucher	2007	18	77.8	66.7	66.7	16.7	33.3	5.6	38.9	5.6	38.9
	2008	22	86.4	63.6	63.6	13.6	0.0	0.0	4.5		
	2009	18	83.3	83.3	77.8	16.7	0.0				
	2010	19	73.7	57.9	47.4						
	2011	28	71.4	57.1							
	2012	24	91.7								
Hood	2007	25	84.0	80.0	72.0	20.0	48.0	12.0	64.0	4.0	76.0
	2008	33	90.9	57.6	60.6	12.1	54.5	0.0	72.7		
	2009	25	60.0	56.0	56.0	12.0	48.0				
	2010	36	75.0	61.1	52.8						
	2011	47	72.3	55.3							
	2012	26	65.4								
Johns Hopkins	2007	27	92.6	92.6	81.5	3.7	81.5	0.0	88.9	0.0	88.9
	2008	23	95.7	91.3	87.0	4.3	78.3	4.3	78.3		
	2009	18	100.0	100.0	100.0	11.1	83.3				
	2010	19	100.0	89.5	84.2						
	2011	14	*	*	*						
	2012	25	84.0								
Loyola	2007	23	82.6	73.9	73.9	13.0	60.9	0.0	73.9	0.0	78.3
	2008	23	91.3	91.3	91.3	13.0	21.7	4.3	30.4		
	2009	17	88.2	76.5	70.6	5.9	58.8				
	2010	19	78.9	63.2	63.2						
	2011	24	79.2	75.0							
	2012	32	84.4								
MD Inst Coll of Art	2007	8	*	*	*	*	*	*	*	*	*
	2008	10	*	*	*	*	*	*	*	*	*
	2009	6	*	*	*	*	*	*	*	*	*
	2010	8	*	*	*	*	*	*	*	*	*
	2011	14	*	*	*	*	*	*	*	*	*
	2012	15	93.3								
McDaniel	2007	15	80.0	73.3	66.7	13.3	53.3	0.0	93.3	0.0	93.3
	2008	22	63.6	50.0	50.0	9.1	50.0	0.0	63.6		
	2009	35	88.6	80.0	82.9	11.4	54.3				
	2010	40	62.5	75.0	72.5						
	2011	72	86.1	80.6							
	2012	62	88.7								
Mt. St. Mary's	2007	15	86.7	80.0	73.3	6.7	60.0	0.0	73.3	0.0	73.3
	2008	27	59.3	51.9	51.9	11.1	40.7	0.0	59.3		
	2009	40	82.5	70.0	67.5	5.0	57.5				
	2010	26	80.8	65.4	65.4						
	2011	72	66.7	45.8							
	2012	41	70.7								
Coll Notre Dame MD	2007	22	68.2	54.5	50.0	4.5	36.4	0.0	40.9	0.0	54.9
	2008	32	78.1	65.6	65.6	9.4	40.6	0.0	62.5		
	2009	30	66.7	50.0	43.3	10.0	20.0				
	2010	35	74.3	57.1	48.6						
	2011	40	60.0	37.5							
	2012	50	64.0								
St. Johns	2007	1	*	*	*	*	*	*	*	*	*
	2008	0	*	*	*	*	*	*	*	*	*
	2009	0	*	*	*	*	*	*	*	*	*
	2010	0	*	*	*	*	*	*	*	*	*
	2011	0	*	*	*	*	*	*	*	*	*
	2012	0	*	*	*	*	*	*	*	*	*
Sojourner-Douglas	2007	97	44.3	24.7	14.4	11.3	6.2	6.2	6.2	2.1	9.3
	2008	65	52.3	46.2	29.2	7.7	16.9	1.5	18.5		
	2009	101	53.5	34.7	27.7	15.8	14.9				
	2010	116	44.0	33.6	20.7						
	2011	86	39.5	25.6							
	2012	84	42.9								
Stevenson (formerly Villa Julie)	2007	99	73.7	58.6	55.6	23.2	28.3	6.1	51.5	0.0	59.6
	2008	87	75.9	58.6	54.0	20.7	32.2	6.9	48.3		
	2009	110	74.5	55.5	54.5	15.5	33.6				
	2010	260	70.8	53.5	48.1						
	2011	230	69.1	62.2							
	2012	190	72.6								
Washington	2007	14	*	*	*	*	*	*	*	*	*
	2008	17	82.4	76.5	76.5	0.0	70.6	0.0	82.4		
	2009	11	*	*	*	*	*	*	*	*	*
	2010	14	*	*	*	*	*	*	*	*	*
	2011	8	*	*	*	*	*	*	*	*	*
	2012	13	*	*	*	*	*	*	*	*	*
All State-Aided Independents	2007	412	66.7	56.3	48.5	15.5	32.2	5.3	43.4	2.2	49.0
	2008	399	74.7	61.9	56.4	14.8	33.8	4.3	45.9		
	2009	476	72.3	56.5	54.4	16.6	30.5				
	2010	638	65.5	52.8	47.6						
	2011	768	62.1	54.3							
	2012	631	71.3								

\* N less than 15

\*\* Baltimore International College closed effective January 2012, and is therefore removed from this analysis

\*\*\* New federal race and ethnicity definitions were introduced in 2010. Figures before and after 2010 may not be directly comparable

Source: MHEG Enrollment and Degree Information Systems

Trends in Retention and Graduation Rates of Maryland Residents  
**Maryland State-Aided Independent Colleges and Universities**  
 White Students

Percent enrolled at or graduated from original campus after:

	Cohort	N	One Year		Two Years		Three Years		Four Years		Five Years		Six Years	
			Enrolled	Graduated	Enrolled	Graduated	Enrolled	Graduated	Enrolled	Graduated	Enrolled	Graduated		
Capitol	2007	9	*	*	*	*	*	*	*	*	*	*	*	*
	2008	9	*	*	*	*	*	*	*	*	*	*	*	*
	2009	10	*	*	*	*	*	*	*	*	*	*	*	*
	2010	12	*	*	*	*	*	*	*	*	*	*	*	*
	2011	13	*	*	*	*	*	*	*	*	*	*	*	*
	2012	19	94.7											
Washington Adventist	2007	7	*	*	*	*	*	*	*	*	*	*	*	*
	2008	5	*	*	*	*	*	*	*	*	*	*	*	*
	2009	4	*	*	*	*	*	*	*	*	*	*	*	*
	2010	8	*	*	*	*	*	*	*	*	*	*	*	*
	2011	20	20.0	44.5										
	2012	4	*											
Goucher	2007	59	83.1	71.2	66.1	6.8	57.6	0.0	66.1	0.0	67.8			
	2008	48	79.2	68.8	64.6	16.7	6.3	8.3	6.3					
	2009	53	77.4	71.7	66.0	11.3	0.0							
	2010	45	82.2	75.6	71.1									
	2011	42	76.6	71.4										
	2012	50	84.0											
Hood	2007	155	79.4	68.4	68.4	9.0	57.4	0.0	71.0	0.0	75.5			
	2008	150	81.3	75.3	71.3	16.0	58.0	2.7	76.0					
	2009	125	80.8	70.4	66.4	4.8	66.4							
	2010	152	77.6	71.7	69.7									
	2011	124	84.7	75.8										
	2012	102	77.5											
Johns Hopkins	2007	82	81.7	70.7	75.6	4.9	70.7	1.2	76.8	1.2	78.0			
	2008	75	94.7	89.3	90.7	4.0	81.3	2.7	85.3					
	2009	58	91.4	82.8	84.5	12.1	69.0							
	2010	67	95.5	83.6	88.1									
	2011	56	94.6	85.7										
	2012	62	95.2											
Loyola	2007	125	91.2	85.6	83.2	8.0	73.6	0.0	84.0	0.8	85.6			
	2008	135	85.9	80.0	80.0	3.7	12.6	4.4	20.0					
	2009	104	86.5	84.6	84.6	4.8	80.8							
	2010	125	90.4	87.2	86.4									
	2011	96	86.5	79.2										
	2012	108	84.3											
MD Inst Coll of Art	2007	53	88.7	77.4	69.8	5.7	58.5	0.0	75.5	0.0	77.4			
	2008	40	85.0	82.5	75.0	5.0	60.0	0.0	72.5					
	2009	42	90.5	88.1	85.7	9.5	76.2							
	2010	51	80.4	76.5	76.5									
	2011	51	84.3	78.4										
	2012	47	80.9											
McDaniel	2007	214	88.3	80.4	80.4	6.1	70.6	0.0	82.7	0.0	85.0			
	2008	166	83.7	69.9	71.7	5.4	63.3	1.8	74.7					
	2009	195	84.6	77.9	76.4	7.7	69.7							
	2010	286	47.6	68.9	70.3									
	2011	264	79.9	75.0										
	2012	308	83.8											
Mt. St. Mary's	2007	181	80.1	71.3	65.7	3.3	62.4	1.1	79.0	0.0	81.2			
	2008	171	77.2	66.1	64.3	6.4	61.4	0.6	73.1					
	2009	175	78.3	72.6	68.6	1.7	70.9							
	2010	132	85.6	80.3	75.8									
	2011	178	79.8	71.9										
	2012	141	83.7											
Coll Notre Dame MD	2007	56	82.1	67.9	58.9	8.9	53.6	3.6	64.3	1.8	71.4			
	2008	43	79.1	65.1	53.5	2.3	60.5	4.7	72.1					
	2009	53	79.2	67.9	56.6	5.7	50.9							
	2010	34	64.7	55.9	50.0									
	2011	50	72.0	64.0										
	2012	38	76.3											
St. Johns	2007	26	69.2	42.3	42.3	7.7	34.6	0.0	42.3	0.0	46.2			
	2008	16	93.8	75.0	81.2	6.3	81.3	0.0	87.5					
	2009	13	*	*	*	*	*							
	2010	20	80.0	70.0	75.0									
	2011	12	*	*	*	*	*							
	2012	18	72.2											
Sojourner-Douglas	2007	1	*	*	*	*	*	*	*	*	*	*	*	*
	2008	1	*	*	*	*	*	*	*	*	*	*	*	*
	2009	2	*	*	*	*	*	*	*	*	*	*	*	*
	2010	2	*	*	*	*	*	*	*	*	*	*	*	*
	2011	3	*	*	*	*	*	*	*	*	*	*	*	*
	2012	0	*											
Stevenson (formerly Villa Julie)	2007	397	76.3	66.8	64.2	12.8	48.1	3.0	63.2	0.0	69.5			
	2008	415	81.4	71.8	69.6	11.1	61.0	2.2	70.8					
	2009	275	76.7	66.9	62.9	11.3	50.2							
	2010	388	79.4	67.0	64.2									
	2011	353	73.7	66.0										
	2012	329	79.9											
Washington	2007	149	83.9	76.5	75.2	5.4	67.8	0.7	77.9	0.7	80.5			
	2008	163	82.8	75.5	69.9	1.8	74.2	1.8	77.9					
	2009	162	85.2	79.0	74.7	3.1	74.7							
	2010	189	83.1	77.2	73.5									
	2011	166	88.6	81.3										
	2012	126	83.3											
All State-Aided Independents	2007	1,514	81.6	72.1	69.2	8.0	62.3	1.3	72.6	0.3	76.3			
	2008	1,437	82.5	73.3	70.3	8.2	56.9	2.6	66.4					
	2009	1,271	82.1	74.5	71.0	6.9	63.1							
	2010	1,511	75.1	72.7	71.2									
	2011	1,428	79.8	72.9										
	2012	1,352	82.5											

\* N less than 15

\*\* Baltimore International College closed effective January 2012, and is therefore removed from this analysis

\*\*\* New federal race and ethnicity definitions were introduced in 2010. Figures before and after 2010 may not be directly comparable

Source: MHEC Enrollment and Degree Information Systems